

# Project 1

Partner for Contact:  
Order No.:  
Company:  
Customer No.:

Date: 22.01.2025  
Operator:



Operator  
Telephone  
Fax  
e-Mail

## Table of contents

### Project 1

Project Cover	1
Table of contents	2
Luminaire parts list	3
<b>Exterior Scene 1</b>	
Planning data	4
Luminaires (layout plan)	5
Luminaires (coordinates list)	6
Sport Sites (layout plan)	8
Sport Luminaires (Coordinates List)	9
3D Rendering	11
False Color Rendering	12
<b>Exterior Surfaces</b>	
<b>Soccer Field 1 Calculation Grid (PA)</b>	
Summary	13
Isolines (E, Perpendicular)	14
Greyscale (E, Perpendicular)	15
Value Chart (E, Perpendicular)	16

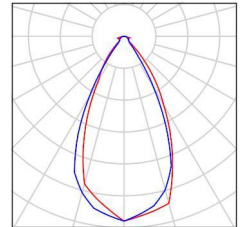


Operator  
Telephone  
Fax  
e-Mail

### Project 1 / Luminaire parts list

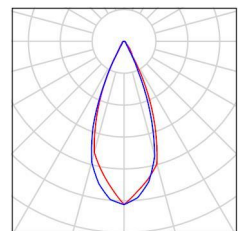
24 Pieces MIC OPTOELECTRONIC CO.,LTD MFL-R1000-3 LED FLOODLIGHT 1000W  
Article No.: MFL-R1000-3  
Luminous flux (Luminaire): 140647 lm  
Luminous flux (Lamps): 150690 lm  
Luminaire Wattage: 990.8 W  
Luminaire classification according to CIE: 100  
CIE flux code: 87 93 99 100 94  
Fitting: 1 x 5050 (Correction Factor 1.000).

See our luminaire catalog for an image of the luminaire.



16 Pieces MIC OPTOELECTRONIC CO.,LTD MFL-R1000-3 LED FLOODLIGHT 1000W  
Article No.: MFL-R1000-3  
Luminous flux (Luminaire): 153180 lm  
Luminous flux (Lamps): 159520 lm  
Luminaire Wattage: 999.3 W  
Luminaire classification according to CIE: 100  
CIE flux code: 92 97 99 100 96  
Fitting: 1 x 5050 (Correction Factor 1.000).

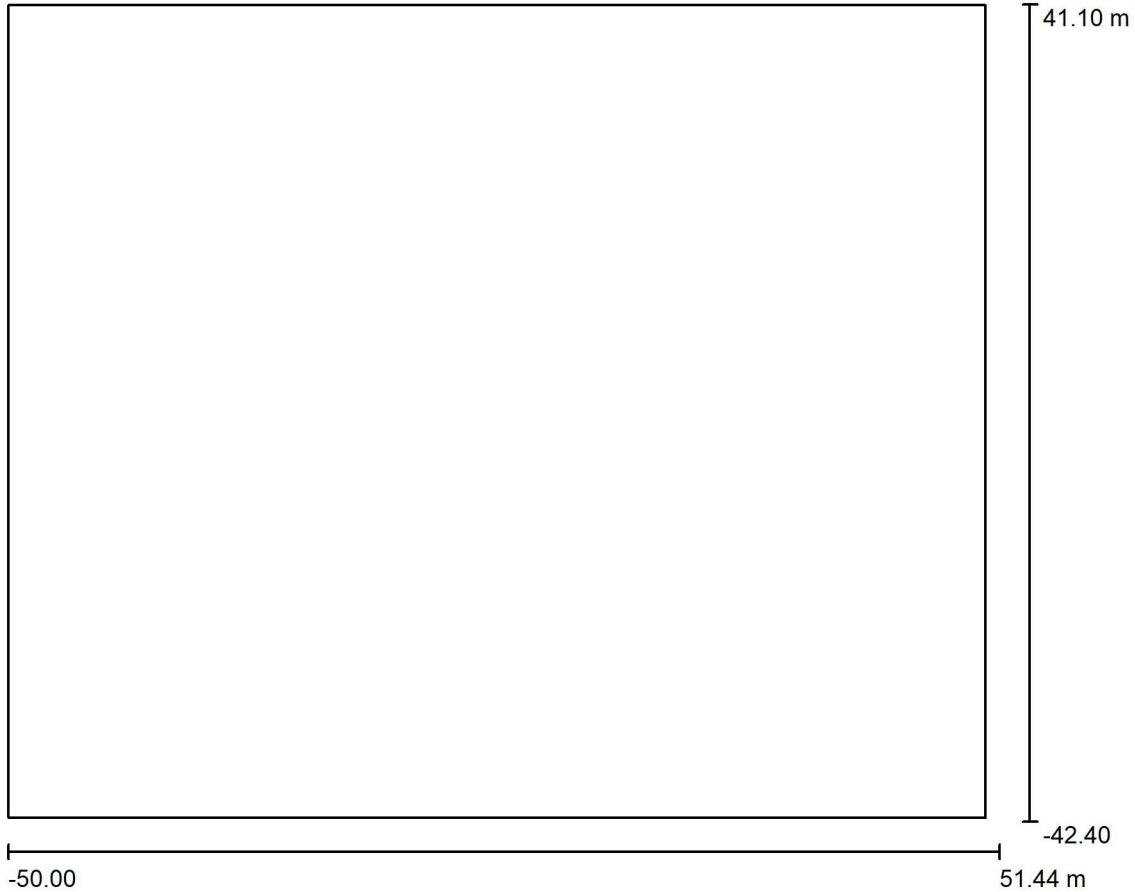
See our luminaire catalog for an image of the luminaire.





Operator  
 Telephone  
 Fax  
 e-Mail

**Exterior Scene 1 / Planning data**



Light loss factor: 0.80, ULR (Upward Light Ratio): 10.0%

Scale 1:774

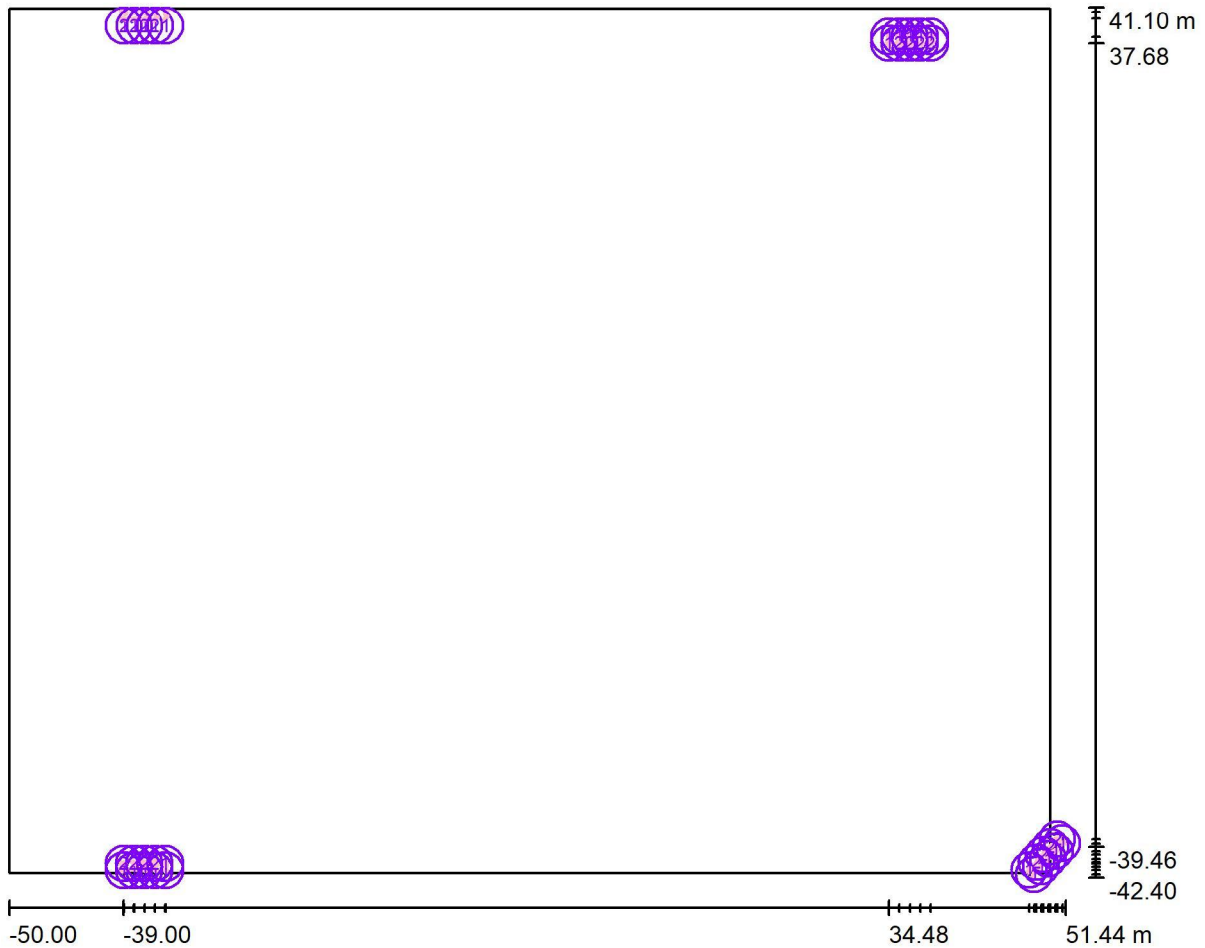
**Luminaire Parts List**

No.	Pieces	Designation (Correction Factor)	Φ (Luminaire) [lm]	Φ (Lamps) [lm]	P [W]
1	24	MIC OPTOELECTRONIC CO.,LTD MFL-R1000-3 LED FLOODLIGHT 1000W (1.000)	140647	150690	990.8
2	16	MIC OPTOELECTRONIC CO.,LTD MFL-R1000-3 LED FLOODLIGHT 1000W (1.000)	153180	159520	999.3
Total:			5826417	6168880	39767.2



Operator  
Telephone  
Fax  
e-Mail

## Exterior Scene 1 / Luminaires (layout plan)



Scale 1 : 726

### Luminaire Parts List

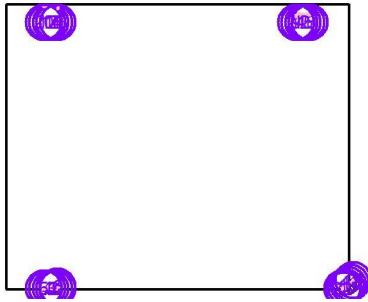
No.	Pieces	Designation
1	24	MIC OPTOELECTRONIC CO.,LTD MFL-R1000-3 LED FLOODLIGHT 1000W
2	16	MIC OPTOELECTRONIC CO.,LTD MFL-R1000-3 LED FLOODLIGHT 1000W



Operator  
 Telephone  
 Fax  
 e-Mail

**Exterior Scene 1 / Luminaires (coordinates list)**

**MIC OPTOELECTRONIC CO.,LTD MFL-R1000-3 LED FLOODLIGHT 1000W**  
 140647 lm, 990.8 W, 1 x 1 x 5050 (Correction Factor 1.000).



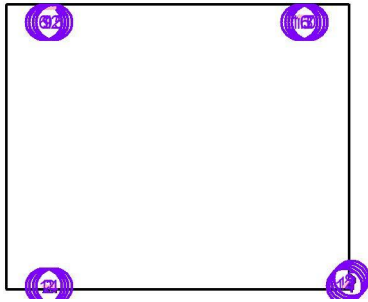
No.	Position [m]			Rotation [°]		
	X	Y	Z	X	Y	Z
1	-35.000	-41.687	16.000	56.6	0.0	-59.4
2	-36.000	-41.687	16.000	69.2	0.0	-48.0
3	-37.000	-41.687	16.000	55.8	0.0	-12.3
4	-38.000	-41.687	16.000	68.9	0.0	-1.1
5	-39.000	-41.687	16.000	52.8	0.0	31.5
6	-35.000	-41.062	17.000	64.3	0.0	-74.6
7	48.421	-42.095	16.000	71.6	0.0	77.9
8	-34.979	40.702	16.000	64.8	0.0	-105.8
9	34.479	38.302	16.000	64.8	0.0	100.6
10	49.096	-41.357	16.000	73.3	0.0	64.6
11	-35.979	40.702	16.000	68.7	0.0	-124.2
12	35.479	38.302	16.000	68.7	0.0	124.4
13	49.772	-40.620	16.000	58.1	0.0	45.3
14	-36.979	40.702	16.000	53.0	0.0	-166.6
15	36.479	38.302	16.000	52.9	0.0	158.3
16	50.447	-39.882	16.000	67.3	0.0	26.0
17	-37.979	40.702	16.000	67.5	0.0	-178.4
18	37.479	38.302	16.000	68.6	0.0	-178.9
19	51.123	-39.145	16.000	59.5	0.0	19.2
20	-38.979	40.702	16.000	49.1	0.0	143.4
21	38.479	38.302	16.000	45.3	0.0	-136.1
22	47.960	-41.672	17.000	71.4	0.0	71.8
23	-34.979	40.077	17.000	64.2	0.0	-112.4
24	34.479	37.677	17.000	64.4	0.0	111.6



Operator  
 Telephone  
 Fax  
 e-Mail

**Exterior Scene 1 / Luminaires (coordinates list)**

**MIC OPTOELECTRONIC CO.,LTD MFL-R1000-3 LED FLOODLIGHT 1000W**  
 153180 lm, 999.3 W, 1 x 1 x 5050 (Correction Factor 1.000).

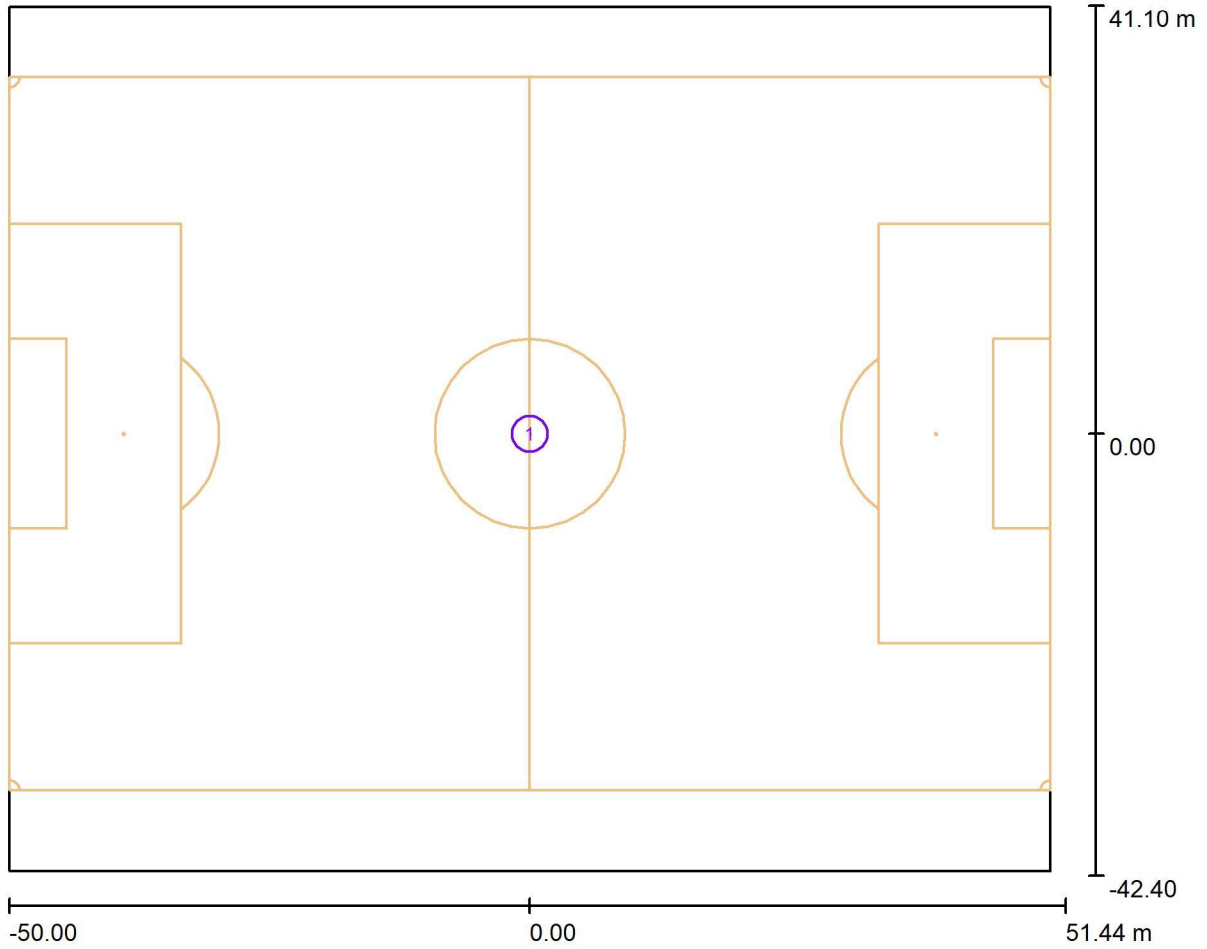


No.	Position [m]			Rotation [°]		
	X	Y	Z	X	Y	Z
1	-39.000	-41.062	17.000	67.6	0.0	11.3
2	-38.000	-41.062	17.000	69.5	0.0	-26.2
3	-37.000	-41.062	17.000	71.6	0.0	-39.9
4	-36.000	-41.062	17.000	67.3	0.0	-58.1
5	50.662	-38.723	17.000	63.0	0.0	7.0
6	-38.979	40.077	17.000	67.0	0.0	168.1
7	38.479	37.677	17.000	67.5	0.0	-164.8
8	49.986	-39.460	17.000	69.2	0.0	40.9
9	-37.979	40.077	17.000	66.8	0.0	-166.4
10	37.479	37.677	17.000	68.5	0.0	162.9
11	49.311	-40.198	17.000	74.3	0.0	51.4
12	-36.979	40.077	17.000	68.2	0.0	-153.0
13	36.479	37.677	17.000	70.4	0.0	151.1
14	48.635	-40.935	17.000	73.1	0.0	59.1
15	-35.979	40.077	17.000	71.1	0.0	-138.0
16	35.479	37.677	17.000	70.0	0.0	138.1



Operator  
Telephone  
Fax  
e-Mail

### Exterior Scene 1 / Sport Sites (layout plan)



Scale 1 : 726

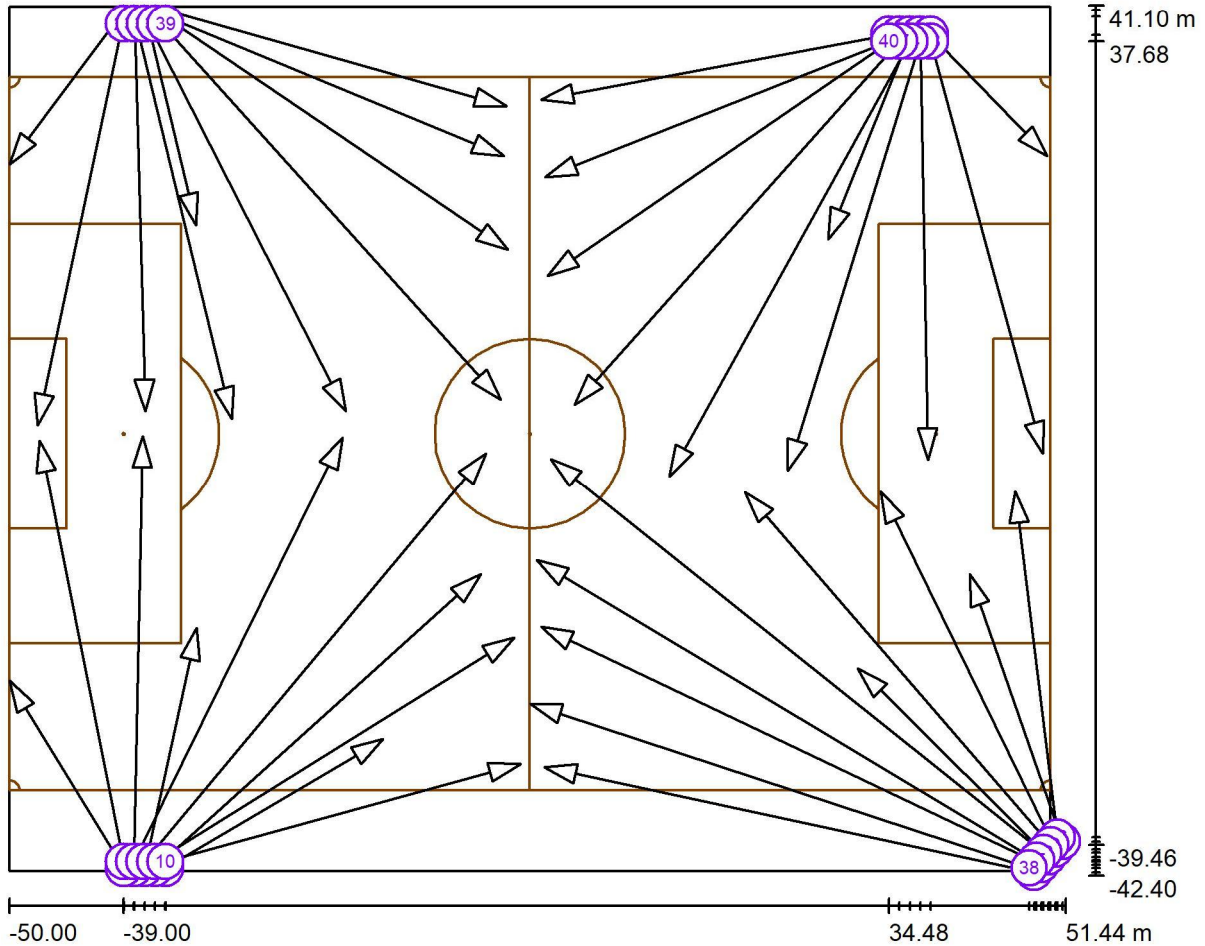
#### Sport Site Parts List

No.	Pieces	Designation
1	1	Soccer Field



Operator  
Telephone  
Fax  
e-Mail

**Exterior Scene 1 / Sport Luminaires (Coordinates List)**



Scale 1 : 726

**List of the Sport Luminaires**

Luminaire	Index	Position [m]			Aiming Point [m]			Angle [°]	Alignment	Pole
		X	Y	Z	X	Y	Z			
MIC OPTOELECTRONIC CO.,LTD MFL-R1000-3 LED FLOODLIGHT 1000W	1	-35.000	-41.687	16.000	-14.090	-29.339	0.000	33.4	(C 90, G IMax)	/
MIC OPTOELECTRONIC CO.,LTD MFL-R1000-3 LED FLOODLIGHT 1000W	2	-36.000	-41.687	16.000	-4.700	-13.500	0.000	20.8	(C 90, G IMax)	/
MIC OPTOELECTRONIC CO.,LTD MFL-R1000-3 LED FLOODLIGHT 1000W	3	-37.000	-41.687	16.000	-31.996	-18.688	0.000	34.2	(C 90, G IMax)	/
MIC OPTOELECTRONIC CO.,LTD MFL-R1000-3 LED FLOODLIGHT 1000W	4	-38.000	-41.687	16.000	-37.193	-0.198	0.000	21.1	(C 90, G IMax)	/

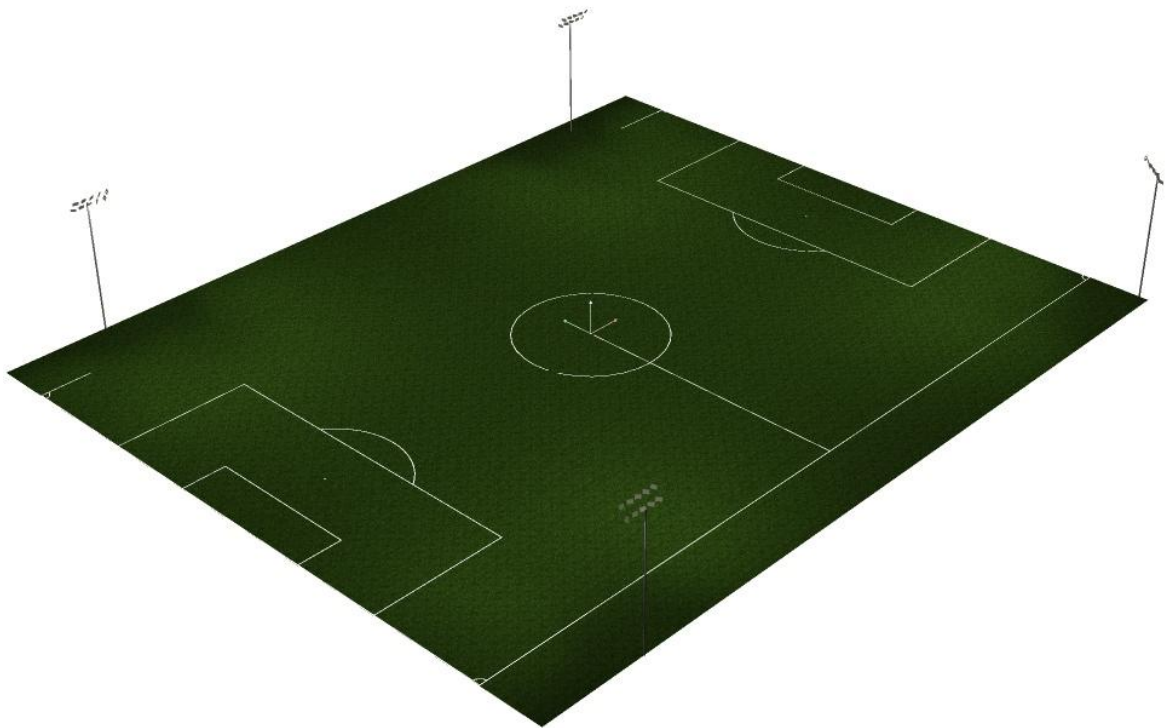


CO.,LTD MFL-R1000-3 LED FLOODLIGHT 1000W MIC OPTOELECTRONIC	28	38.479	37.677	17.000	49.233	-1.885	0.000	22.5	(C 90, G IMax)	/
CO.,LTD MFL-R1000-3 LED FLOODLIGHT 1000W MIC OPTOELECTRONIC	29	49.986	-39.460	17.000	20.651	-5.621	0.000	20.8	(C 90, G IMax)	/
CO.,LTD MFL-R1000-3 LED FLOODLIGHT 1000W MIC OPTOELECTRONIC	30	-37.979	40.077	17.000	-28.641	1.444	0.000	23.2	(C 90, G IMax)	/
CO.,LTD MFL-R1000-3 LED FLOODLIGHT 1000W MIC OPTOELECTRONIC	31	37.479	37.677	17.000	24.786	-3.566	0.000	21.5	(C 90, G IMax)	/
CO.,LTD MFL-R1000-3 LED FLOODLIGHT 1000W MIC OPTOELECTRONIC	32	49.311	-40.198	17.000	1.994	-2.410	0.000	15.7	(C 90, G IMax)	/
CO.,LTD MFL-R1000-3 LED FLOODLIGHT 1000W MIC OPTOELECTRONIC	33	-36.979	40.077	17.000	-17.677	2.201	0.000	21.8	(C 90, G IMax)	/
CO.,LTD MFL-R1000-3 LED FLOODLIGHT 1000W MIC OPTOELECTRONIC	34	36.479	37.677	17.000	13.367	-4.122	0.000	19.6	(C 90, G IMax)	/
CO.,LTD MFL-R1000-3 LED FLOODLIGHT 1000W MIC OPTOELECTRONIC	35	48.635	-40.935	17.000	0.627	-12.157	0.000	16.9	(C 90, G IMax)	/
CO.,LTD MFL-R1000-3 LED FLOODLIGHT 1000W MIC OPTOELECTRONIC	36	-35.979	40.077	17.000	-2.818	3.303	0.000	18.9	(C 90, G IMax)	/
CO.,LTD MFL-R1000-3 LED FLOODLIGHT 1000W MIC OPTOELECTRONIC	37	35.479	37.677	17.000	4.253	2.821	0.000	20.0	(C 90, G IMax)	/
CO.,LTD MFL-R1000-3 LED FLOODLIGHT 1000W MIC OPTOELECTRONIC	38	47.960	-41.672	17.000	0.012	-25.948	0.000	18.6	(C 90, G IMax)	/
CO.,LTD MFL-R1000-3 LED FLOODLIGHT 1000W MIC OPTOELECTRONIC	39	-34.979	40.077	17.000	-2.514	26.674	0.000	25.8	(C 90, G IMax)	/
CO.,LTD MFL-R1000-3 LED FLOODLIGHT 1000W MIC OPTOELECTRONIC	40	34.479	37.677	17.000	1.462	24.614	0.000	25.6	(C 90, G IMax)	/



Operator  
Telephone  
Fax  
e-Mail

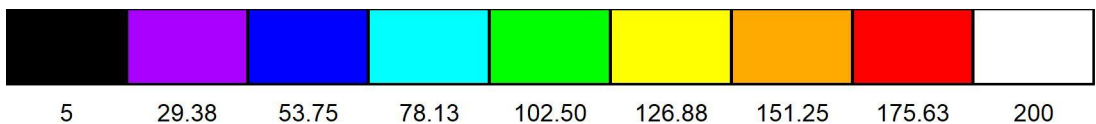
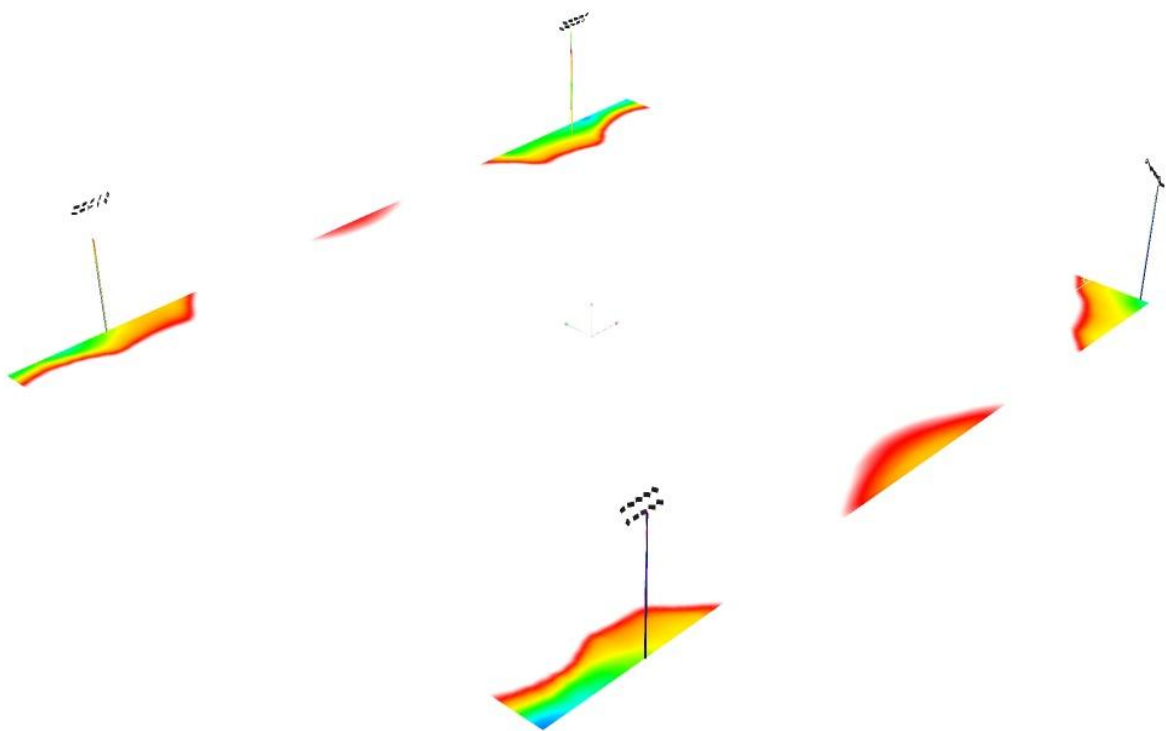
### Exterior Scene 1 / 3D Rendering





Operator  
Telephone  
Fax  
e-Mail

## Exterior Scene 1 / False Color Rendering

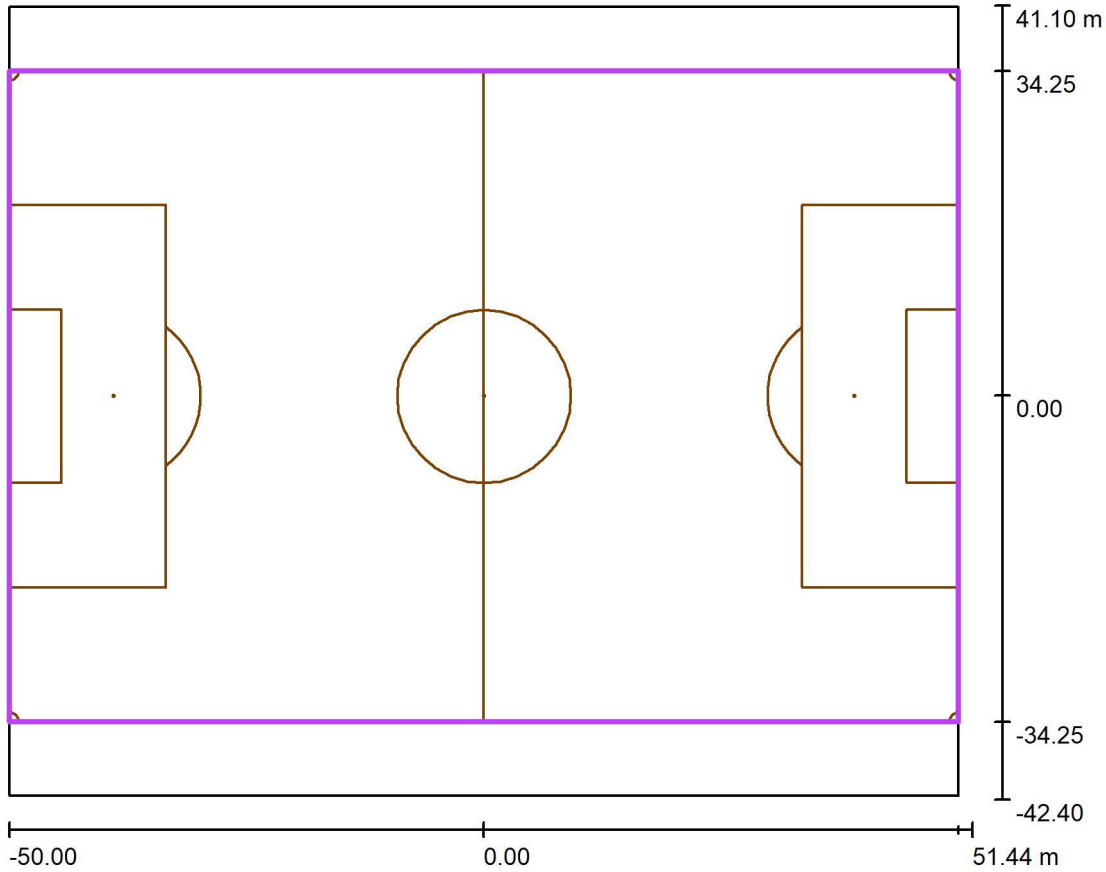


lx



Operator  
Telephone  
Fax  
e-Mail

**Exterior Scene 1 / Soccer Field 1 Calculation Grid (PA) / Summary**



Scale 1 : 797

Position: (0.000 m, 0.000 m, 0.000 m)  
 Size: (100.000 m, 68.500 m)  
 Rotation: (0.0°, 0.0°, 0.0°)  
 Type: Normal, Grid: 19 x 13 Points  
 Belongs to the following sport arena: Soccer Field 1

**Results overview**

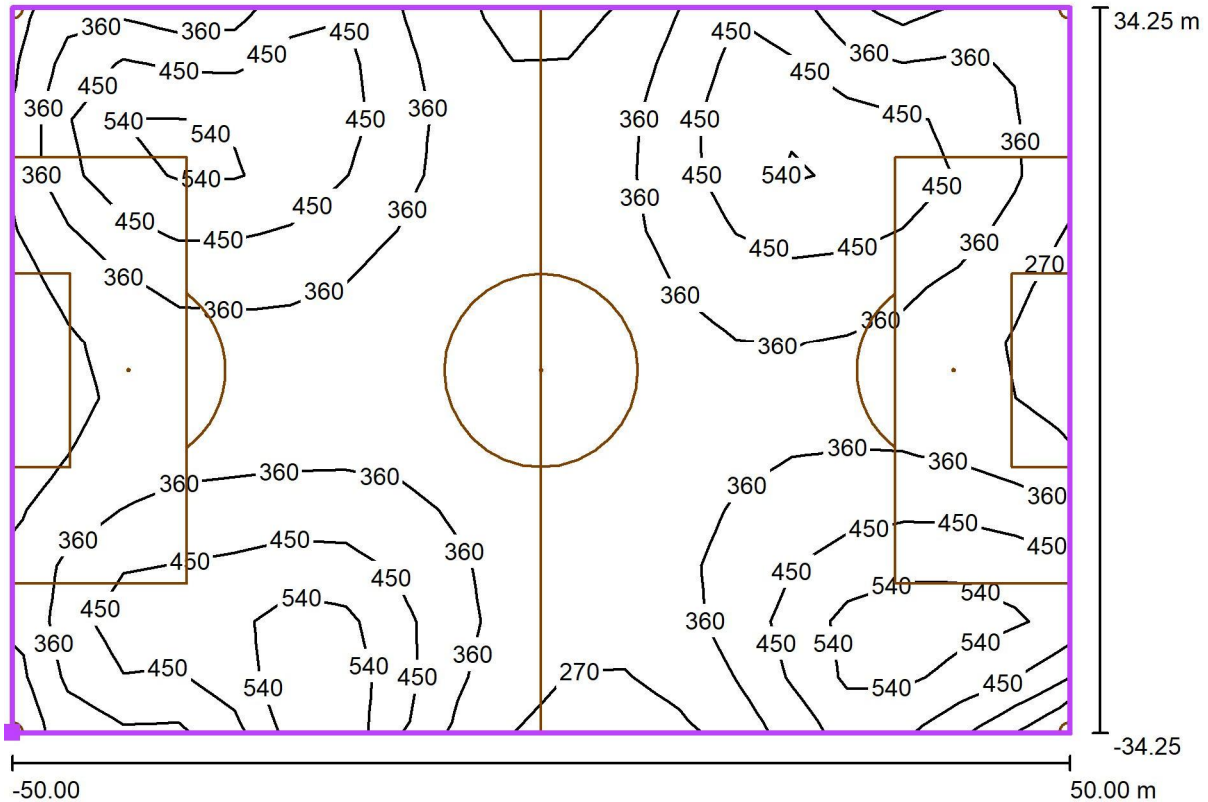
No.	Type	$E_{av}$ [lx]	$E_{min}$ [lx]	$E_{max}$ [lx]	u0	$E_{min} / E_{max}$	$E_{h\ m} / E_m$	H [m]	Camera
1	perpendicular	386	232	642	0.60	0.36	/	0.000	/

$E_{h\ m} / E_m$  = Relationship between middle horizontal and vertical illuminance, H = Measuring Height



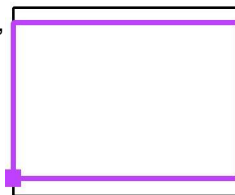
Operator  
 Telephone  
 Fax  
 e-Mail

**Exterior Scene 1 / Soccer Field 1 Calculation Grid (PA) / Isolines (E, Perpendicular)**



Values in Lux, Scale 1 : 715

Position of surface in external scene:  
 Marked point: (-50.000 m, -34.250 m, 0.000 m)



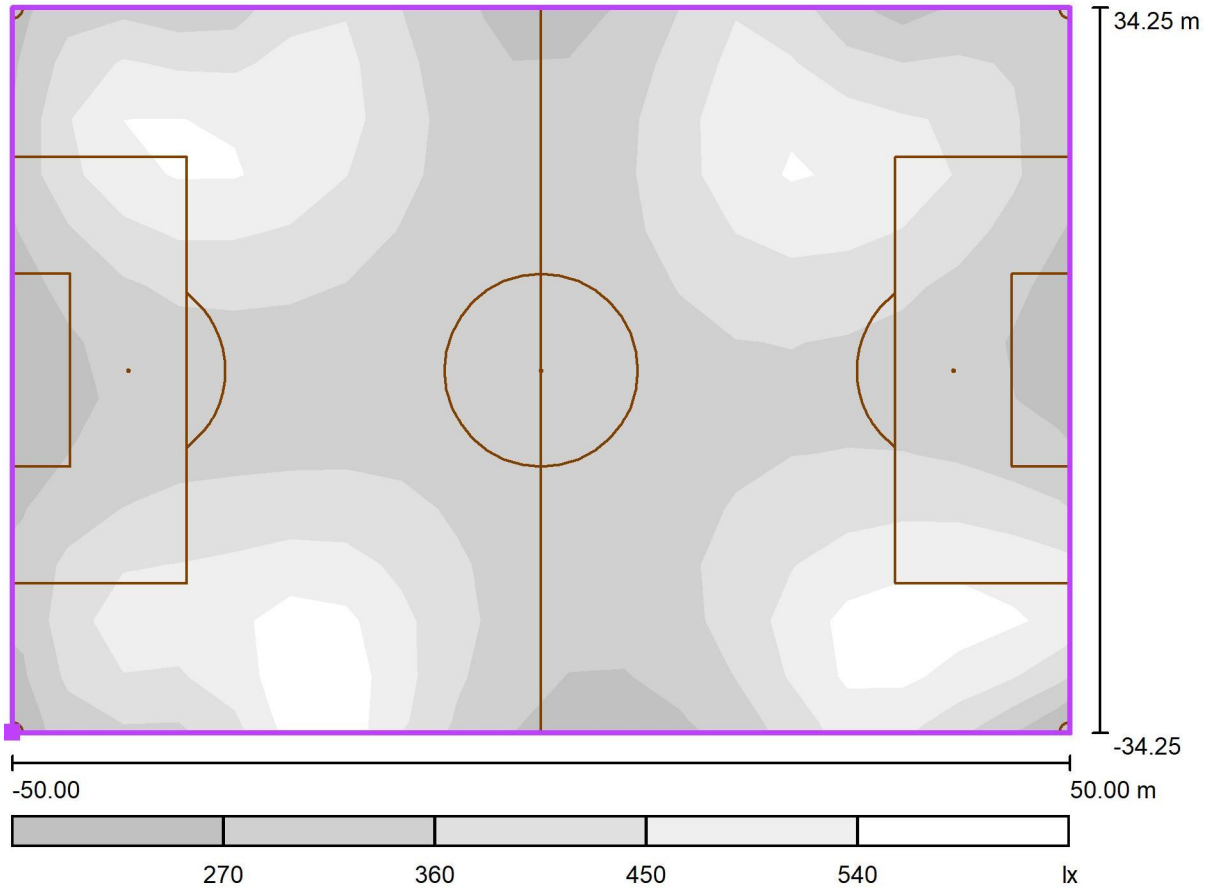
Grid: 19 x 13 Points

$E_{av}$ [lx]	$E_{min}$ [lx]	$E_{max}$ [lx]	u0	$E_{min} / E_{max}$
386	232	642	0.60	0.36



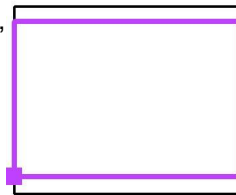
Operator  
 Telephone  
 Fax  
 e-Mail

**Exterior Scene 1 / Soccer Field 1 Calculation Grid (PA) / Greyscale (E, Perpendicular)**



Scale 1 : 715

Position of surface in external scene:  
 Marked point: (-50.000 m, -34.250 m, 0.000 m)



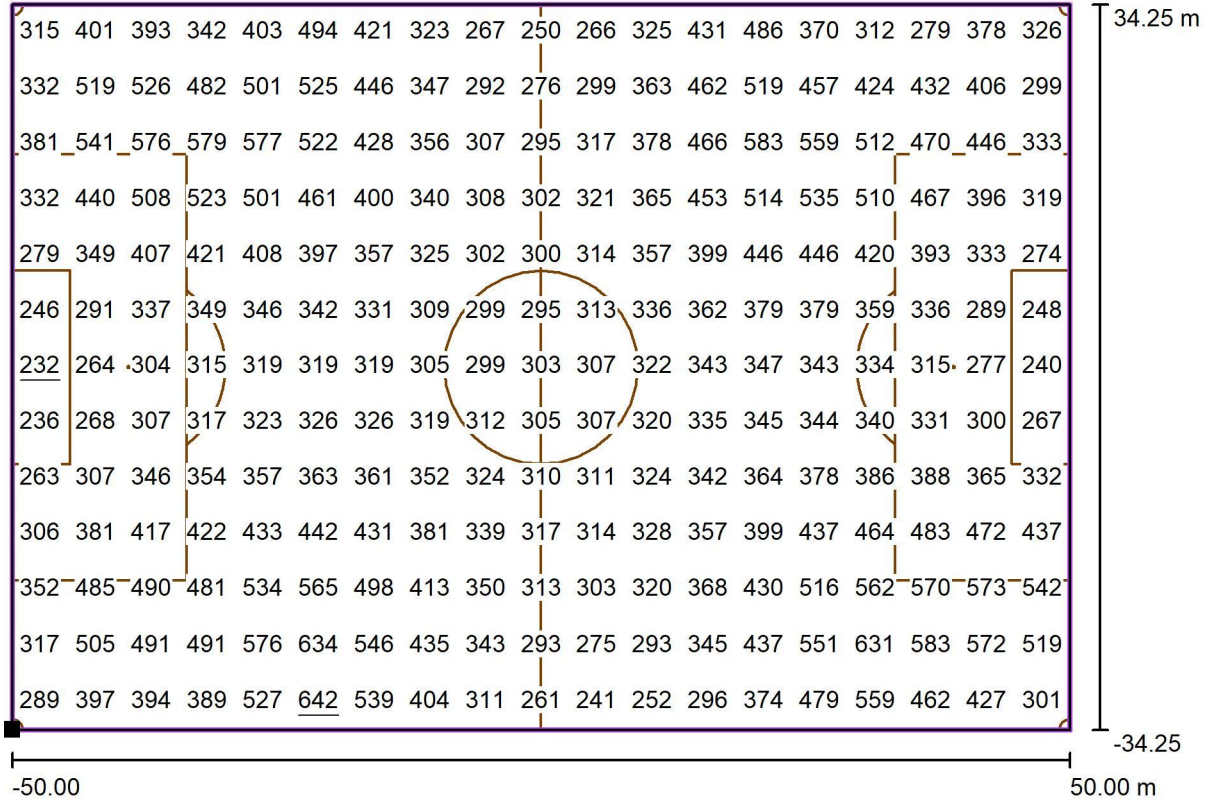
Grid: 19 x 13 Points

$E_{av}$ [lx]	$E_{min}$ [lx]	$E_{max}$ [lx]	u0	$E_{min} / E_{max}$
386	232	642	0.60	0.36



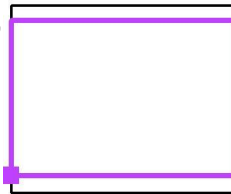
Operator  
Telephone  
Fax  
e-Mail

### Exterior Scene 1 / Soccer Field 1 Calculation Grid (PA) / Value Chart (E, Perpendicular)



Values in Lux, Scale 1 : 715

Position of surface in external scene:  
Marked point: (-50.000 m, -34.250 m, 0.000 m)



Grid: 19 x 13 Points

$E_{av}$ [lx]	$E_{min}$ [lx]	$E_{max}$ [lx]	u0	$E_{min} / E_{max}$
386	232	642	0.60	0.36