

# Project 1

Partner for Contact:  
Order No.:  
Company:  
Customer No.:

Date: 11.06.2024  
Operator:



Operator  
Telephone  
Fax  
e-Mail

## Table of contents

### Project 1

Project Cover	1
Table of contents	2
Luminaire parts list	3
<b>Exterior Scene 1</b>	
Planning data	4
Luminaires (layout plan)	5
Luminaires (coordinates list)	6
Sport Sites (Coordinates List)	8
Sport Luminaires (Coordinates List)	9
3D Rendering	11
False Color Rendering	12
<b>Exterior Surfaces</b>	
<b>General Sport Area 1 Calculation Grid (PA)</b>	
Summary	13
Isolines (E, Perpendicular)	14
Greyscale (E, Perpendicular)	15

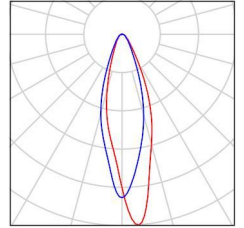


Operator  
Telephone  
Fax  
e-Mail

## Project 1 / Luminaire parts list

36 Pieces MIC OPTOELECTRONIC CO.,LTD MFL-R600  
LED FLOOD LIGHT 600W  
Article No.: MFL-R600  
Luminous flux (Luminaire): 80964 lm  
Luminous flux (Lamps): 81000 lm  
Luminaire Wattage: 608.2 W  
Luminaire classification according to CIE: 99  
CIE flux code: 81 93 98 99 100  
Fitting: 1 x User defined (Correction Factor  
1.000).

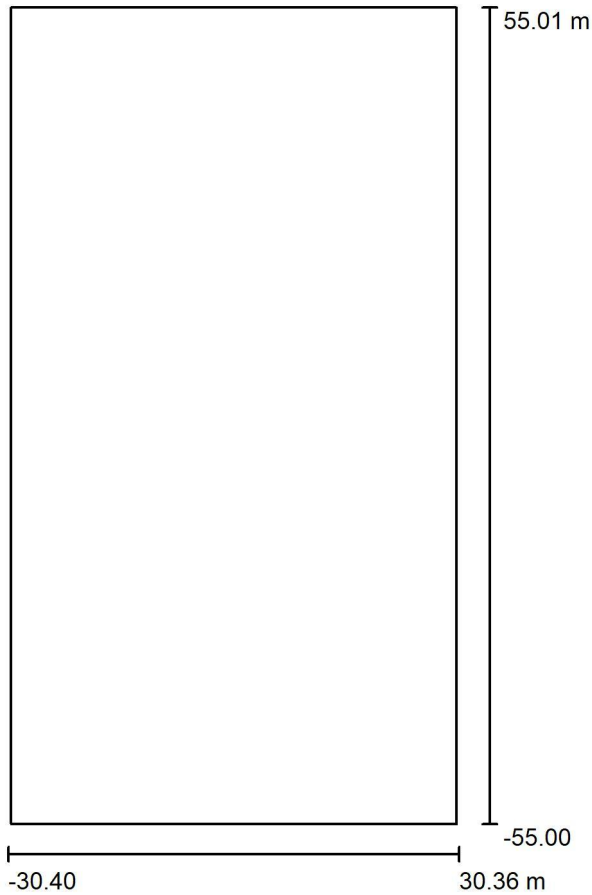
See our luminaire  
catalog for an image of  
the luminaire.





Operator  
 Telephone  
 Fax  
 e-Mail

**Exterior Scene 1 / Planning data**



Light loss factor: 0.80, ULR (Upward Light Ratio): 17.0%

Scale 1:1020

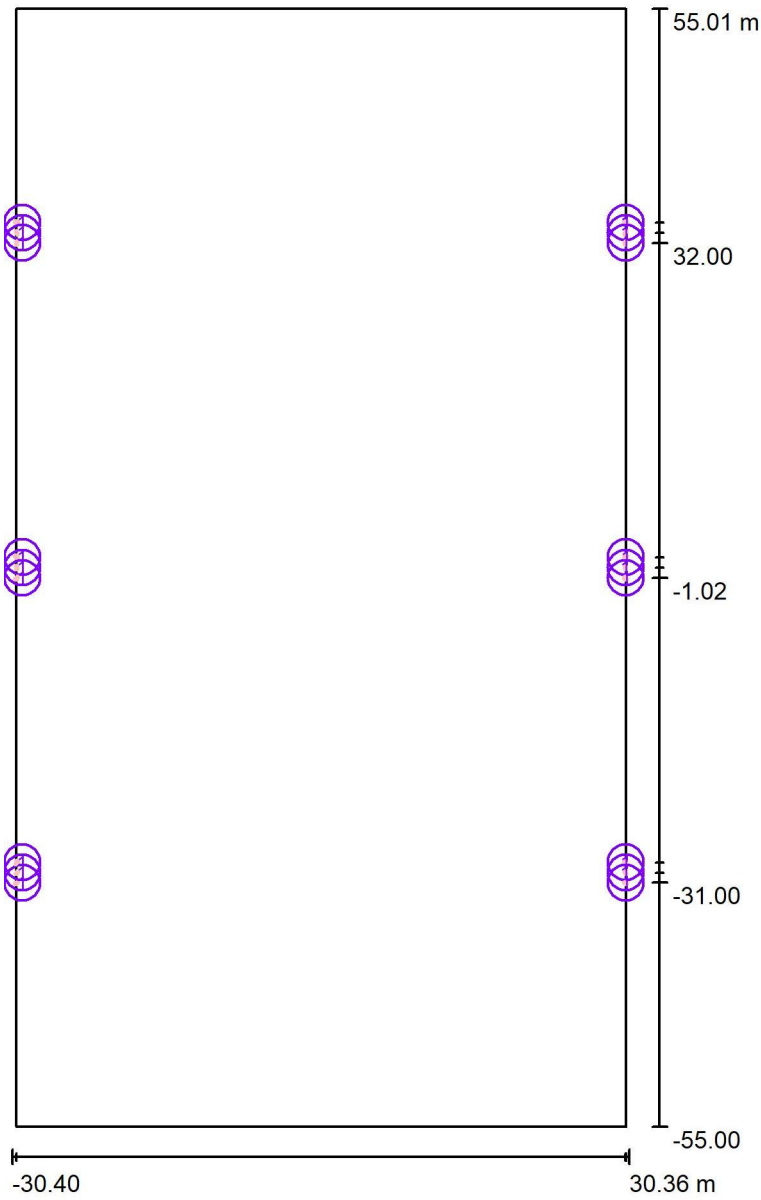
**Luminaire Parts List**

No.	Pieces	Designation (Correction Factor)	Φ (Luminaire) [lm]	Φ (Lamps) [lm]	P [W]
1	36	MIC OPTOELECTRONIC CO.,LTD MFL-R600 LED FLOOD LIGHT 600W (1.000)	80964	81000	608.2
Total:			2914689	Total: 2916000	21896.0



Operator  
Telephone  
Fax  
e-Mail

## Exterior Scene 1 / Luminaires (layout plan)



Scale 1 : 745

### Luminaire Parts List

No.	Pieces	Designation
1	36	MIC OPTOELECTRONIC CO.,LTD MFL-R600 LED FLOOD LIGHT 600W

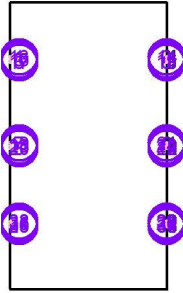


Operator  
 Telephone  
 Fax  
 e-Mail

**Exterior Scene 1 / Luminaires (coordinates list)**

**MIC OPTOELECTRONIC CO.,LTD MFL-R600 LED FLOOD LIGHT 600W**

80964 lm, 608.2 W, 1 x 1 x User defined (Correction Factor 1.000).



No.	Position [m]			Rotation [°]		
	X	Y	Z	X	Y	Z
1	-29.987	34.000	8.000	66.1	0.0	-27.0
2	29.988	34.000	8.000	66.1	0.0	27.0
3	-30.000	33.000	8.000	73.7	0.0	-57.2
4	30.000	33.000	8.000	73.7	0.0	57.2
5	-29.988	32.000	8.000	72.2	0.0	-106.5
6	29.987	32.000	8.000	72.2	0.0	106.5
7	-30.000	1.018	8.000	67.1	0.0	-27.9
8	-30.000	-1.018	8.000	67.1	0.0	-152.1
9	30.000	1.018	8.000	67.1	0.0	27.9
10	30.000	-1.018	8.000	67.1	0.0	152.1
11	-30.000	0.000	8.000	72.7	0.0	-77.8
12	30.000	0.000	8.000	72.7	0.0	77.8
13	-30.000	34.000	9.000	70.7	0.0	-53.3
14	30.000	34.000	9.000	70.7	0.0	53.3
15	-29.987	33.000	9.000	72.3	0.0	-69.9
16	29.988	33.000	9.000	72.3	0.0	69.9
17	-29.987	32.000	9.000	68.1	0.0	-83.3
18	29.987	32.000	9.000	68.1	0.0	83.3
19	-30.000	1.018	9.000	71.5	0.0	-61.8
20	-30.000	-1.018	9.000	71.5	0.0	-118.2
21	30.000	1.018	9.000	71.5	0.0	61.8
22	30.000	-1.018	9.000	71.5	0.0	118.2
23	-29.987	0.000	9.000	71.1	0.0	-101.7
24	29.988	0.000	9.000	71.1	0.0	101.7
25	-30.000	-31.000	8.000	67.6	0.0	-152.9
26	-29.987	-30.000	8.000	72.8	0.0	-109.3
27	29.988	-30.000	8.000	72.8	0.0	109.3
28	-30.000	-29.000	8.000	73.3	0.0	-81.7



Operator  
Telephone  
Fax  
e-Mail

### Exterior Scene 1 / Luminaires (coordinates list)

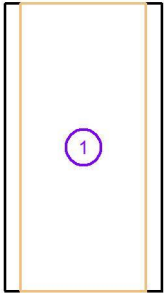
No.	Position [m]			Rotation [°]		
	X	Y	Z	X	Y	Z
29	30.000	-29.000	8.000	73.3	0.0	81.7
30	-30.000	-31.000	9.000	70.1	0.0	-134.4
31	-29.987	-30.000	9.000	72.6	0.0	-127.2
32	-29.988	-29.000	9.000	71.6	0.0	-124.3
33	29.988	-29.000	9.000	71.6	0.0	124.3
34	30.000	-31.000	8.000	68.9	0.0	157.9
35	30.000	-31.000	9.000	68.5	0.0	142.1
36	29.988	-30.000	9.000	71.1	0.0	131.9



Operator  
Telephone  
Fax  
e-Mail

### Exterior Scene 1 / Sport Sites (Coordinates List)

#### General Sport Area

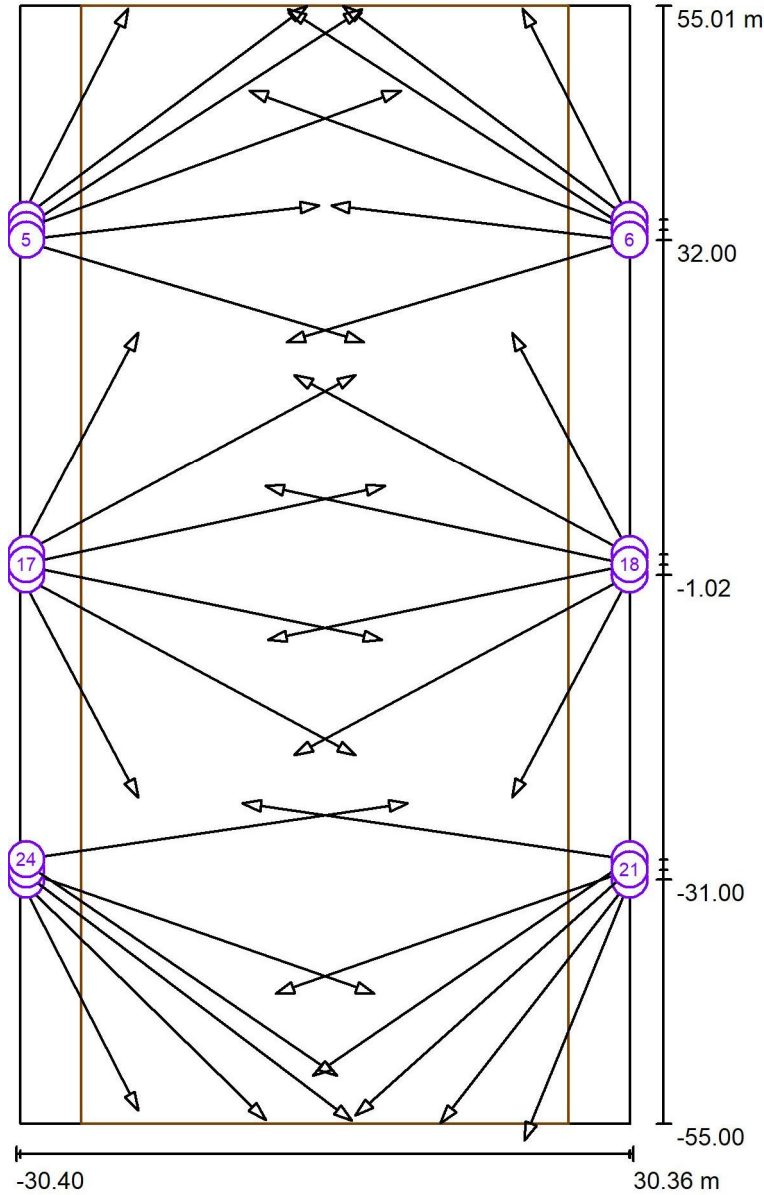


No.	Position [m]			Size Playing Area [m]		Size Total Area [m]		Rotation [°]		
	X	Y	Z	L	W	L	W	X	Y	Z
1	0.000	0.000	0.000	110.000	48.000	110.000	48.000	0.0	0.0	-90.0



Operator  
Telephone  
Fax  
e-Mail

**Exterior Scene 1 / Sport Luminaires (Coordinates List)**



Scale 1 : 745

**List of the Sport Luminaires**

Luminaire	Index	Position [m]			Aiming Point [m]			Angle [°]	Alignment	Pole
		X	Y	Z	X	Y	Z			
MIC OPTOELECTRONIC CO.,LTD MFL-R600 LED FLOOD LIGHT 600W	1	-29.987	34.000	8.000	-19.398	54.761	0.000	18.9	(C 90, G IMax)	/
MIC OPTOELECTRONIC CO.,LTD MFL-R600 LED FLOOD LIGHT 600W	2	29.988	34.000	8.000	19.398	54.761	0.000	18.9	(C 90, G IMax)	/
MIC OPTOELECTRONIC CO.,LTD MFL-R600 LED FLOOD LIGHT 600W	3	-30.000	33.000	8.000	3.644	54.695	0.000	11.3	(C 90, G IMax)	/
MIC OPTOELECTRONIC CO.,LTD MFL-R600 LED FLOOD LIGHT 600W	4	30.000	33.000	8.000	-3.644	54.695	0.000	11.3	(C 90, G IMax)	/

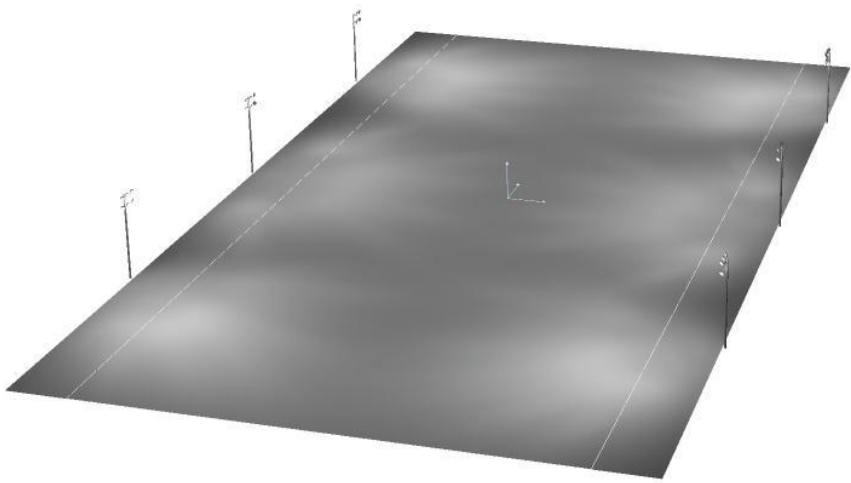


MFL-R600 LED FLOOD LIGHT 600W MIC OPTOELECTRONIC CO.,LTD	22	-30.000	-29.000	8.000	8.134	-23.441	0.000	11.7	(C 90, G IMax)	/
MFL-R600 LED FLOOD LIGHT 600W MIC OPTOELECTRONIC CO.,LTD	23	30.000	-29.000	8.000	-8.134	-23.441	0.000	11.7	(C 90, G IMax)	/
MFL-R600 LED FLOOD LIGHT 600W MIC OPTOELECTRONIC CO.,LTD	19	-30.000	-31.000	9.000	-5.851	-54.637	0.000	14.9	(C 90, G IMax)	/
MFL-R600 LED FLOOD LIGHT 600W MIC OPTOELECTRONIC CO.,LTD	20	-29.987	-30.000	9.000	2.652	-54.740	0.000	12.4	(C 90, G IMax)	/
MFL-R600 LED FLOOD LIGHT 600W MIC OPTOELECTRONIC CO.,LTD	24	-29.988	-29.000	9.000	1.200	-50.300	0.000	13.4	(C 90, G IMax)	/
MFL-R600 LED FLOOD LIGHT 600W MIC OPTOELECTRONIC CO.,LTD	25	29.988	-29.000	9.000	-1.200	-50.300	0.000	13.4	(C 90, G IMax)	/
MFL-R600 LED FLOOD LIGHT 600W MIC OPTOELECTRONIC CO.,LTD	26	30.000	-31.000	8.000	19.591	-56.669	0.000	16.1	(C 90, G IMax)	/
MFL-R600 LED FLOOD LIGHT 600W MIC OPTOELECTRONIC CO.,LTD	26	30.000	-31.000	9.000	11.346	-54.968	0.000	16.5	(C 90, G IMax)	/
MFL-R600 LED FLOOD LIGHT 600W MIC OPTOELECTRONIC CO.,LTD	21	29.988	-30.000	9.000	2.964	-54.222	0.000	13.9	(C 90, G IMax)	/



Operator  
Telephone  
Fax  
e-Mail

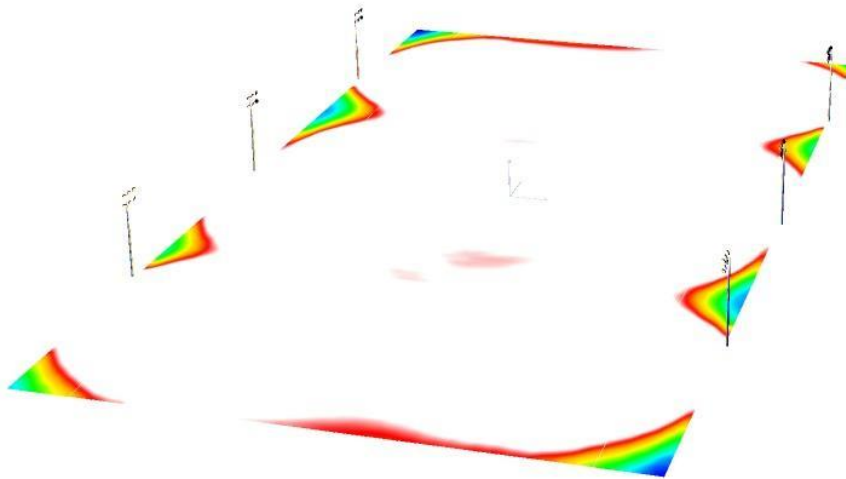
### Exterior Scene 1 / 3D Rendering





Operator  
Telephone  
Fax  
e-Mail

## Exterior Scene 1 / False Color Rendering



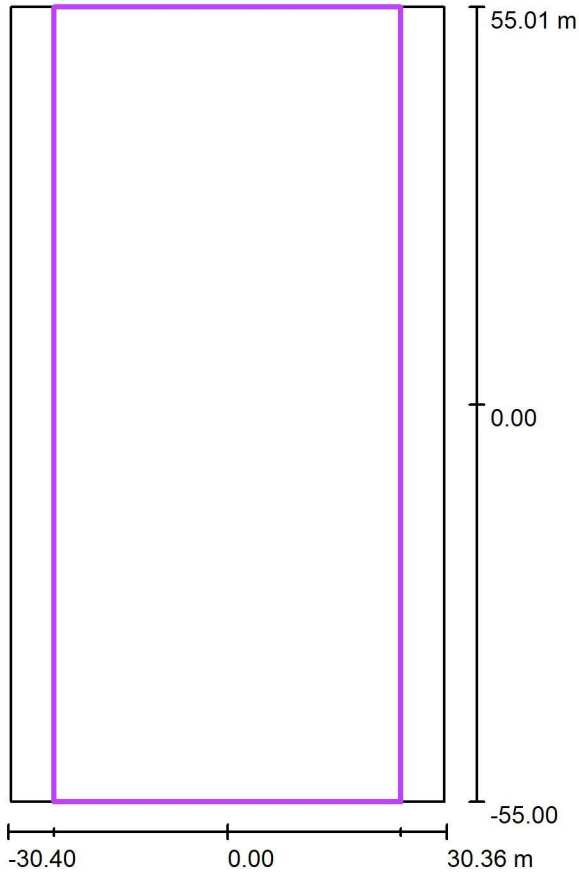
5      20.63      36.25      51.88      67.50      83.13      98.75      114.38      130

lx



Operator  
Telephone  
Fax  
e-Mail

### Exterior Scene 1 / General Sport Area 1 Calculation Grid (PA) / Summary



Scale 1 : 1049

Position: (0.000 m, 0.000 m, 0.000 m)  
 Size: (110.000 m, 48.000 m)  
 Rotation: (0.0°, 0.0°, -90.0°)  
 Type: Normal, Grid: 21 x 9 Points  
 Belongs to the following sport arena: General Sport Area 1

#### Results overview

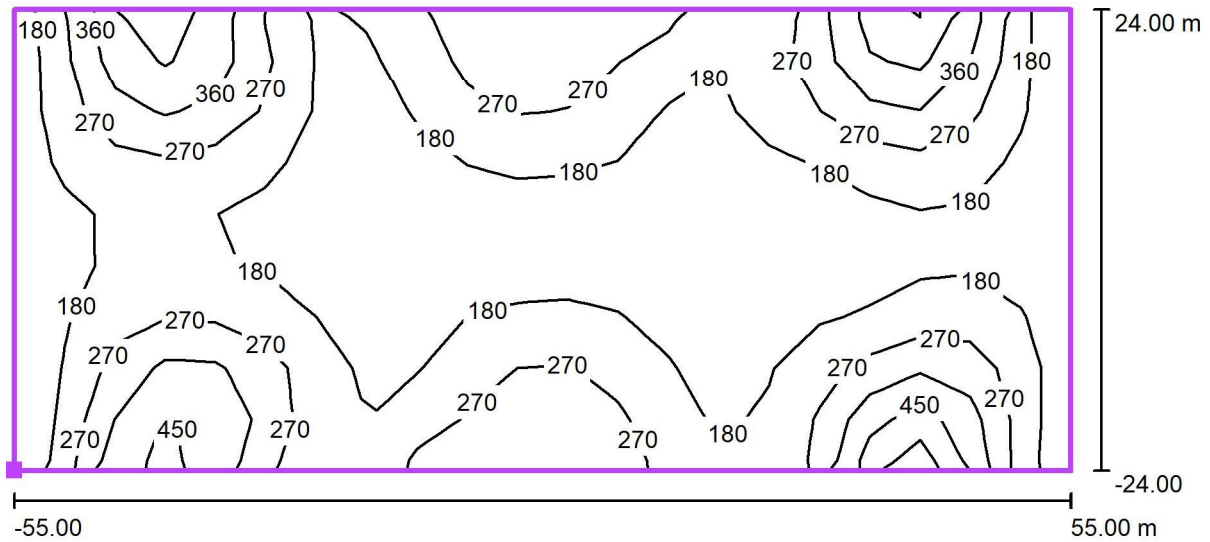
No.	Type	$E_{av}$ [lx]	$E_{min}$ [lx]	$E_{max}$ [lx]	u0	$E_{min} / E_{max}$	$E_{h\ m} / E_m$	H [m]	Camera
1	perpendicular	230	127	576	0.55	0.22	/	0.000	/

$E_{h\ m} / E_m$  = Relationship between middle horizontal and vertical illuminance, H = Measuring Height



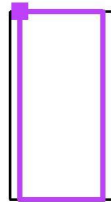
Operator  
Telephone  
Fax  
e-Mail

**Exterior Scene 1 / General Sport Area 1 Calculation Grid (PA) / Isolines (E, Perpendicular)**



Values in Lux, Scale 1 : 787

Position of surface in external scene:  
Marked point: (-24.000 m, 55.000 m, 0.000 m)



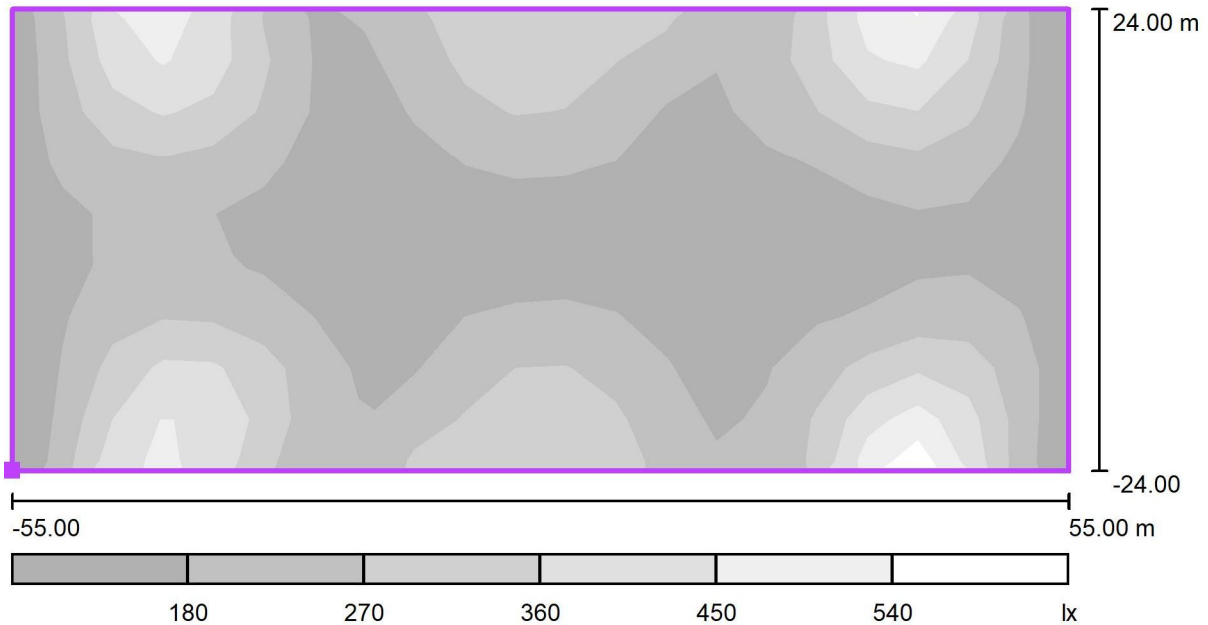
Grid: 21 x 9 Points

$E_{av}$ [lx]	$E_{min}$ [lx]	$E_{max}$ [lx]	u0	$E_{min} / E_{max}$
230	127	576	0.55	0.22



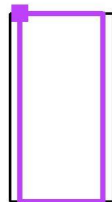
Operator  
Telephone  
Fax  
e-Mail

**Exterior Scene 1 / General Sport Area 1 Calculation Grid (PA) / Greyscale (E, Perpendicular)**



Scale 1 : 787

Position of surface in external scene:  
Marked point: (-24.000 m, 55.000 m, 0.000 m)



Grid: 21 x 9 Points

$E_{av}$ [lx]	$E_{min}$ [lx]	$E_{max}$ [lx]	u0	$E_{min} / E_{max}$
230	127	576	0.55	0.22