



# MIC 180W LED STREET LIGHT

LIGHT THE WORLD



ITEM No.: MSL-F180-4

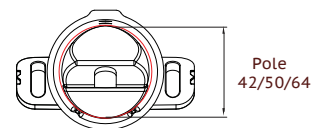
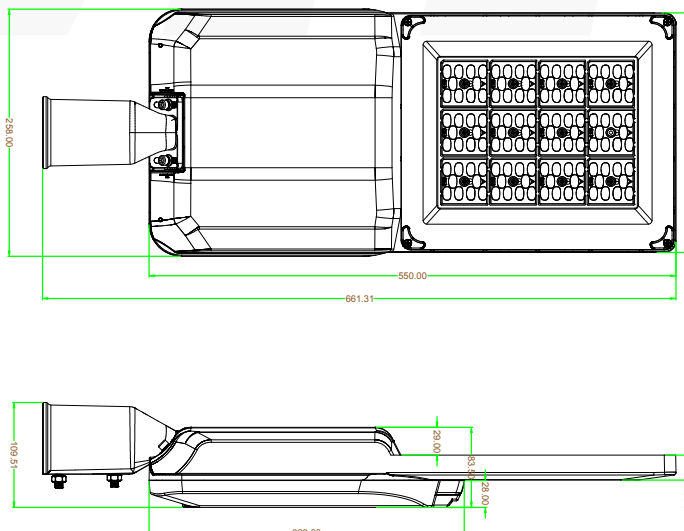
## Electrical Specifications

• Led Power	180w
• IP Grade	IP66
• IK	IK08
• Input Voltage	85-305V AC & 12V/24V DC
• Operating Temperature	-40°C to +50°C
• Driver Brand	Meanwell / Moso  
• Power Factor (PF)	>0.95
• Sensor	Photocell (optional)
• Auto cut off	Open driver case auto cut off power
• Certification	CE,ROHS,TUV,ETL,TUV,CB,IECEE, SASO/SABER

## Photometric & Packing Specifications

• Led Lamp	SMD 5050 	• Guarantee	5 years 
• Lumen Output	>30600LM	• CCT	2700k~6500k
• Light Efficiency	170lm/w	• Fitment Baser	Slip fitter
• Led Quantity	120pcs LEDs	• Material	Aluminum+Glass+Optical Lens
• Beam Angle	Type (2, 3, 4)	• NW/GW	5.1kg/6.1kg
• Life span	>50000 hours	• Product size	662*258*110mm
• CRI	>80	• Carton size	700*281*117mm, 1pcs/CTN

## Product size(unit:mm)



## Key Features

The luminaire design is based on a three-compartment concept, consisting of an LED engine, power supply and spigot compartment. This allows for easy installation without the risk of jeopardizing the IP integrity of the luminaire. Furthermore, the hinging concept allows the easy replacement of the LED engine in case of future upgrades or maintenance.

Surge protection: 10kV/10kA  
Optional: 20kV/20kA

To maximize the reliability of the LEDs, the photometrical engine is completely sealed to IP 66. This ensures that the photometric performance is maintained over time.

The electronic power supply is suitable for operation with a 85-305V 50Hz single phase system. (DC versions are available). The power factor is rated at  $\geq 0,95$ . The efficiency is rated 89%.

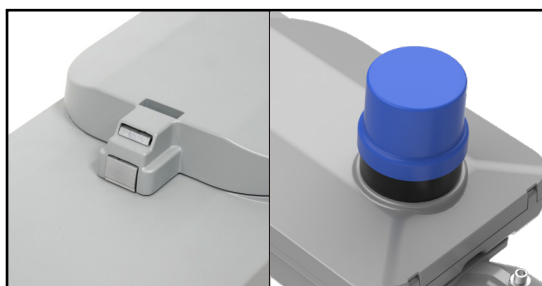
The power supply is automatically disengaged when opening the luminaire.

Special use of stainless steel inserts to prevent galvanic corrosion between stainless steel and aluminum, allowing future removal of the luminaire from the spigot

The luminaire housing is manufactured of marine-grade aluminum

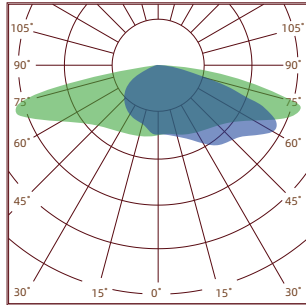
Secured by stainless steel latches and access screw

Integrated vent (breather) for rapid pressure equalisation and reduction of condensation

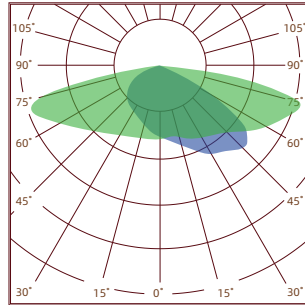


NEMA 7-Pin complete with plug-in surge protection for easy replacement

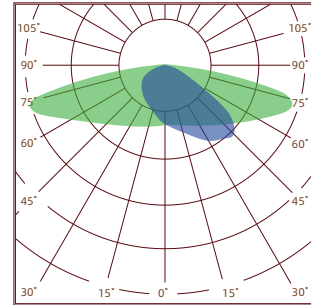
## Spectrum (Four lens available)



Type II

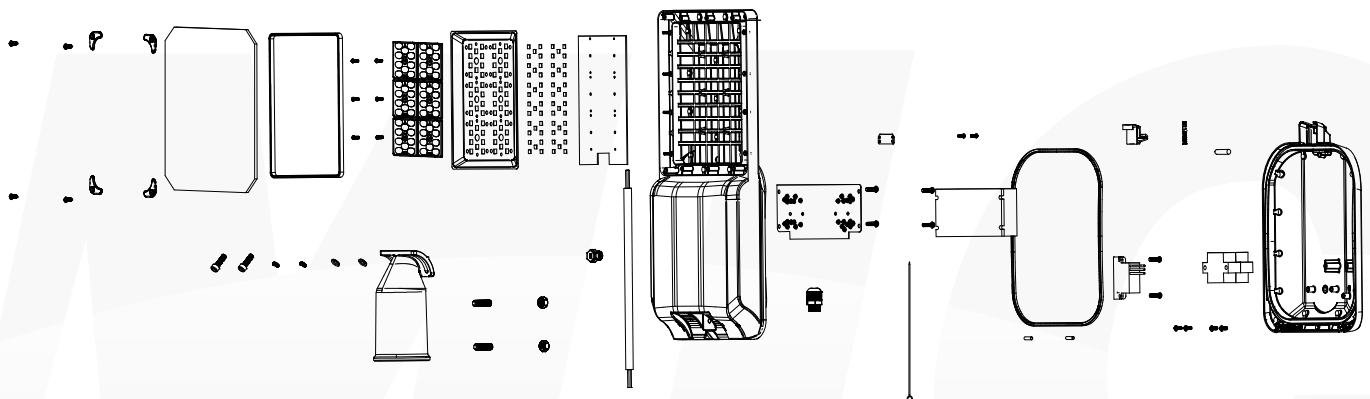


Type III



Type IV

## Explosion structure



## Application



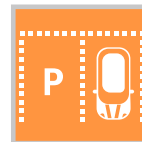
INTERCHANGE



ROADS & MOTORWAYS



URBAN & RESIDENTIAL  
STREETS



CAR PARKS



BIKE & PEDESTRIAN  
PATHS



HIGHMAST  
LIGHTING



SECURITY  
LIGHTING



INDUSTRIAL  
HARBOUR



LOADING BAY



SQUARES & PEDESTRIAN  
AREAS