


MIC 1000W LED FLOOD LIGHT

LIGHT THE WORLD



ITEM No.: MFL-R1000-3

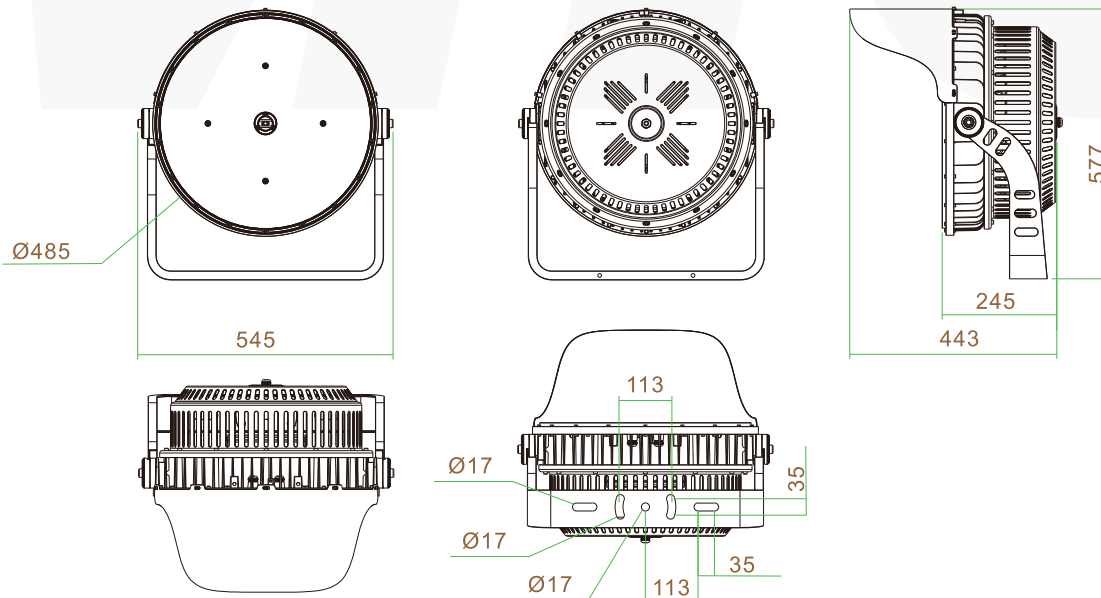
Electrical Specifications

• Led Power	1000w
• IP Grade	IP66
• IK	IK08
• Input Voltage	AC85-300V&AC180-528V
• Operating Temperature	-35°C to +50°C
• Driver Brand	Meanwell driver 
• Power Factor (PF)	>0.95
• Driver Efficiency	>92%
• Certification	CE,ROHS,TUV,FCC,ETL,IECEE,CB

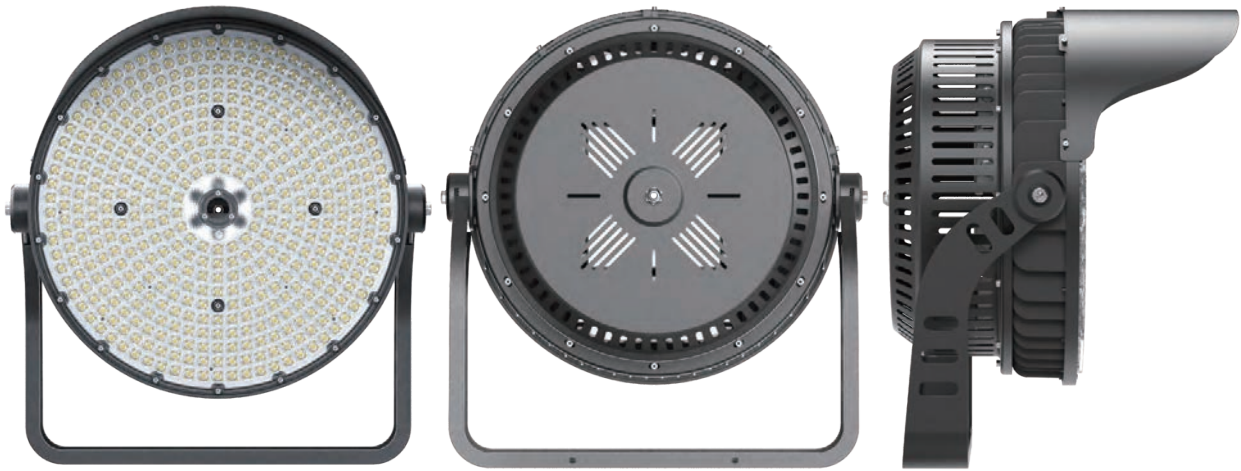
Photometric & Packing Specifications

• Led Lamp	SMD 5050 	• Guarantee	6 years 
• Led Quantity	400pcs LEDs	• CCT	2700k~6500k
• Lumen Output	>160,000LM	• CRI	>80
• Light Efficient	160lm/w	• NW/GW	20.5kg/22.2kg
• Beam angle	12°/22°/40°/60°	• Product size	L545*W577*H443mm
• Life span	>50,000 hours	• Carton size	63*59*31cm, 1pcs/CTN

Product size(unit:mm)



OVERVIEW



EXPLODED

Aluminum Back Cover

Cut the light eaves upward to prevent light from scattering toward the sky, eliminating light pollution and restoring a clean starry sky.

ADC12 Diecasting Aluminum Heatsink, Thermal efficiency up to 96W/M. K. °

High thermal conductivity aluminum PCB, rapid heat dissipation and reduced light decay.

Copper waterproof cable gland

Brand Waterproof LED Driver

The heat dissipation breathing valve can effectively avoid the sealing failure caused by thermal expansion and contraction.

Strong iron bracket, more secure installation

High Lumen 5050SMD Light Source

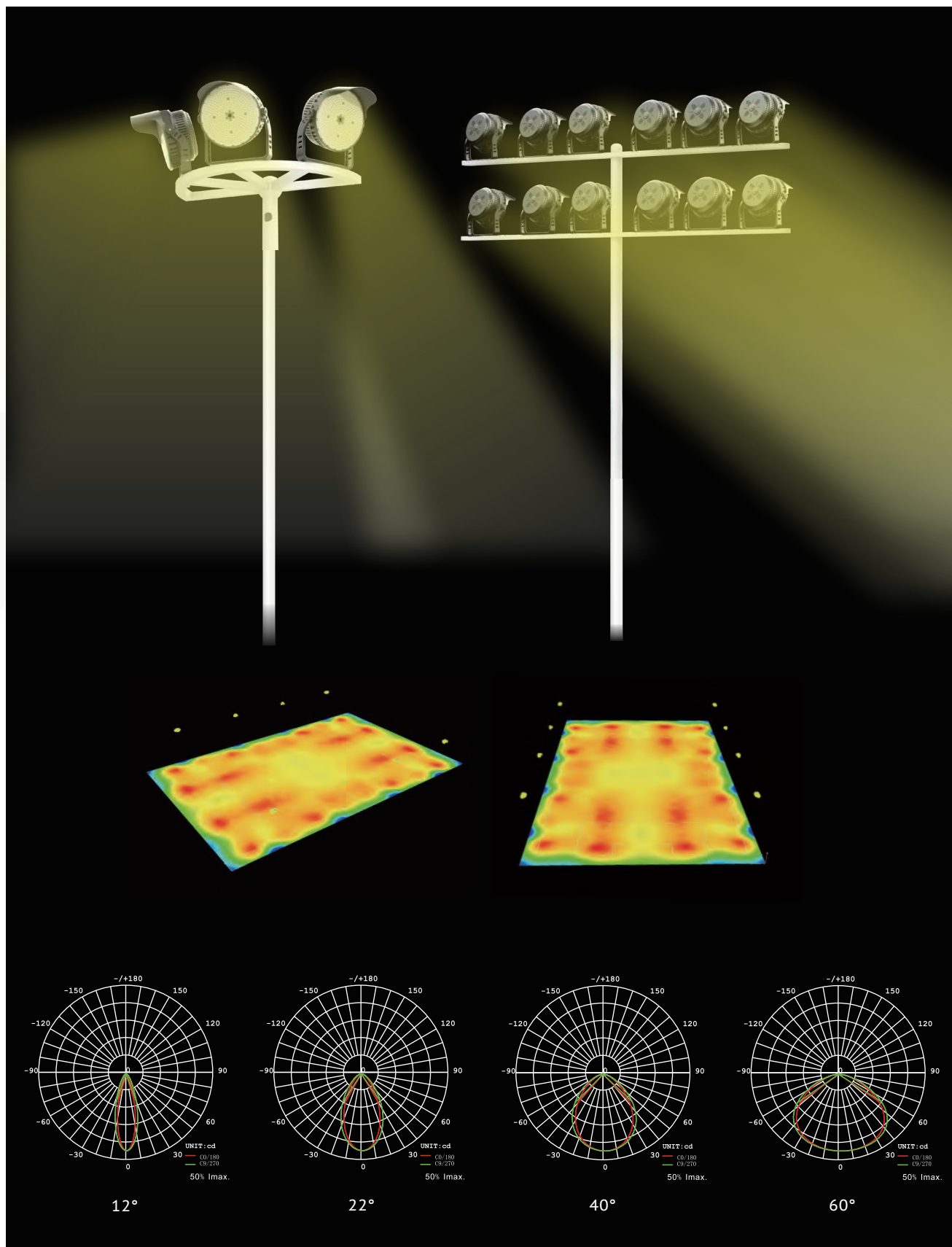
Silicone waterproof gel. UV-resistant material, reliable and will not fail

Optical PC lens, no yellowing after long-term use

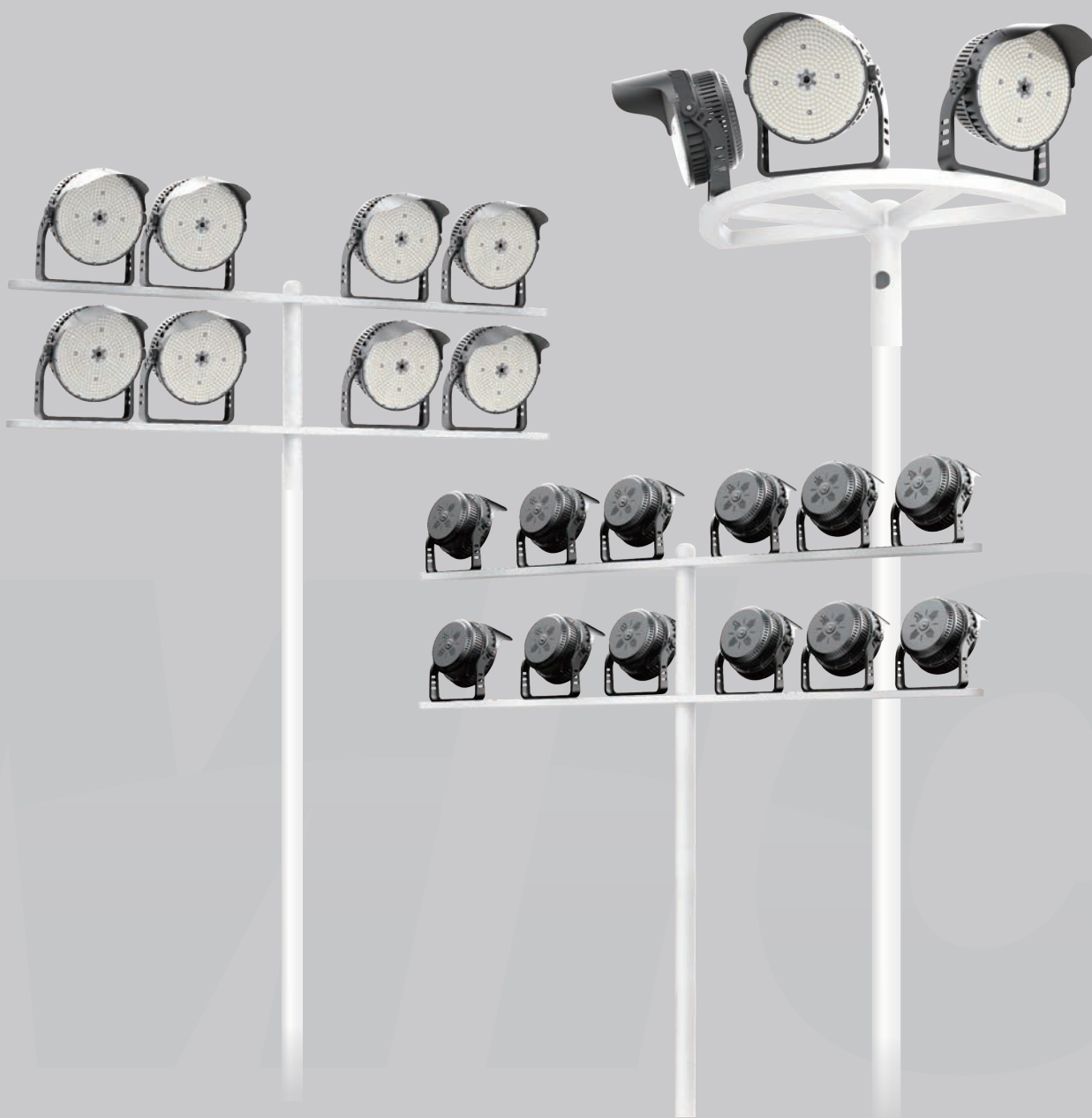
OPTICS

Technical support.

Provide the length, width, height and other parameters of the space, and tell us the purpose of the space. and we can conduct professional DIALUX lighting simulation for you. Pre-evaluate the number of lamps to be installed and the illumination effect for your project. We have complete .ies files for each lamp, welcome to request.



OPTICS



Floor installation



Ceiling mounted



Wall mounted



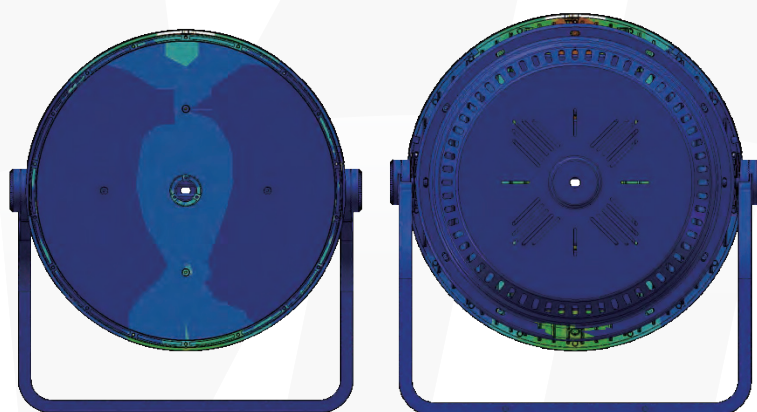
Pole mounted



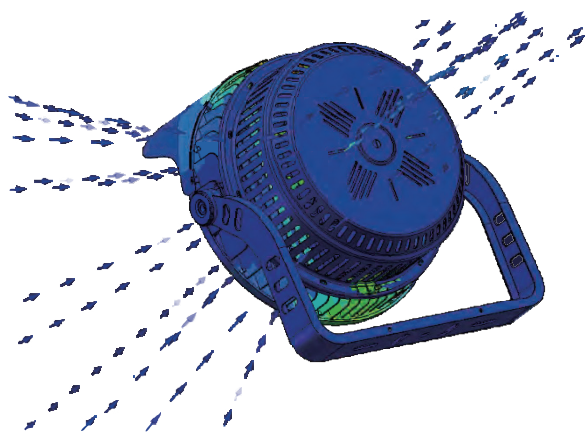
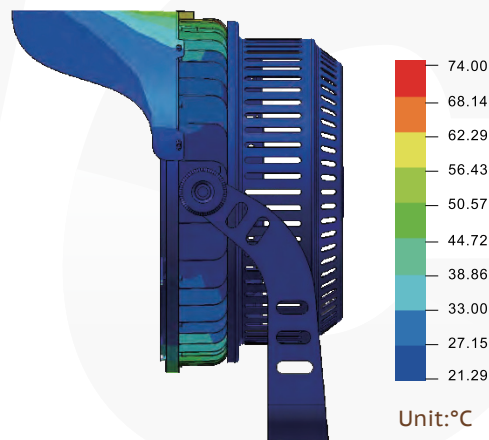
Widely used in basketball courts, indoor gymnasiums, squares, construction sites, docks, parking lots intersections, bridges, factories, etc.

THERMAL MANAGEMENT

We use advanced FEA technology to optimize the heat dissipation structure design of products and provide customers with better cost performance.



Thermal Conductivity



Thermal Air Convection



Thermal Effects to Air

Note: Due to errors in electronic component efficiency, the listed temperatures are for reference only.