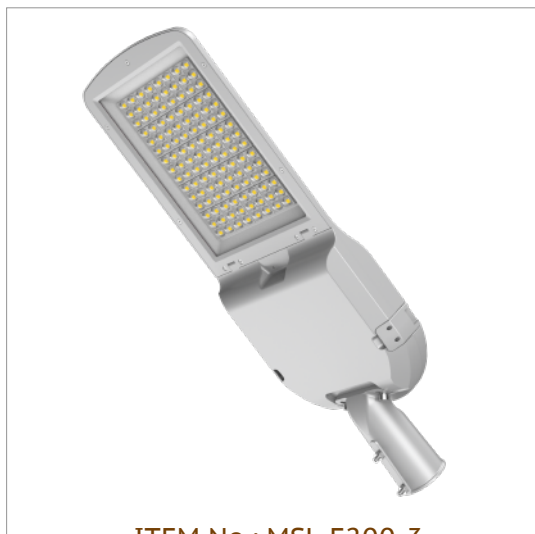


MIC 200W LED STREET LIGHT

LIGHT THE WORLD



ITEM No.: MSL-F200-3

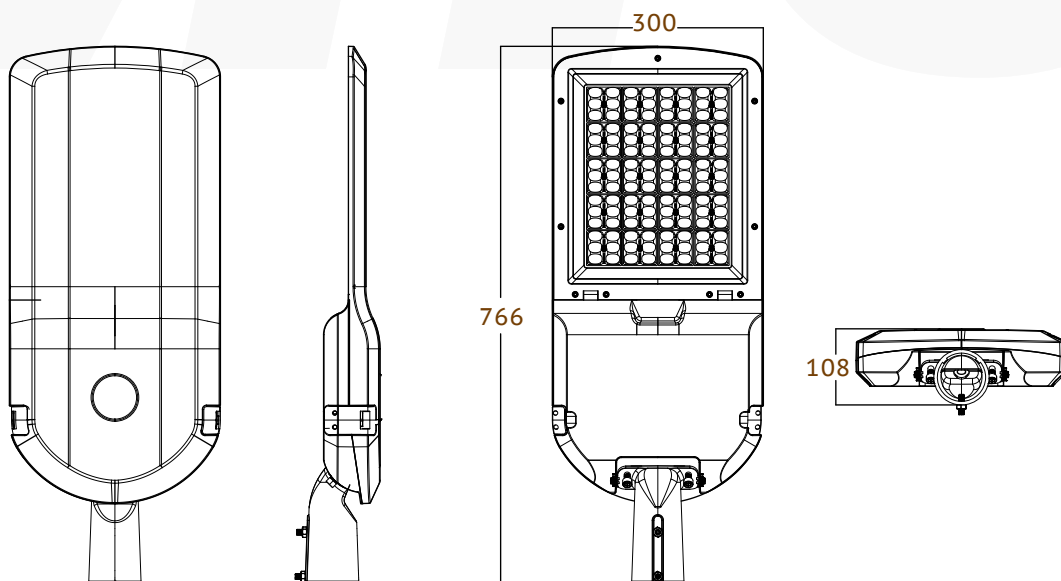
Electrical Specifications

• Led Power	200w
• IP Grade	IP66
• IK	IK09
• Input Voltage	85-305V AC & 12V/24V DC
• Operating Temperature	-40°C to +50°C
• Driver Brand	Meanwell / Moso / Sosen
• Power Factor (PF)	>0.95
• Sensor	Photocell (optional)
• Auto cut off	Open driver case auto cut off power
• Certification	CE,ROHS,TUV,ETL,TUV,CB,IECEE, ENEC,UKCA,SASO/SABER

Photometric & Packing Specifications

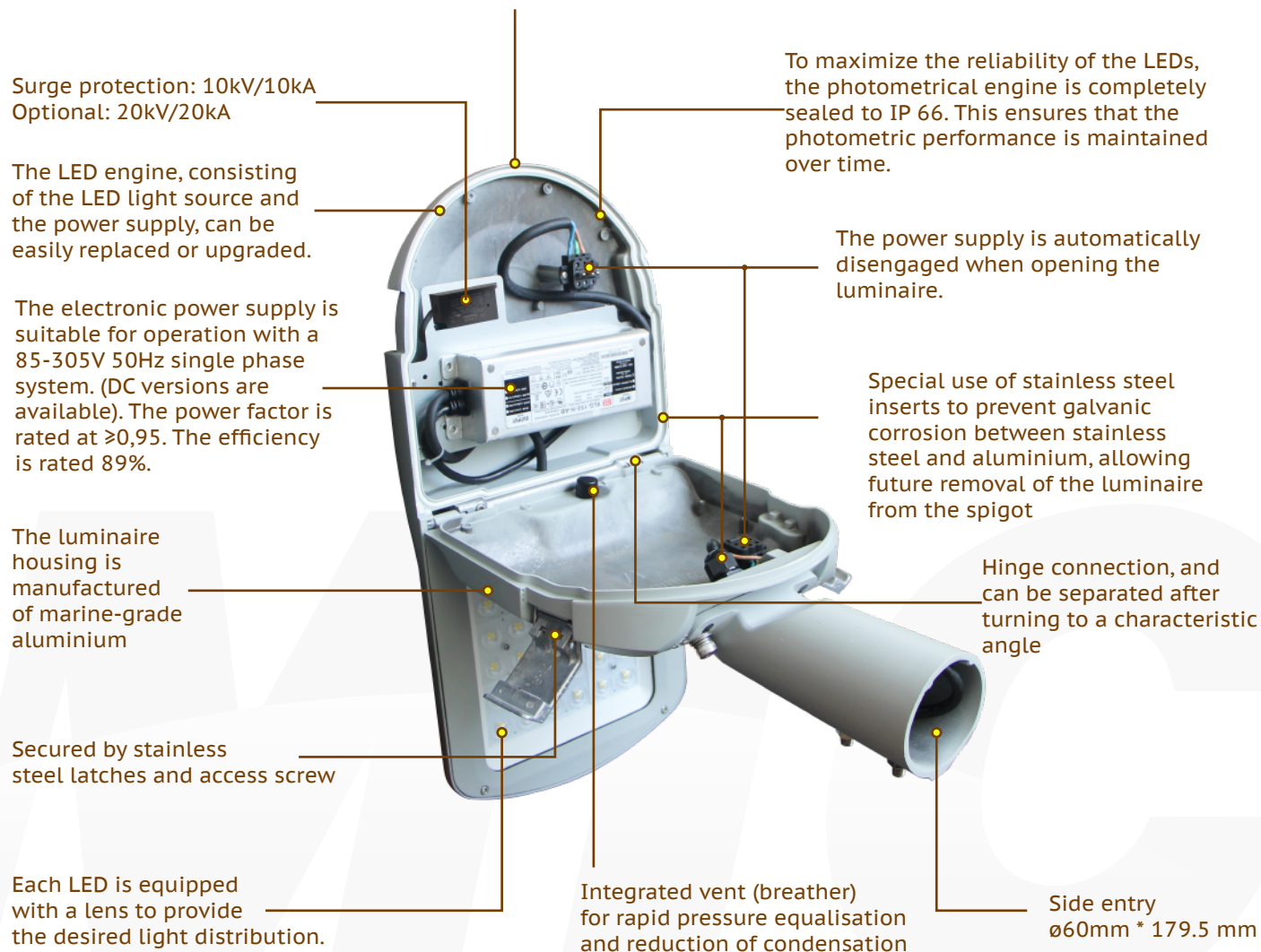
• Led Lamp	SMD 5050	PHILIPS	• Guarantee	MW 7 years, Moso/Sosen 5 years
• Lumen Output	>34000LM		• CCT	2700k~6500k
• Light Efficiency	170lm/w		• Fitment Baser	Slip fitter
• Led Quantity	160pcs LEDs		• Material	Aluminum+Glass+Optical Lens
• Beam Angle	Type (2, 3, 4)		• NW/GW	8kg/8.8kg
• Life span	>50000 hours		• Product size	766*300*108mm
• CRI	>80		• Carton size	786*320*128mm, 1pcs/CTN

Product size



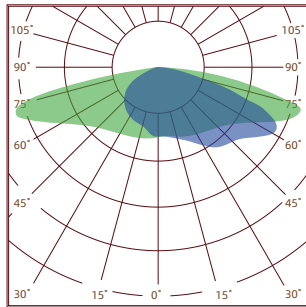
Key Features

The luminaire design is based on a three-compartment concept, consisting of an LED engine, power supply and spigot compartment. This allows for easy installation without the risk of jeopardizing the IP integrity of the luminaire. Furthermore, the hinging concept allows the easy replacement of the LED engine in case of future upgrades or maintenance.

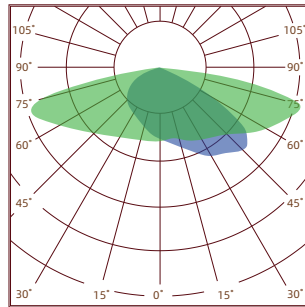


NEMA 7-Pin complete with plug-in surge protection for easy replacement

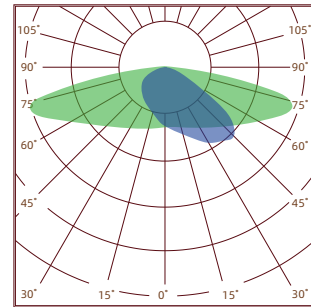
Spectrum (Four lens available)



Type II

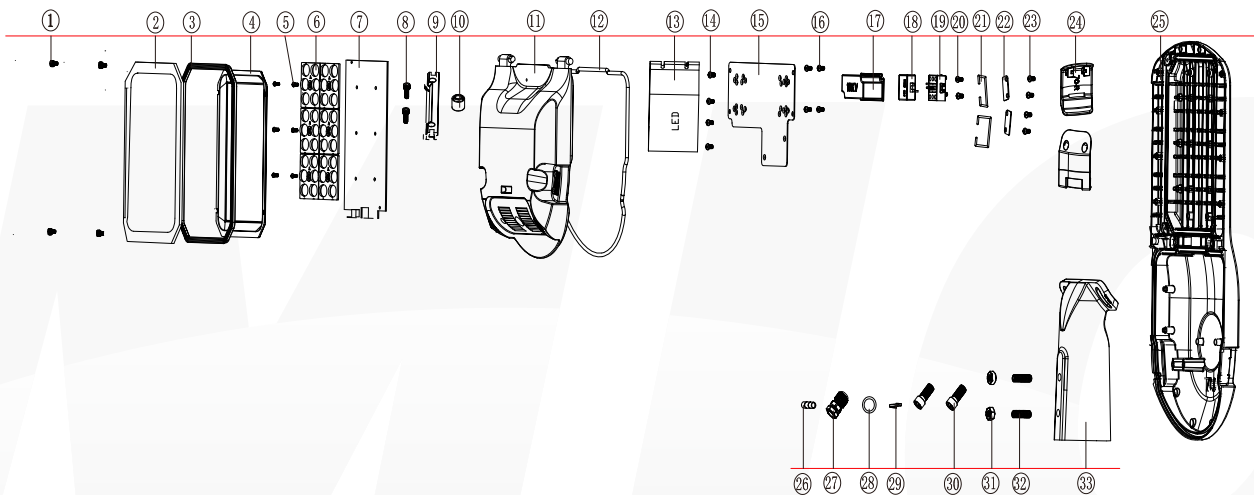


Type III



Type IV

Explosion structure



Application



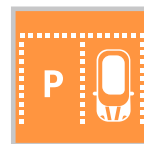
INTERCHANGE



ROADS & MOTORWAYS



URBAN & RESIDENTIAL STREETS



CAR PARKS



BIKE & PEDESTRIAN PATHS



HIGHMAST LIGHTING



SECURITY LIGHTING



INDUSTRIAL HARBOUR



LOADING BAY



SQUARES & PEDESTRIAN AREAS