

Project 1

Partner for Contact:
Order No.:
Company:
Customer No.:

Date: 23.01.2024
Operator:



Operator
Telephone
Fax
e-Mail

Table of contents

Project 1

Project Cover	1
Table of contents	2
MIC OPTOELECTRONIC CO.,LTD MFL-G1000 MIC G SERIES LED FLOODLIGHT 1000W	
Luminaire Data Sheet	3
Exterior Scene 1	
Luminaire parts list	4
Luminaires (coordinates list)	5
Sport Luminaires (Coordinates List)	7
Calculation Grid (Coordinates List)	10
3D Rendering	11
False Color Rendering	12
Exterior Surfaces	
Soccer Field 1 Calculation Grid (PA)	
Summary	13
Isolines (E, Perpendicular)	14
Greyscale (E, Perpendicular)	15
Value Chart (E, Perpendicular)	16

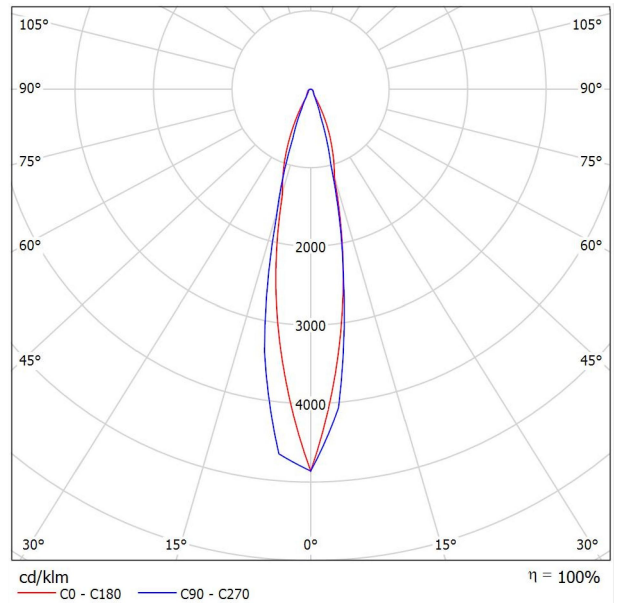


Operator
Telephone
Fax
e-Mail

MIC OPTOELECTRONIC CO.,LTD MFL-G1000 MIC G SERIES LED FLOODLIGHT 1000W / Luminaire Data Sheet

Luminous emittance 1:

See our luminaire catalog for an image of the luminaire.



Luminaire classification according to CIE: 100
CIE flux code: 89 95 99 100 101

Due to missing symmetry properties, no UGR table can be displayed for this luminaire.

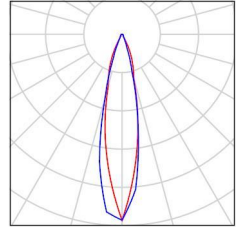


Operator
Telephone
Fax
e-Mail

Exterior Scene 1 / Luminaire parts list

48 Pieces MIC OPTOELECTRONIC CO.,LTD MFL-G1000
MIC G SERIES LED FLOODLIGHT 1000W
Article No.: MFL-G1000
Luminous flux (Luminaire): 148781 lm
Luminous flux (Lamps): 148430 lm
Luminaire Wattage: 998.6 W
Luminaire classification according to CIE: 100
CIE flux code: 89 95 99 100 101
Fitting: 1 x 5050 (Correction Factor 1.000).

See our luminaire
catalog for an image of
the luminaire.





Operator
 Telephone
 Fax
 e-Mail

Exterior Scene 1 / Luminaires (coordinates list)

MIC OPTOELECTRONIC CO.,LTD MFL-G1000 MIC G SERIES LED FLOODLIGHT 1000W
 148781 lm, 998.6 W, 1 x 1 x 5050 (Correction Factor 1.000).



No.	Position [m]			Rotation [°]		
	X	Y	Z	X	Y	Z
1	-65.450	-47.617	30.000	66.5	0.0	-76.1
2	65.450	-47.617	30.000	66.5	0.0	76.1
3	-65.450	47.617	30.000	66.5	0.0	-103.9
4	65.450	47.617	30.000	66.5	0.0	103.9
5	-67.902	-45.889	30.000	58.6	0.0	-24.1
6	67.902	-45.889	30.000	58.6	0.0	24.1
7	-67.902	45.889	30.000	58.6	0.0	-155.9
8	67.902	45.889	30.000	58.6	0.0	155.9
9	-66.267	-47.041	30.000	55.2	0.0	-62.2
10	66.267	-47.041	30.000	55.2	0.0	62.2
11	-66.267	47.041	30.000	55.2	0.0	-117.8
12	66.267	47.041	30.000	55.2	0.0	117.8
13	-67.085	-46.465	30.000	45.0	0.0	-49.4
14	67.085	-46.465	30.000	45.0	0.0	49.4
15	-67.085	46.465	30.000	45.0	0.0	-130.6
16	67.085	46.465	30.000	45.0	0.0	130.6
17	-65.450	-47.617	31.000	66.4	0.0	-71.3
18	65.450	-47.617	31.000	66.4	0.0	71.3
19	-65.450	47.617	31.000	66.4	0.0	-108.7
20	65.450	47.617	31.000	66.4	0.0	108.7
21	-67.902	-45.889	31.000	65.1	0.0	-38.6
22	67.902	-45.889	31.000	65.1	0.0	38.6
23	-67.902	45.889	31.000	65.1	0.0	-141.4
24	67.902	45.889	31.000	65.1	0.0	141.4
25	-67.085	-46.465	31.000	67.9	0.0	-45.5
26	67.085	-46.465	31.000	67.9	0.0	45.5
27	-67.085	46.465	31.000	67.9	0.0	-134.5
28	67.085	46.465	31.000	67.9	0.0	134.5

Operator
Telephone
Fax
e-Mail

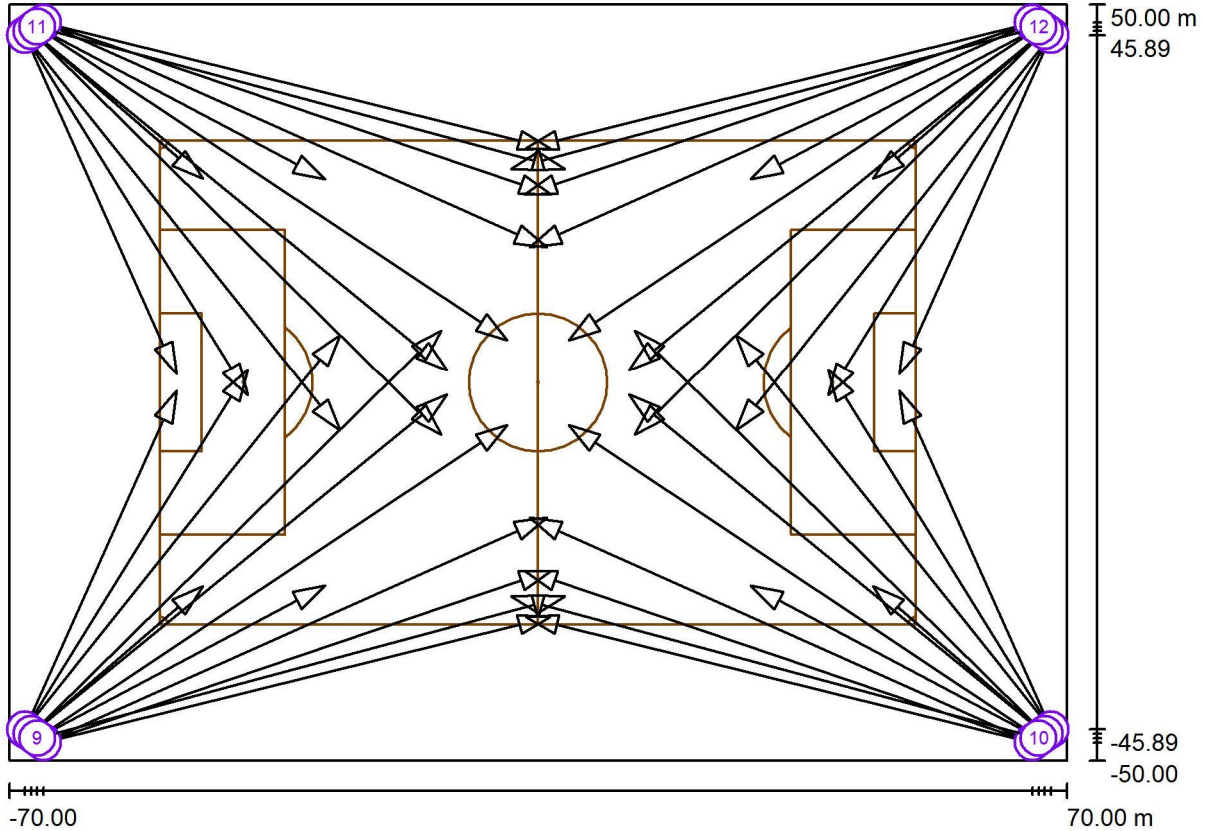
Exterior Scene 1 / Luminaires (coordinates list)

No.	Position [m]			Rotation [°]		
	X	Y	Z	X	Y	Z
29	-66.267	-47.041	31.000	67.5	0.0	-56.4
30	66.267	-47.041	31.000	67.5	0.0	56.4
31	-66.267	47.041	31.000	67.5	0.0	-123.6
32	66.267	47.041	31.000	67.5	0.0	123.6
33	-65.450	-47.617	32.000	66.3	0.0	-66.0
34	65.450	-47.617	32.000	66.3	0.0	66.0
35	-65.450	47.617	32.000	66.3	0.0	-114.0
36	65.450	47.617	32.000	66.3	0.0	114.0
37	-67.902	-45.889	32.000	60.2	0.0	-31.8
38	67.902	-45.889	32.000	60.2	0.0	31.8
39	-67.902	45.889	32.000	60.2	0.0	-148.2
40	67.902	45.889	32.000	60.2	0.0	148.2
41	-67.085	-46.465	32.000	65.7	0.0	-50.8
42	67.085	-46.465	32.000	65.7	0.0	50.8
43	-67.085	46.465	32.000	65.7	0.0	-129.2
44	67.085	46.465	32.000	65.7	0.0	129.2
45	-66.267	-47.041	32.000	66.1	0.0	-75.0
46	66.267	-47.041	32.000	66.1	0.0	75.0
47	-66.267	47.041	32.000	66.1	0.0	-105.0
48	66.267	47.041	32.000	66.1	0.0	105.0



Operator
Telephone
Fax
e-Mail

Exterior Scene 1 / Sport Luminaires (Coordinates List)



Scale 1 : 1001

List of the Sport Luminaires

Luminaire	Index	Position [m]			Aiming Point [m]			Angle [°]	Alignment	Pole
		X	Y	Z	X	Y	Z			
MIC OPTOELECTRONIC CO.,LTD MFL-G1000 MIC G SERIES LED FLOODLIGHT 1000W	1	-65.450	-47.617	30.000	1.614	-31.000	0.000	23.5	(C 90, G IMax)	Pole Position 1
MIC OPTOELECTRONIC CO.,LTD MFL-G1000 MIC G SERIES LED FLOODLIGHT 1000W	2	65.450	-47.617	30.000	-1.614	-31.000	0.000	23.5	(C 90, G IMax)	/
MIC OPTOELECTRONIC CO.,LTD MFL-G1000 MIC G SERIES LED FLOODLIGHT 1000W	3	-65.450	47.617	30.000	1.614	31.000	0.000	23.5	(C 90, G IMax)	/
MIC OPTOELECTRONIC CO.,LTD MFL-G1000 MIC G SERIES LED FLOODLIGHT 1000W	4	65.450	47.617	30.000	-1.614	31.000	0.000	23.5	(C 90, G IMax)	/



Operator
 Telephone
 Fax
 e-Mail

Exterior Scene 1 / Sport Luminaires (Coordinates List)

List of the Sport Luminaires

Luminaire	Index	Position [m]			Aiming Point [m]			Angle [°]	Alignment	Pole
		X	Y	Z	X	Y	Z			
MIC OPTOELECTRONIC CO.,LTD MFL-G1000 MIC G SERIES LED FLOODLIGHT 1000W	5	-67.902	-45.889	30.000	-47.837	-1.110	0.000	31.4	(C 90, G IMax)	Pole Position 1
MIC OPTOELECTRONIC CO.,LTD MFL-G1000 MIC G SERIES LED FLOODLIGHT 1000W	6	67.902	-45.889	30.000	47.837	-1.110	0.000	31.4	(C 90, G IMax)	/
MIC OPTOELECTRONIC CO.,LTD MFL-G1000 MIC G SERIES LED FLOODLIGHT 1000W	7	-67.902	45.889	30.000	-47.837	1.110	0.000	31.4	(C 90, G IMax)	/
MIC OPTOELECTRONIC CO.,LTD MFL-G1000 MIC G SERIES LED FLOODLIGHT 1000W	8	67.902	45.889	30.000	47.837	1.110	0.000	31.4	(C 90, G IMax)	/
MIC OPTOELECTRONIC CO.,LTD MFL-G1000 MIC G SERIES LED FLOODLIGHT 1000W	9	-66.267	-47.041	30.000	-28.130	-26.897	0.000	34.8	(C 90, G IMax)	Pole Position 1
MIC OPTOELECTRONIC CO.,LTD MFL-G1000 MIC G SERIES LED FLOODLIGHT 1000W	10	66.267	-47.041	30.000	28.130	-26.897	0.000	34.8	(C 90, G IMax)	/
MIC OPTOELECTRONIC CO.,LTD MFL-G1000 MIC G SERIES LED FLOODLIGHT 1000W	11	-66.267	47.041	30.000	-28.130	26.897	0.000	34.8	(C 90, G IMax)	/
MIC OPTOELECTRONIC CO.,LTD MFL-G1000 MIC G SERIES LED FLOODLIGHT 1000W	12	66.267	47.041	30.000	28.130	26.897	0.000	34.8	(C 90, G IMax)	/
MIC OPTOELECTRONIC CO.,LTD MFL-G1000 MIC G SERIES LED FLOODLIGHT 1000W	13	-67.085	-46.465	30.000	-44.348	-26.959	0.000	45.0	(C 90, G IMax)	Pole Position 1
MIC OPTOELECTRONIC CO.,LTD MFL-G1000 MIC G SERIES LED FLOODLIGHT 1000W	14	67.085	-46.465	30.000	44.348	-26.959	0.000	45.0	(C 90, G IMax)	/
MIC OPTOELECTRONIC CO.,LTD MFL-G1000 MIC G SERIES LED FLOODLIGHT 1000W	15	-67.085	46.465	30.000	-44.348	26.959	0.000	45.0	(C 90, G IMax)	/
MIC OPTOELECTRONIC CO.,LTD MFL-G1000 MIC G SERIES LED FLOODLIGHT 1000W	16	67.085	46.465	30.000	44.348	26.959	0.000	45.0	(C 90, G IMax)	/
MIC OPTOELECTRONIC CO.,LTD MFL-G1000 MIC G SERIES LED FLOODLIGHT 1000W	1	-65.450	-47.617	31.000	1.769	-24.877	0.000	23.6	(C 90, G IMax)	Pole Position 1
MIC OPTOELECTRONIC CO.,LTD MFL-G1000 MIC G SERIES LED FLOODLIGHT 1000W	2	65.450	-47.617	31.000	-1.769	-24.877	0.000	23.6	(C 90, G IMax)	/

CO.,LTD MFL-G1000 MIC G SERIES LED FLOODLIGHT 1000W MIC OPTOELECTRONIC	4	65.450	47.617	32.000	-1.149	17.902	0.000	23.7	(C 90, G IMax)	/
CO.,LTD MFL-G1000 MIC G SERIES LED FLOODLIGHT 1000W MIC OPTOELECTRONIC	5	-67.902	-45.889	32.000	-38.383	1.685	0.000	29.8	(C 90, G IMax)	Pole Position 1
CO.,LTD MFL-G1000 MIC G SERIES LED FLOODLIGHT 1000W MIC OPTOELECTRONIC	6	67.902	-45.889	32.000	38.383	1.685	0.000	29.8	(C 90, G IMax)	/
CO.,LTD MFL-G1000 MIC G SERIES LED FLOODLIGHT 1000W MIC OPTOELECTRONIC	7	-67.902	45.889	32.000	-38.383	-1.685	0.000	29.8	(C 90, G IMax)	/
CO.,LTD MFL-G1000 MIC G SERIES LED FLOODLIGHT 1000W MIC OPTOELECTRONIC	8	67.902	45.889	32.000	38.383	-1.685	0.000	29.8	(C 90, G IMax)	/



Operator
Telephone
Fax
e-Mail

Exterior Scene 1 / Sport Luminaires (Coordinates List)

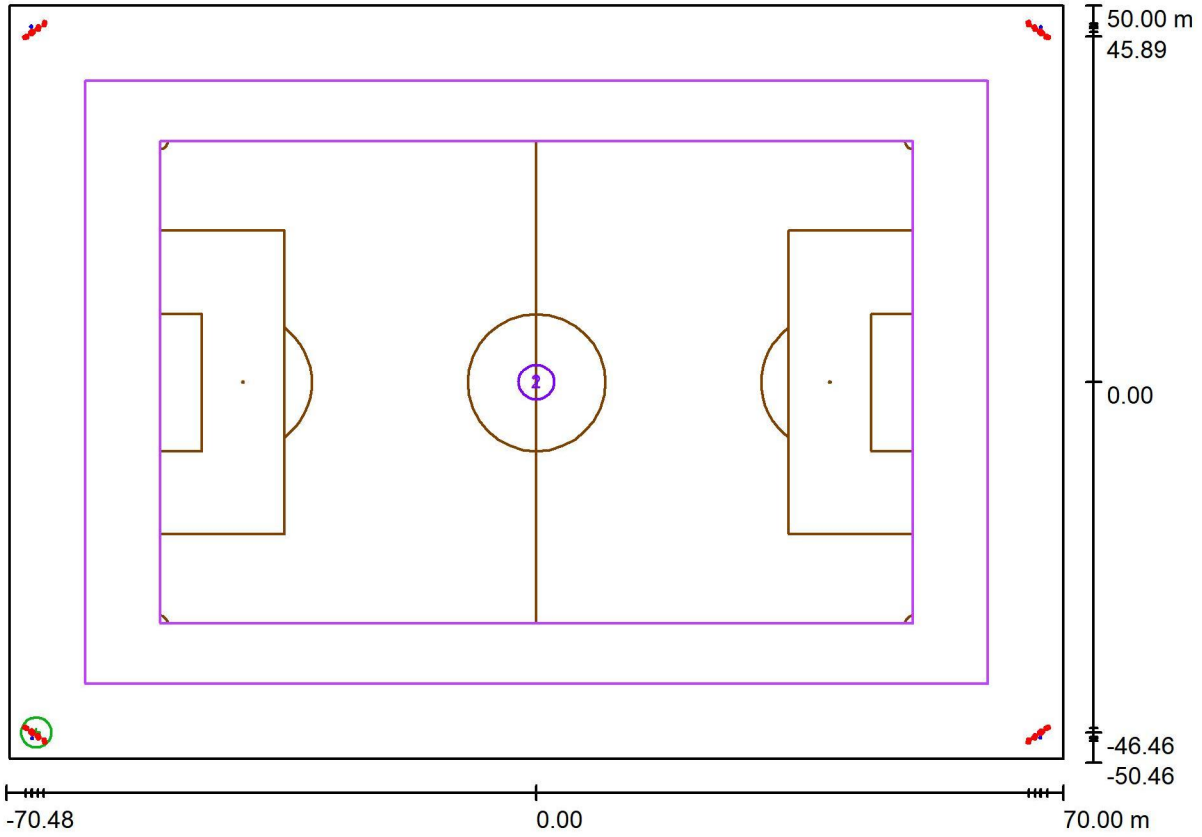
List of the Sport Luminaires

Luminaire	Index	Position [m]			Aiming Point [m]			Angle [°]	Alignment	Pole
		X	Y	Z	X	Y	Z			
MIC OPTOELECTRONIC CO.,LTD MFL-G1000 MIC G SERIES LED FLOODLIGHT 1000W	13	-67.085	-46.465	32.000	-12.073	-1.612	0.000	24.3	(C 90, G IMax)	Pole Position 1
MIC OPTOELECTRONIC CO.,LTD MFL-G1000 MIC G SERIES LED FLOODLIGHT 1000W	14	67.085	-46.465	32.000	12.073	-1.612	0.000	24.3	(C 90, G IMax)	/
MIC OPTOELECTRONIC CO.,LTD MFL-G1000 MIC G SERIES LED FLOODLIGHT 1000W	15	-67.085	46.465	32.000	-12.073	1.612	0.000	24.3	(C 90, G IMax)	/
MIC OPTOELECTRONIC CO.,LTD MFL-G1000 MIC G SERIES LED FLOODLIGHT 1000W	16	67.085	46.465	32.000	12.073	1.612	0.000	24.3	(C 90, G IMax)	/
MIC OPTOELECTRONIC CO.,LTD MFL-G1000 MIC G SERIES LED FLOODLIGHT 1000W	9	-66.267	-47.041	32.000	3.567	-28.289	0.000	23.9	(C 90, G IMax)	Pole Position 1
MIC OPTOELECTRONIC CO.,LTD MFL-G1000 MIC G SERIES LED FLOODLIGHT 1000W	10	66.267	-47.041	32.000	-3.567	-28.289	0.000	23.9	(C 90, G IMax)	/
MIC OPTOELECTRONIC CO.,LTD MFL-G1000 MIC G SERIES LED FLOODLIGHT 1000W	11	-66.267	47.041	32.000	3.567	28.289	0.000	23.9	(C 90, G IMax)	/
MIC OPTOELECTRONIC CO.,LTD MFL-G1000 MIC G SERIES LED FLOODLIGHT 1000W	12	66.267	47.041	32.000	-3.567	28.289	0.000	23.9	(C 90, G IMax)	/



Operator
Telephone
Fax
e-Mail

Exterior Scene 1 / Calculation Grid (Coordinates List)



Scale 1 : 1005

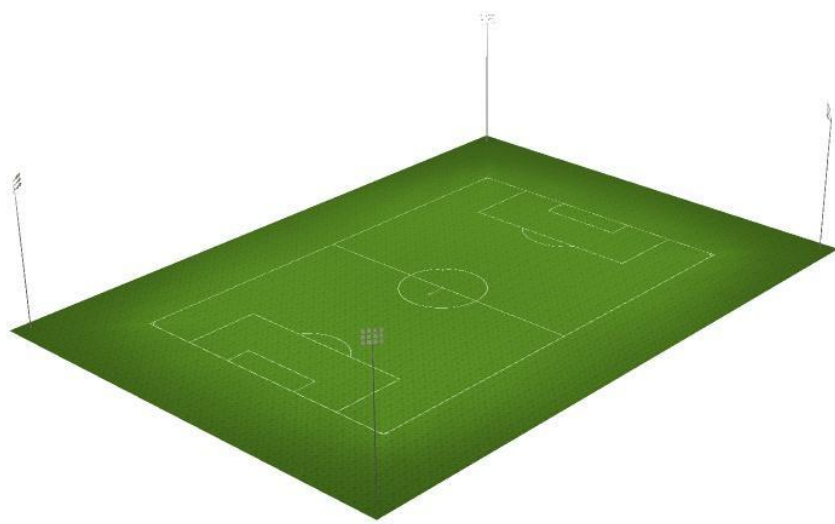
List of the Calculation Grids

No.	Designation	Position [m]			Size [m]		Rotation [°]		
		X	Y	Z	L	W	X	Y	Z
1	Soccer Field 1 Calculation Grid (PA)	0.000	0.000	0.000	100.000	64.000	0.0	0.0	0.0
2	Soccer Field 1 Calculation Grid (TA)	0.000	0.000	0.000	120.000	80.000	0.0	0.0	0.0



Operator
Telephone
Fax
e-Mail

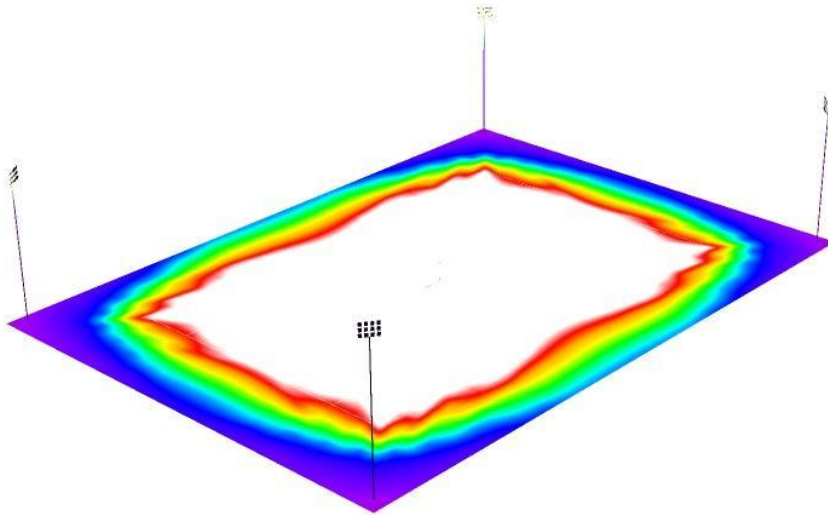
Exterior Scene 1 / 3D Rendering





Operator
Telephone
Fax
e-Mail

Exterior Scene 1 / False Color Rendering



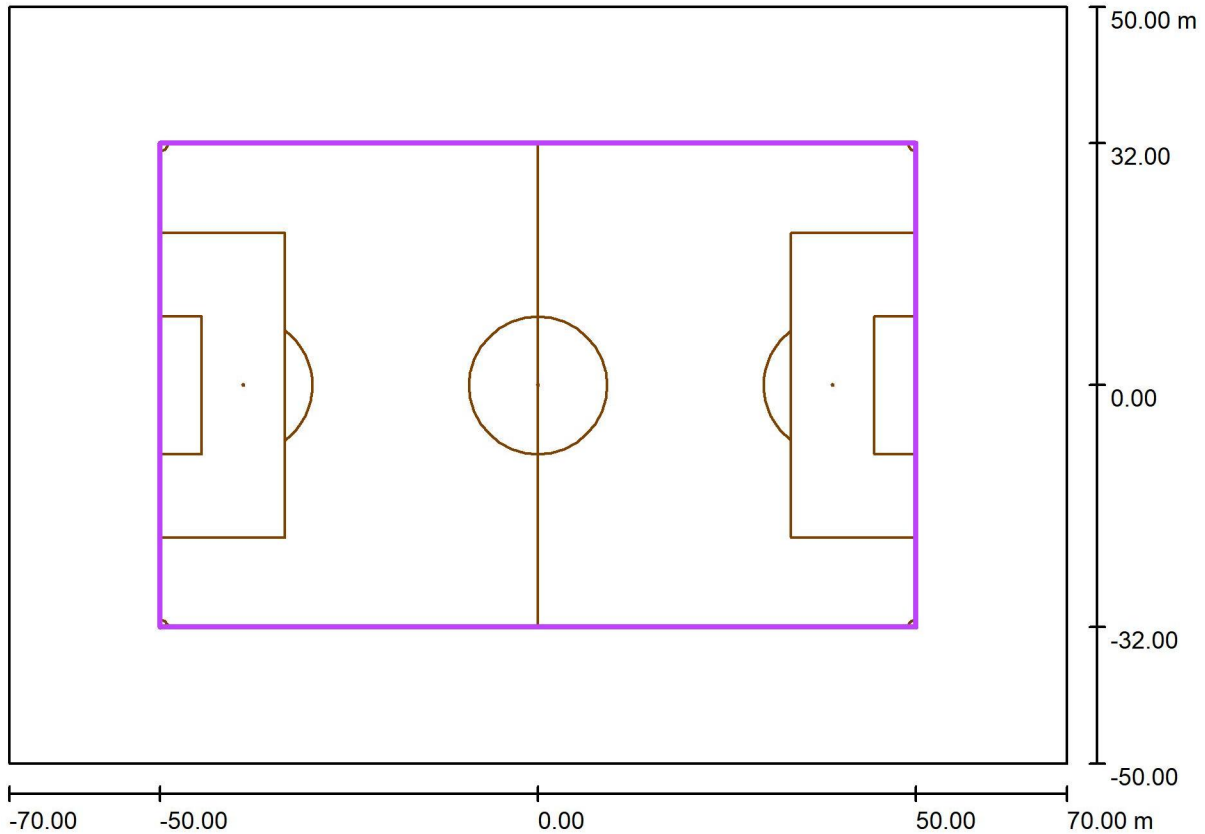
0 50 100 150 200 250 300 350 400

lx



Operator
 Telephone
 Fax
 e-Mail

Exterior Scene 1 / Soccer Field 1 Calculation Grid (PA) / Summary



Scale 1 : 1001

Position: (0.000 m, 0.000 m, 0.000 m)
 Size: (100.000 m, 64.000 m)
 Rotation: (0.0°, 0.0°, 0.0°)
 Type: Normal, Grid: 19 x 13 Points
 Belongs to the following sport arena: Soccer Field 1

Results overview

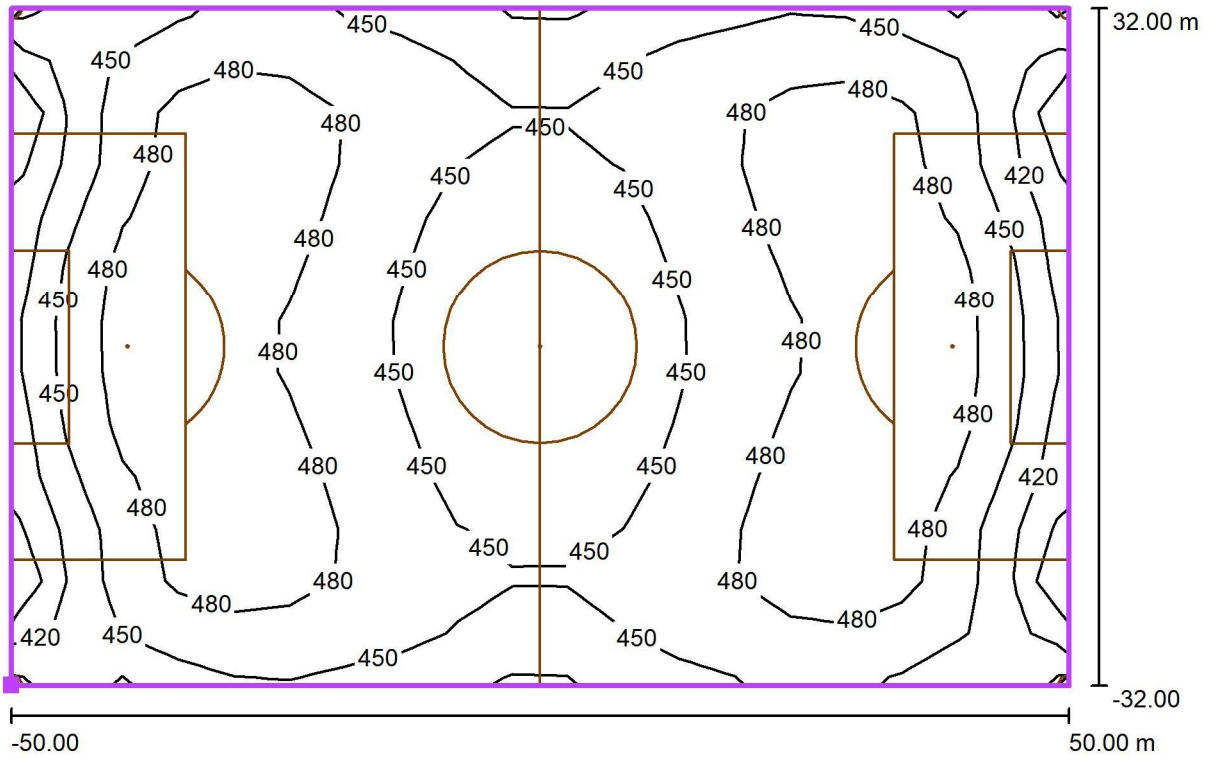
No.	Type	E_{av} [lx]	E_{min} [lx]	E_{max} [lx]	$u0$	E_{min} / E_{max}	$E_{h\ m} / E_m$	H [m]	Camera
1	perpendicular	461	380	502	0.82	0.76	/	0.000	/

$E_{h\ m} / E_m$ = Relationship between middle horizontal and vertical illuminance, H = Measuring Height



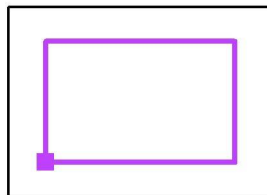
Operator
Telephone
Fax
e-Mail

Exterior Scene 1 / Soccer Field 1 Calculation Grid (PA) / Isolines (E, Perpendicular)



Values in Lux, Scale 1 : 715

Position of surface in external scene:
Marked point: (-50.000 m, -32.000 m,
0.000 m)



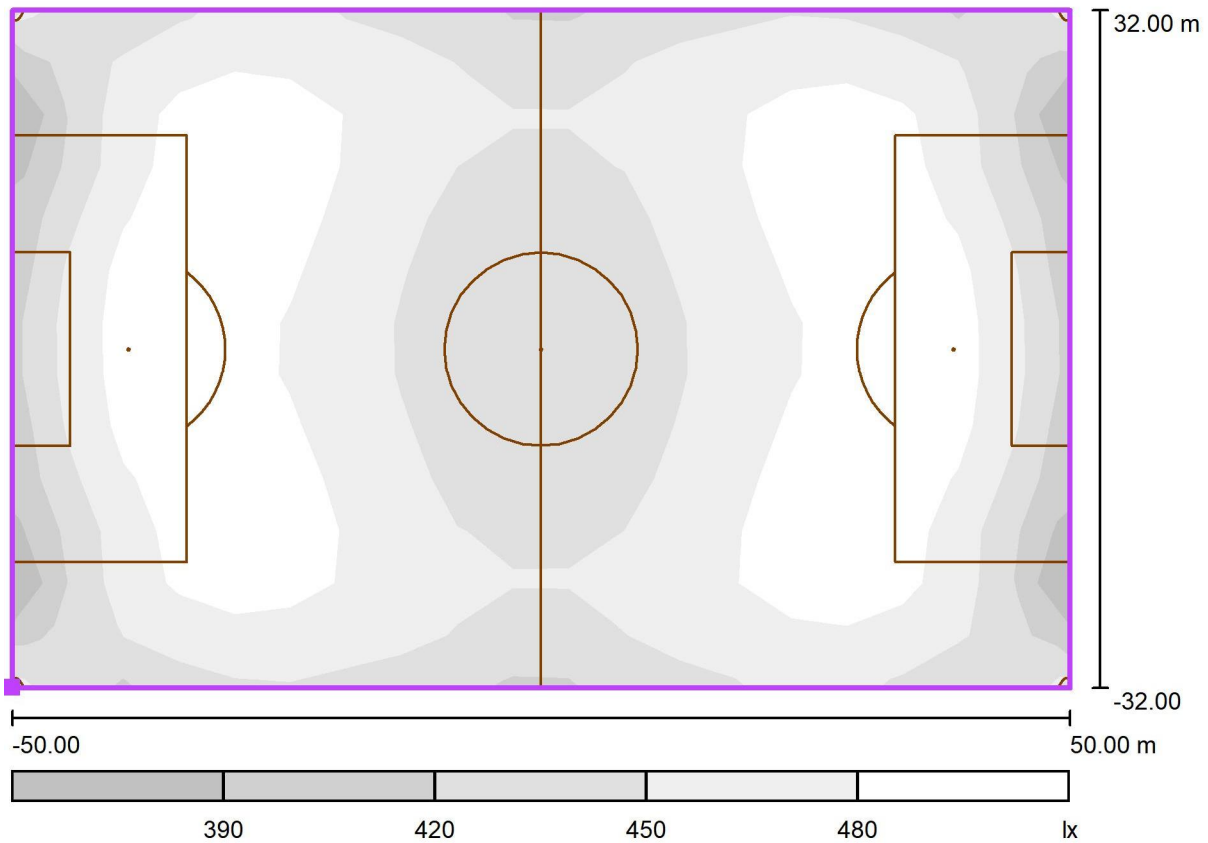
Grid: 19 x 13 Points

E_{av} [lx]	E_{min} [lx]	E_{max} [lx]	u0	E_{min} / E_{max}
461	380	502	0.82	0.76



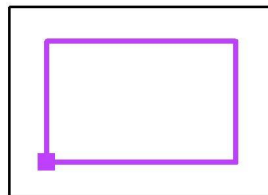
Operator
Telephone
Fax
e-Mail

Exterior Scene 1 / Soccer Field 1 Calculation Grid (PA) / Greyscale (E, Perpendicular)



Scale 1 : 715

Position of surface in external scene:
Marked point: (-50.000 m, -32.000 m, 0.000 m)



Grid: 19 x 13 Points

E_{av} [lx]
461

E_{min} [lx]
380

E_{max} [lx]
502

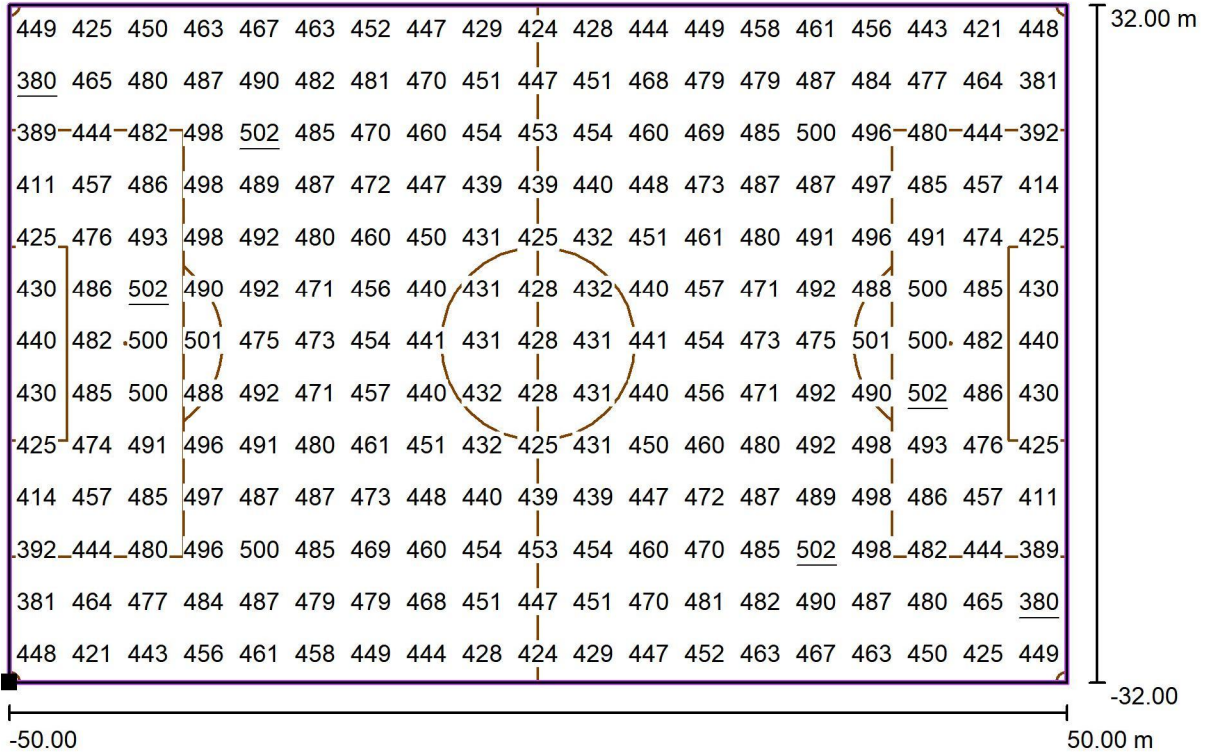
u_0
0.82

E_{min} / E_{max}
0.76



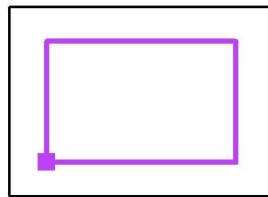
Operator
Telephone
Fax
e-Mail

Exterior Scene 1 / Soccer Field 1 Calculation Grid (PA) / Value Chart (E, Perpendicular)



Values in Lux, Scale 1 : 715

Position of surface in external scene:
Marked point: (-50.000 m, -32.000 m, 0.000 m)



Grid: 19 x 13 Points

E_{av} [lx]
461

E_{min} [lx]
380

E_{max} [lx]
502

u_0
0.82

E_{min} / E_{max}
0.76