

# MIC 300W LED STREET LIGHT

LIGHT THE WORLD



ITEM No.: MSL-F300-3

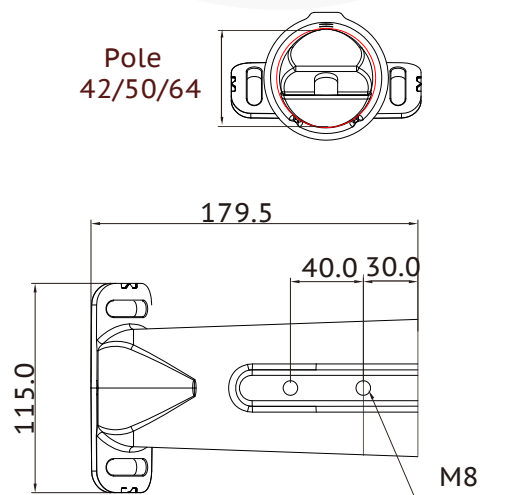
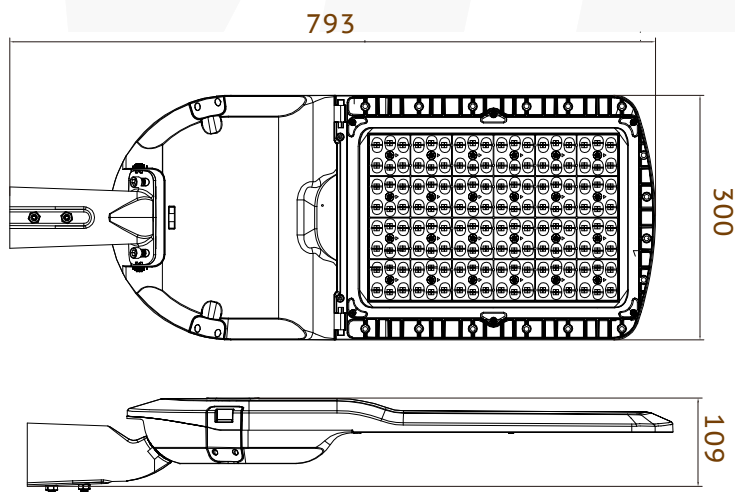
## Electrical Specifications

|                         |  |
|-------------------------|--|
| • Led Power             | 300w   |
| • IP Grade              | IP66   |
| • IK                    | IK09   |
| • Input Voltage         | 85-305V AC & 12V/24V DC                            |
| • Operating Temperature | -40°C to +50°C                                     |
| • Driver Brand          | Meanwell / Moso / Sosen                            |
| • Power Factor (PF)     | >0.95  |
| • Sensor                | Photocell (optional)                               |
| • Auto cut off          | Open driver case auto cut off power                |
| • Certification         | CE,ROHS,TUV,ETL,TUV,CB,IECEE, ENEC,UKCA,SASO/SABER |

## Photometric & Packing Specifications

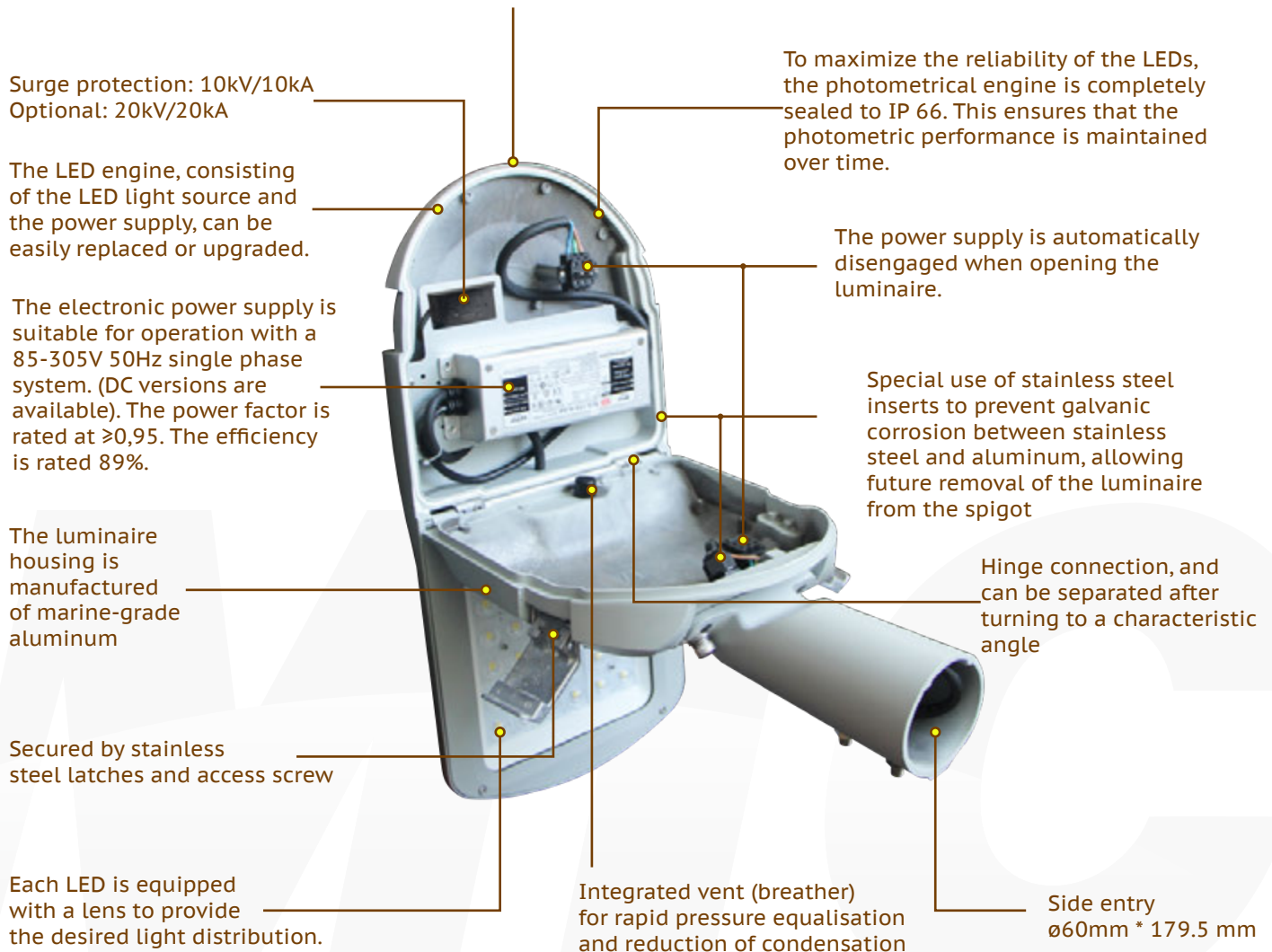
|                    |                |                |                 |                                |
|--------------------|----------------|----------------|-----------------|--------------------------------|
| • Led Lamp         | SMD 5050       | <b>PHILIPS</b> | • Guarantee     | MW 7 years, Moso/Sosen 5 years |
| • Lumen Output     | >51000LM       |                | • CCT           | 2700k~6500k                    |
| • Light Efficiency | 170lm/w        |                | • Fitment Baser | Slip fitter                    |
| • Led Quantity     | 160pcs LEDs    |                | • Material      | Aluminum+Glass+Optical Lens    |
| • Beam Angle       | Type (2, 3, 4) |                | • NW/GW         | 7.2kg/8.2kg                    |
| • Life span        | >50000 hours   |                | • Product size  | 793*300*130mm                  |
| • CRI              | >80            |                | • Carton size   | 864*355*158mm, 1pcs/CTN        |

## Product size(unit:mm)

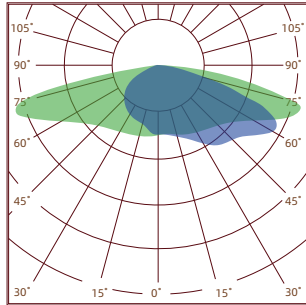


## Key Features

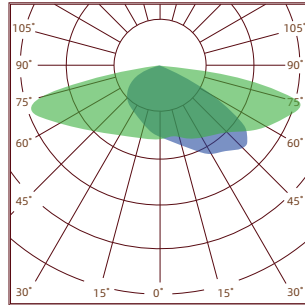
The luminaire design is based on a three-compartment concept, consisting of an LED engine, power supply and spigot compartment. This allows for easy installation without the risk of jeopardizing the IP integrity of the luminaire. Furthermore, the hinging concept allows the easy replacement of the LED engine in case of future upgrades or maintenance.



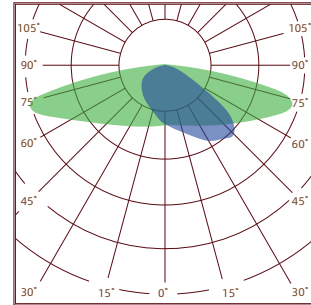
## Spectrum (Four lens available)



Type II

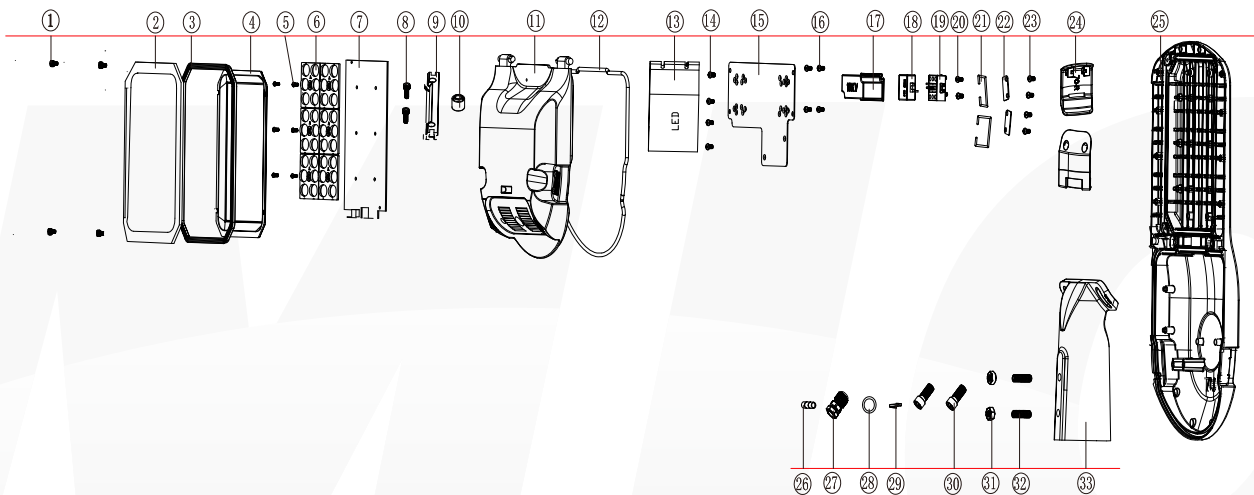


Type III



Type IV

## Explosion structure



## Application



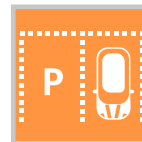
INTERCHANGE



ROADS & MOTORWAYS



URBAN & RESIDENTIAL STREETS



CAR PARKS



BIKE & PEDESTRIAN PATHS



HIGHMAST LIGHTING



SECURITY LIGHTING



INDUSTRIAL HARBOUR



LOADING BAY



SQUARES & PEDESTRIAN AREAS