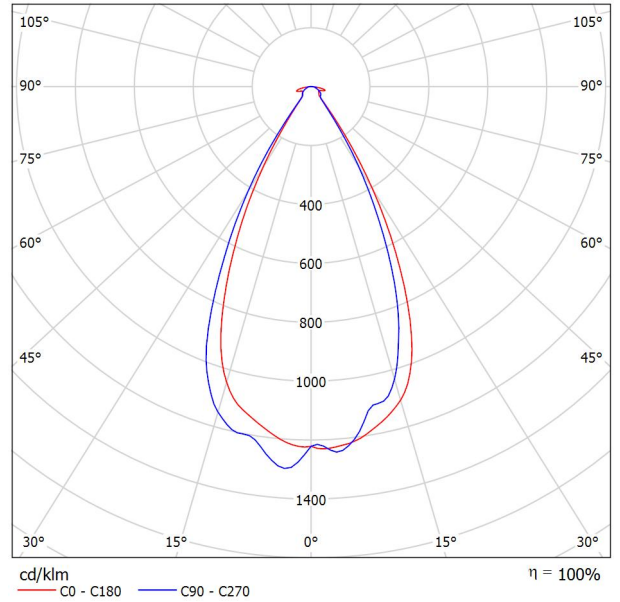


Operator
 Telephone
 Fax
 e-Mail

MIC OPTOELECTRONIC CO.,LTD MFL-G300 / Luminaire Data Sheet

Luminous emittance 1:

See our luminaire catalog for an image of the luminaire.



Luminaire classification according to CIE: 100
 CIE flux code: 86 92 97 100 100

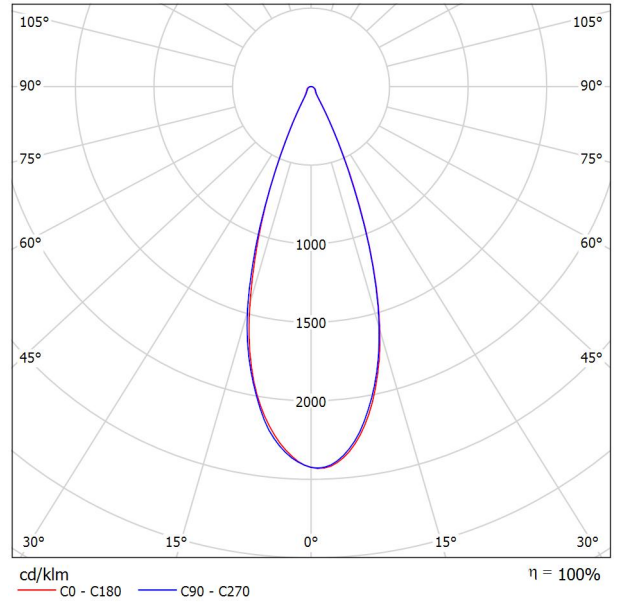
Due to missing symmetry properties, no UGR table can be displayed for this luminaire.

Operator
 Telephone
 Fax
 e-Mail

MIC OPTOELECTRONIC CO.,LTD MFL-G300 / Luminaire Data Sheet

Luminous emittance 1:

See our luminaire catalog for an image of the luminaire.

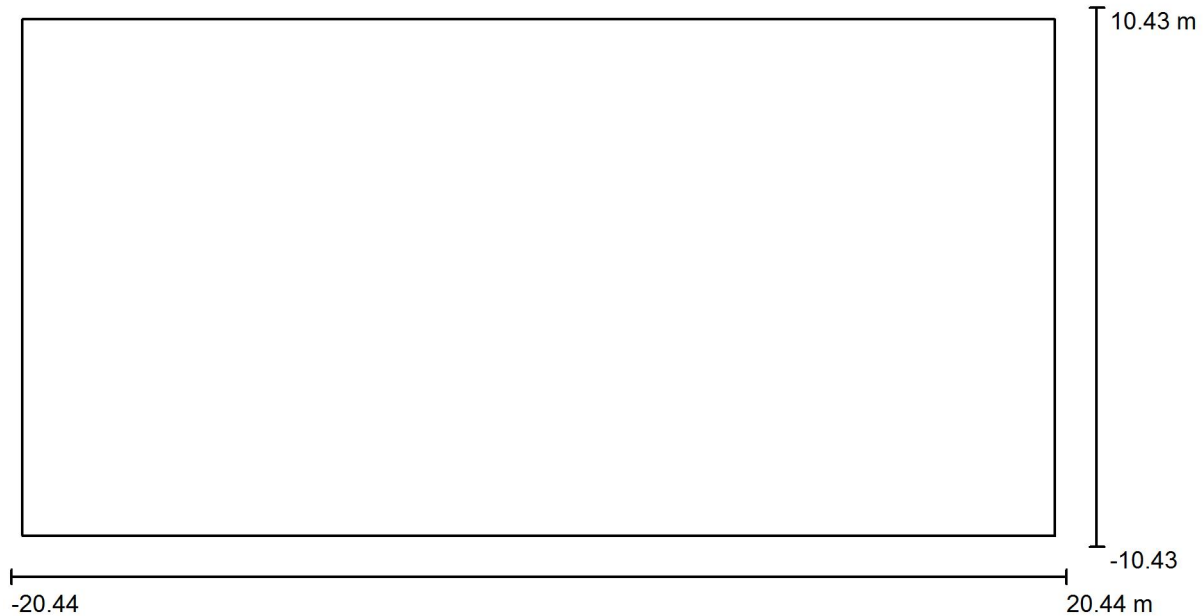


Luminaire classification according to CIE: 100
 CIE flux code: 90 96 99 100 100

Due to missing symmetry properties, no UGR table can be displayed for this luminaire.

Operator
Telephone
Fax
e-Mail

户外场景 1 / Planning data



Maintenance factor: 0.80, ULR (Upward Light Ratio): 4.0%

Scale 1:293

Luminaire Parts List

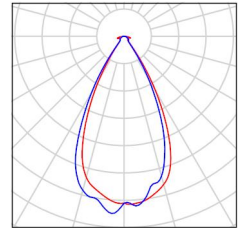
No.	Pieces	Designation (Correction Factor)	Φ (Luminaire) [lm]	Φ (Lamps) [lm]	P [W]
1	4	MIC OPTOELECTRONIC CO.,LTD MFL-G300 (1.000)	46367	46367	291.1
2	4	MIC OPTOELECTRONIC CO.,LTD MFL-G300 (1.000)	50410	50418	300.5
Total:			387104	Total: 387140	2366.4

Operator
Telephone
Fax
e-Mail

户外场景 1 / Luminaire parts list

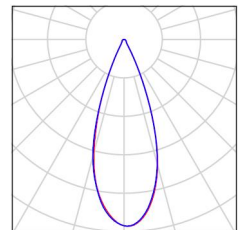
4 Pieces MIC OPTOELECTRONIC CO.,LTD MFL-G300
Article No.: MFL-G300
Luminous flux (Luminaire): 46367 lm
Luminous flux (Lamps): 46367 lm
Luminaire Wattage: 291.1 W
Luminaire classification according to CIE: 100
CIE flux code: 86 92 97 100 100
Fitting: 1 x 5050 (Correction Factor 1.000).

See our luminaire catalog for an image of the luminaire.



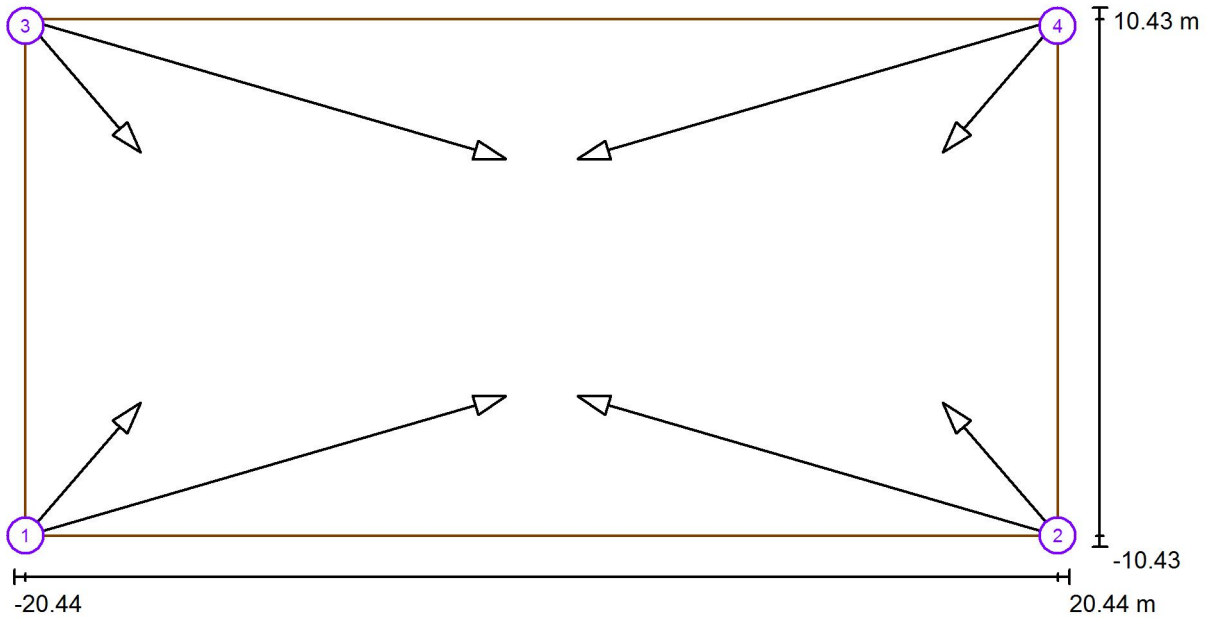
4 Pieces MIC OPTOELECTRONIC CO.,LTD MFL-G300
Article No.: MFL-G300
Luminous flux (Luminaire): 50410 lm
Luminous flux (Lamps): 50418 lm
Luminaire Wattage: 300.5 W
Luminaire classification according to CIE: 100
CIE flux code: 90 96 99 100 100
Fitting: 1 x 5050 (Correction Factor 1.000).

See our luminaire catalog for an image of the luminaire.



Operator
Telephone
Fax
e-Mail

户外场景 1 / Sport Luminaires (Coordinates List)



Scale 1 : 293

List of the Sport Luminaires

Luminaire	Index	Position [m]			Aiming Point [m]			Angle [°]	Alignment	Pole
		X	Y	Z	X	Y	Z			
MIC OPTOELECTRONIC CO.,LTD MFL-G300	1	-20.000	-10.000	10.000	-15.543	-4.855	0.000	55.8	(C 90, G IMax)	/
MIC OPTOELECTRONIC CO.,LTD MFL-G300	2	20.000	-10.000	10.000	15.543	-4.855	0.000	55.8	(C 90, G IMax)	/
MIC OPTOELECTRONIC CO.,LTD MFL-G300	3	-20.000	10.000	10.000	-15.543	4.855	0.000	55.8	(C 90, G IMax)	/
MIC OPTOELECTRONIC CO.,LTD MFL-G300	4	20.000	10.000	10.000	15.543	4.855	0.000	55.8	(C 90, G IMax)	/

Operator
Telephone
Fax
e-Mail

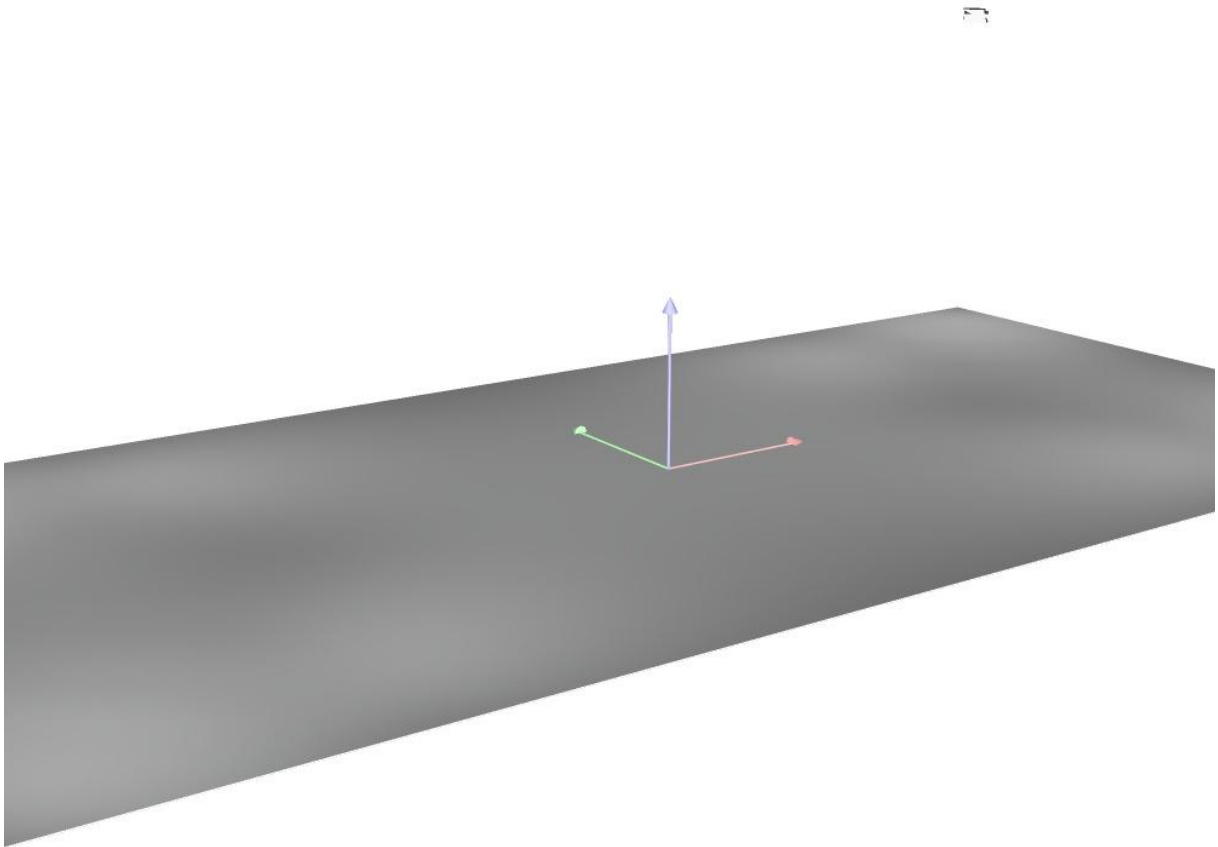
户外场景 1 / Sport Luminaires (Coordinates List)

List of the Sport Luminaires

Luminaire	Index	Position [m]			Aiming Point [m]			Angle [°]	Alignment	Pole
		X	Y	Z	X	Y	Z			
MIC OPTOELECTRONIC CO.,LTD MFL-G300	1	-20.000	-10.000	10.000	-1.391	-4.606	0.000	27.3	(C 90, G IMax)	/
MIC OPTOELECTRONIC CO.,LTD MFL-G300	2	20.000	-10.000	10.000	1.391	-4.606	0.000	27.3	(C 90, G IMax)	/
MIC OPTOELECTRONIC CO.,LTD MFL-G300	3	-20.000	10.000	10.000	-1.391	4.606	0.000	27.3	(C 90, G IMax)	/
MIC OPTOELECTRONIC CO.,LTD MFL-G300	4	20.000	10.000	10.000	1.391	4.606	0.000	27.3	(C 90, G IMax)	/

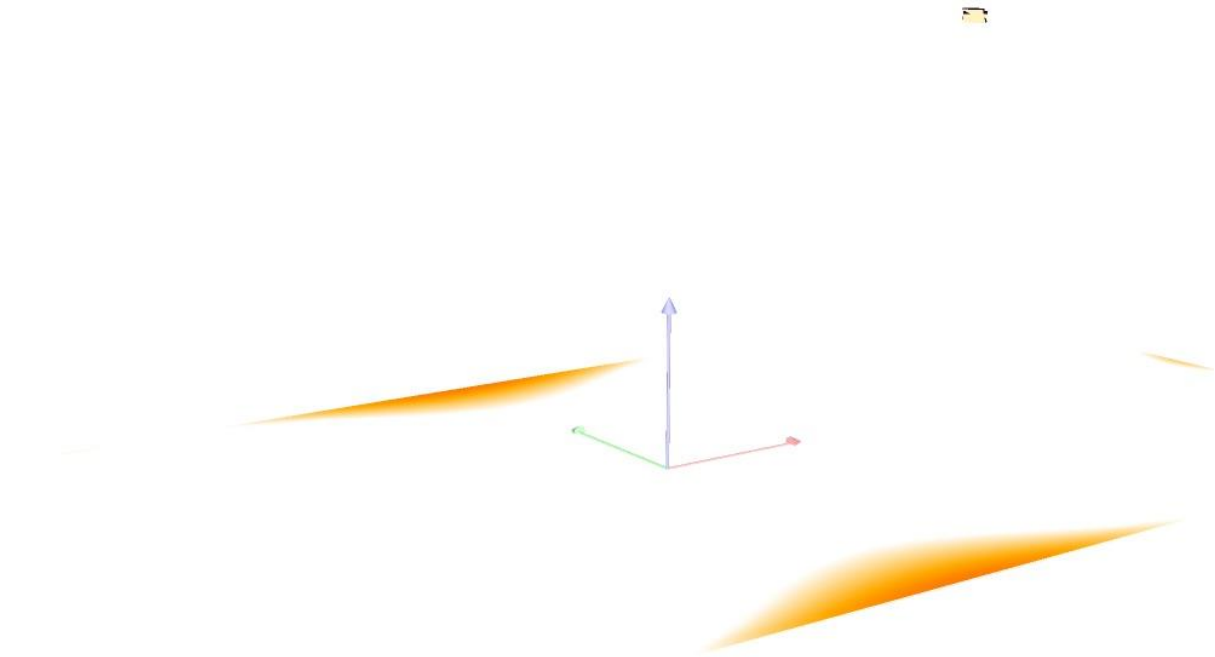
Operator
Telephone
Fax
e-Mail

户外场景 1 / 3D Rendering



Operator
Telephone
Fax
e-Mail

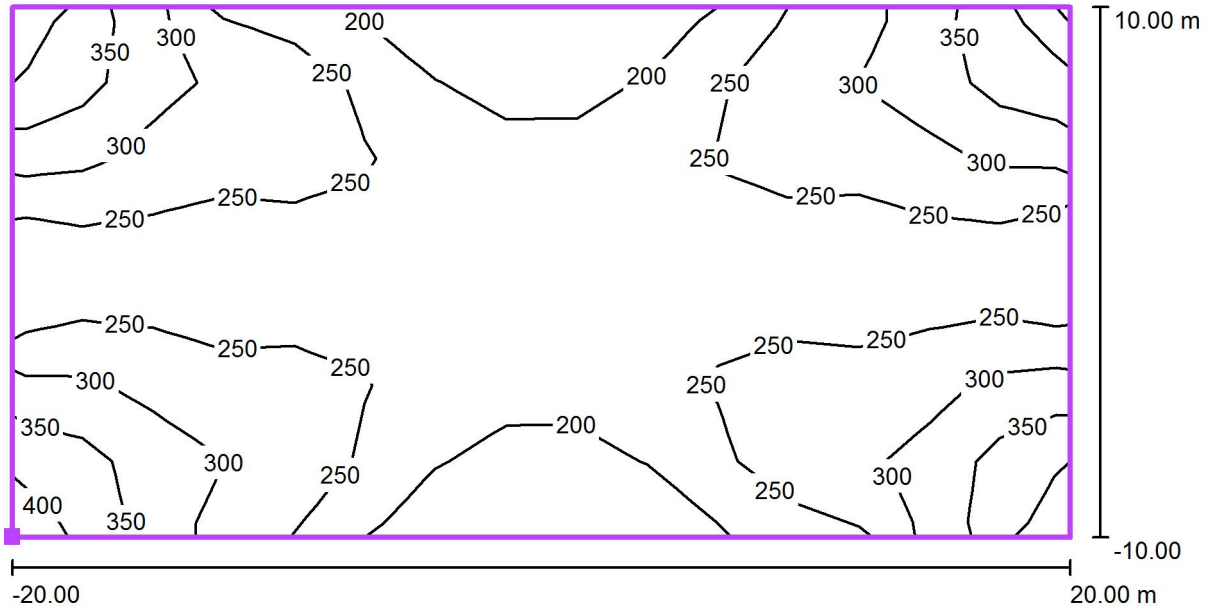
户外场景 1 / False Colour Rendering



lx

Operator
Telephone
Fax
e-Mail

户外场景 1 / 普通体育场 1 计算网格(PA) / Isolines (E, Perpendicular)



Values in Lux, Scale 1 : 286

Position of surface in external scene:
Marked point: (-20.000 m, -10.000 m,
0.000 m)



Grid: 15 x 7 Points

E_{av} [lx]	E_{min} [lx]	E_{max} [lx]	u0	E_{min} / E_{max}
261	160	398	0.62	0.40