

## Soccer Field

Partner for Contact:  
Order No.:  
Company:  
Customer No.:

Date: 18.10.2019  
Operator:



Operator  
Telephone  
Fax  
e-Mail

## Table of contents

<b>Soccer Field</b>	
Project Cover	1
Table of contents	2
Luminaire parts list	3
<b>Exterior Scene 1</b>	
Planning data	4
Luminaires (layout plan)	5
Sport Luminaires (Coordinates List)	6
3D Rendering	8
False Color Rendering	9
<b>Exterior Surfaces</b>	
<b>Soccer Field 1 Calculation Grid (PA)</b>	
Summary	10
Isolines (E, Perpendicular)	11
Greyscale (E, Perpendicular)	12
Value Chart (E, Perpendicular)	13

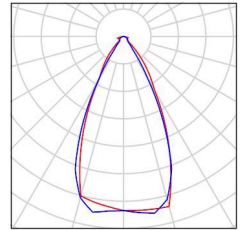


Operator  
Telephone  
Fax  
e-Mail

### Soccer Field / Luminaire parts list

18 Pieces MIC OPTOELECTRONIC CO.,LTD MFL-G720  
720w 60degree beam angle  
Article No.: MFL-G720  
Luminous flux (Luminaire): 114872 lm  
Luminous flux (Lamps): 114870 lm  
Luminaire Wattage: 714.0 W  
Luminaire classification according to DIN: A10  
CIE flux code: 88 94 99 100 100  
Fitting: 1 x 5050 (Correction Factor 1.000).

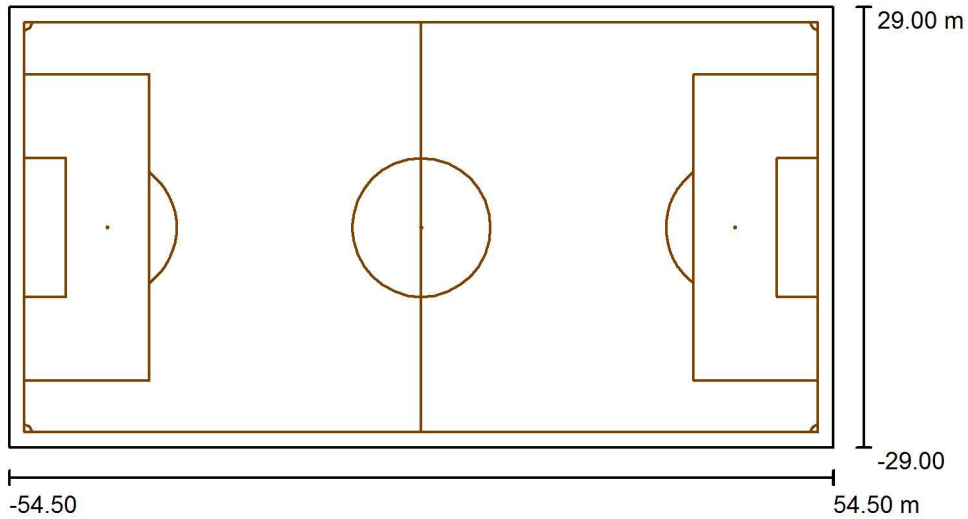
See our luminaire catalog for an image of the luminaire.





Operator  
Telephone  
Fax  
e-Mail

**Exterior Scene 1 / Planning data**



Light loss factor: 0.90, ULR (Upward Light Ratio): 4.0%

Scale 1:1000

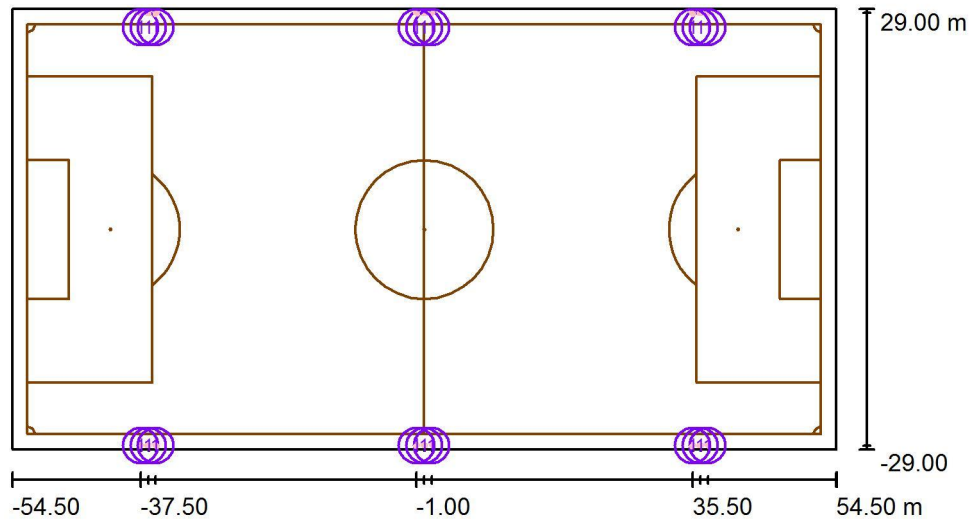
**Luminaire Parts List**

No.	Pieces	Designation (Correction Factor)	Φ (Luminaire) [lm]	Φ (Lamps) [lm]	P [W]
1	18	MIC OPTOELECTRONIC CO.,LTD MFL-G720 720w 60degree beam angle (1.000)	114872	114870	714.0
Total:			2067689	Total: 2067660	12851.8



Operator  
Telephone  
Fax  
e-Mail

**Exterior Scene 1 / Luminaires (layout plan)**



Scale 1 : 1000

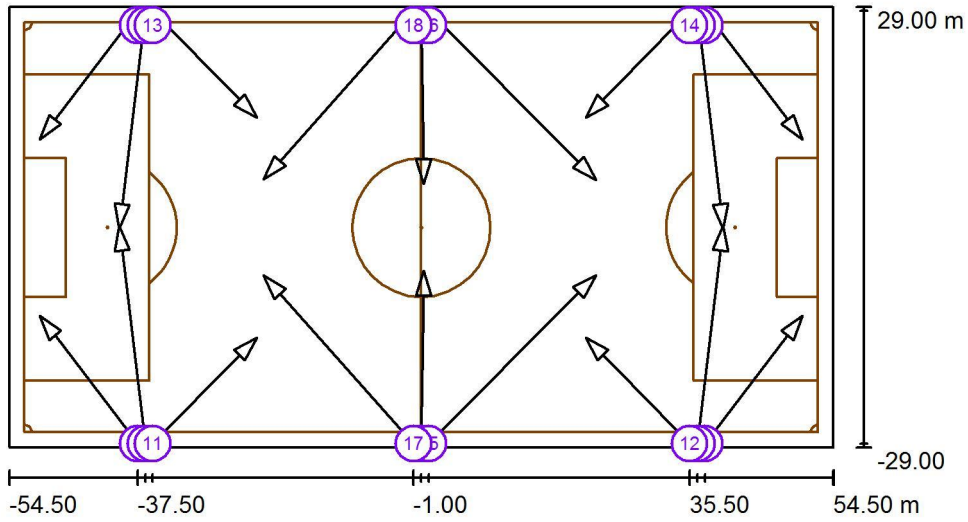
**Luminaire Parts List**

No.	Pieces	Designation
1	18	MIC OPTOELECTRONIC CO.,LTD MFL-G720 720w 60degree beam angle



Operator  
Telephone  
Fax  
e-Mail

Exterior Scene 1 / Sport Luminaires (Coordinates List)



Scale 1 : 1000

List of the Sport Luminaires

Luminaire	Index	Position [m]			Aiming Point [m]			Angle [°]	Alignment	Pole
		X	Y	Z	X	Y	Z			
MIC OPTOELECTRONIC CO.,LTD MFL-G720 720w 60degree beam angle	1	-37.500	-28.500	14.000	-50.428	-11.613	0.000	33.4	(C 90, G IMax)	/
MIC OPTOELECTRONIC CO.,LTD MFL-G720 720w 60degree beam angle	2	37.500	-28.500	14.000	50.428	-11.613	0.000	33.4	(C 90, G IMax)	/
MIC OPTOELECTRONIC CO.,LTD MFL-G720 720w 60degree beam angle	3	-37.500	28.500	14.000	-50.428	11.613	0.000	33.4	(C 90, G IMax)	/
MIC OPTOELECTRONIC CO.,LTD MFL-G720 720w 60degree beam angle	4	37.500	28.500	14.000	50.428	11.613	0.000	33.4	(C 90, G IMax)	/



Operator  
Telephone  
Fax  
e-Mail

### Exterior Scene 1 / Sport Luminaires (Coordinates List)

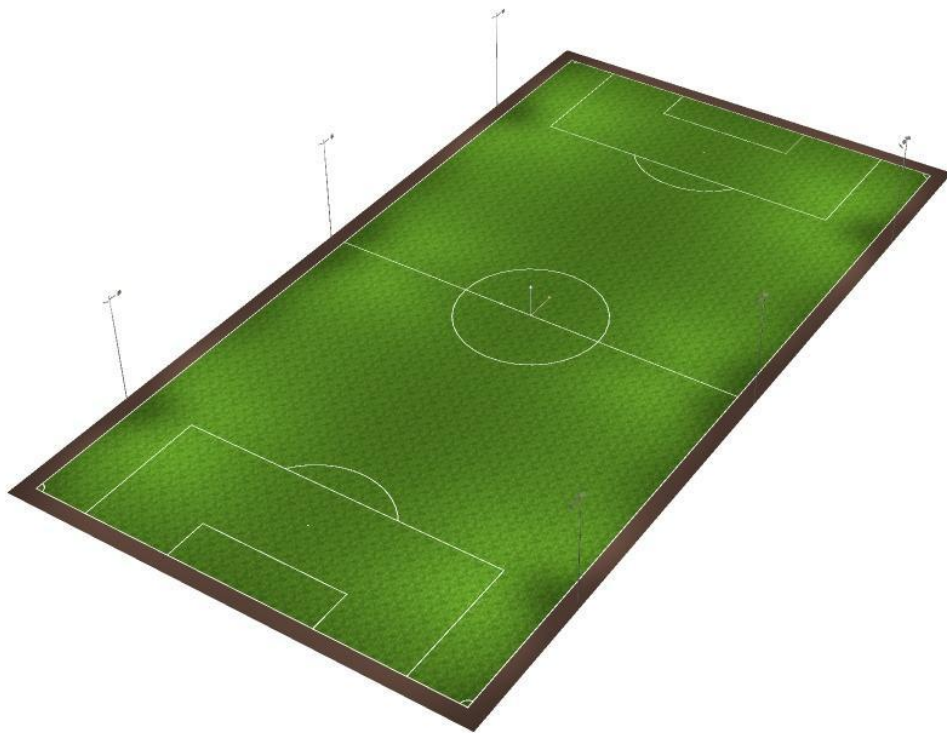
#### List of the Sport Luminaires

Luminaire	Index	Position [m]			Aiming Point [m]			Angle [°]	Alignment	Pole
		X	Y	Z	X	Y	Z			
MIC OPTOELECTRONIC CO.,LTD MFL-G720 720w 60degree beam angle	5	0.000	-28.500	14.000	0.342	-5.727	0.000	31.6	(C 90, G IMax)	/
MIC OPTOELECTRONIC CO.,LTD MFL-G720 720w 60degree beam angle	6	0.000	28.500	14.000	0.342	5.727	0.000	31.6	(C 90, G IMax)	/
MIC OPTOELECTRONIC CO.,LTD MFL-G720 720w 60degree beam angle	7	-36.500	-28.500	14.000	-39.946	0.199	0.000	25.8	(C 90, G IMax)	/
MIC OPTOELECTRONIC CO.,LTD MFL-G720 720w 60degree beam angle	8	36.500	-28.500	14.000	39.946	0.199	0.000	25.8	(C 90, G IMax)	/
MIC OPTOELECTRONIC CO.,LTD MFL-G720 720w 60degree beam angle	9	-36.500	28.500	14.000	-39.946	-0.199	0.000	25.8	(C 90, G IMax)	/
MIC OPTOELECTRONIC CO.,LTD MFL-G720 720w 60degree beam angle	10	36.500	28.500	14.000	39.946	-0.199	0.000	25.8	(C 90, G IMax)	/
MIC OPTOELECTRONIC CO.,LTD MFL-G720 720w 60degree beam angle	11	-35.500	-28.500	14.000	-21.753	-14.482	0.000	35.5	(C 90, G IMax)	/
MIC OPTOELECTRONIC CO.,LTD MFL-G720 720w 60degree beam angle	12	35.500	-28.500	14.000	21.753	-14.482	0.000	35.5	(C 90, G IMax)	/
MIC OPTOELECTRONIC CO.,LTD MFL-G720 720w 60degree beam angle	13	-35.500	28.500	14.000	-21.753	14.482	0.000	35.5	(C 90, G IMax)	/
MIC OPTOELECTRONIC CO.,LTD MFL-G720 720w 60degree beam angle	14	35.500	28.500	14.000	21.753	14.482	0.000	35.5	(C 90, G IMax)	/
MIC OPTOELECTRONIC CO.,LTD MFL-G720 720w 60degree beam angle	15	1.000	-28.500	14.000	23.097	-6.264	0.000	24.1	(C 90, G IMax)	/
MIC OPTOELECTRONIC CO.,LTD MFL-G720 720w 60degree beam angle	16	1.000	28.500	14.000	23.097	6.264	0.000	24.1	(C 90, G IMax)	/
MIC OPTOELECTRONIC CO.,LTD MFL-G720 720w 60degree beam angle	17	-1.000	-28.500	14.000	-20.859	-6.293	0.000	25.2	(C 90, G IMax)	/
MIC OPTOELECTRONIC CO.,LTD MFL-G720 720w 60degree beam angle	18	-1.000	28.500	14.000	-20.859	6.293	0.000	25.2	(C 90, G IMax)	/



Operator  
Telephone  
Fax  
e-Mail

**Exterior Scene 1 / 3D Rendering**

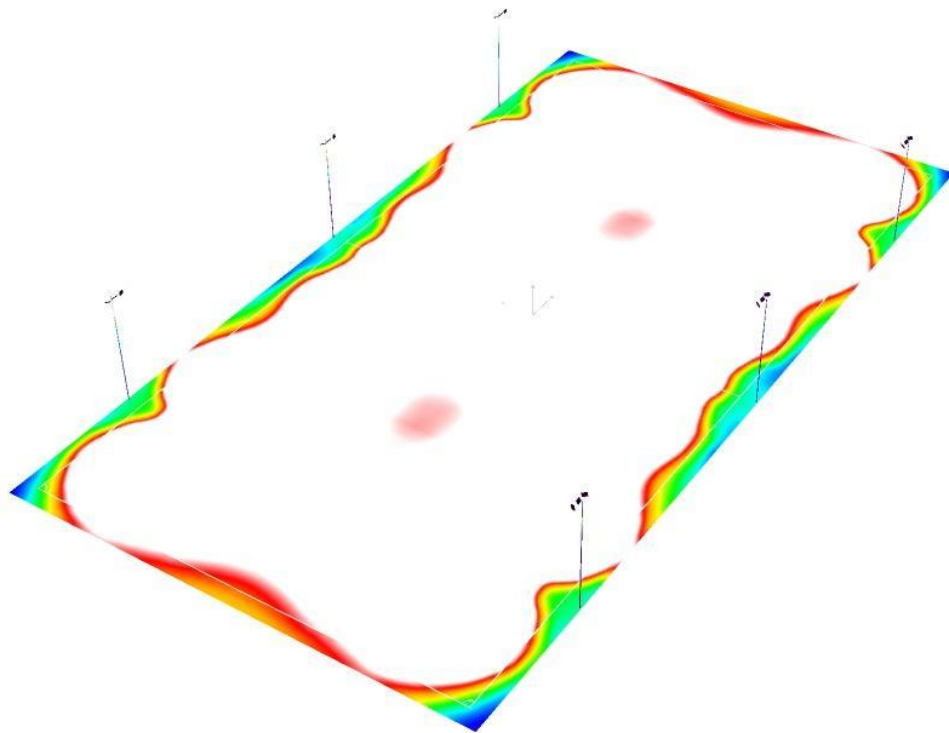






Operator  
Telephone  
Fax  
e-Mail

## Exterior Scene 1 / False Color Rendering



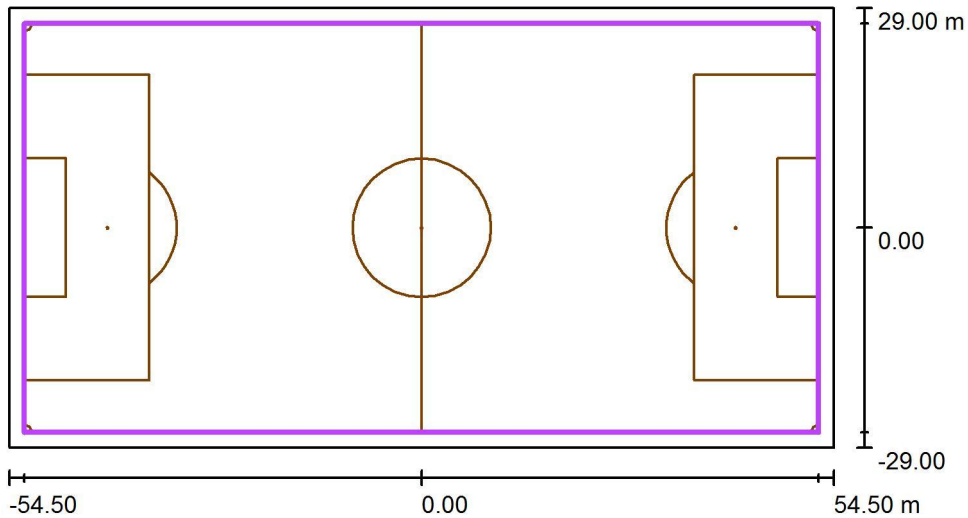
0    18.75    37.50    56.25    75    93.75    112.50    131.25    150

lx



Operator  
Telephone  
Fax  
e-Mail

**Exterior Scene 1 / Soccer Field 1 Calculation Grid (PA) / Summary**



Scale 1 : 1000

Position: (0.000 m, 0.000 m, 0.000 m)  
 Size: (105.000 m, 54.000 m)  
 Rotation: (0.0°, 0.0°, 0.0°)  
 Type: Normal, Grid: 21 x 11 Points  
 Belongs to the following sport arena: Soccer Field 1

**Results overview**

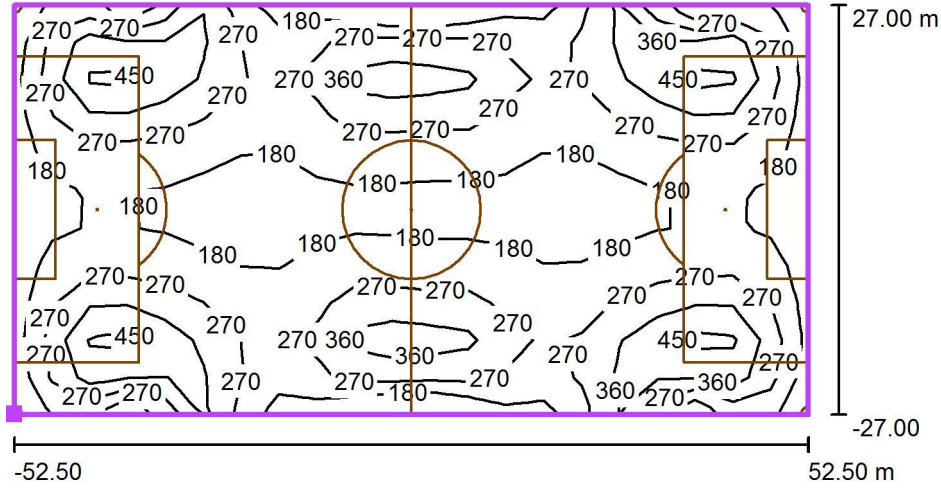
No.	Type	$E_{av}$ [lx]	$E_{min}$ [lx]	$E_{max}$ [lx]	u0	$E_{min} / E_{max}$	$E_{h\ m} / E_m$	H [m]	Camera
1	perpendicular	262	144	593	0.55	0.24	/	0.000	/

$E_{h\ m} / E_m$  = Relationship between middle horizontal and vertical illuminance, H = Measuring Height



Operator  
Telephone  
Fax  
e-Mail

**Exterior Scene 1 / Soccer Field 1 Calculation Grid (PA) / Isolines (E, Perpendicular)**



Values in Lux, Scale 1 : 1000

Position of surface in external scene:  
Marked point: (-52.500 m, -27.000 m, 0.000 m)



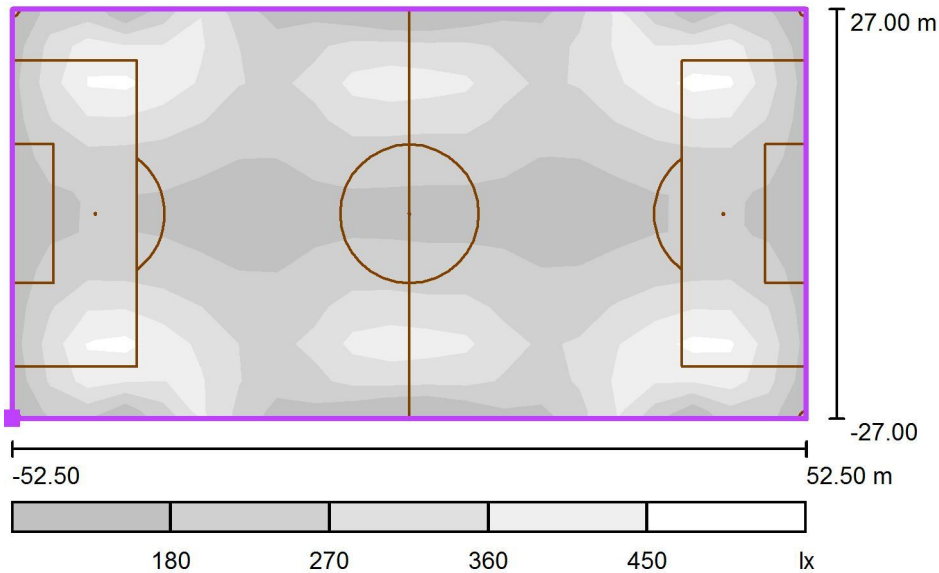
Grid: 21 x 11 Points

$E_{av}$ [lx]	$E_{min}$ [lx]	$E_{max}$ [lx]	$u_0$	$E_{min} / E_{max}$
262	144	593	0.55	0.24



Operator  
Telephone  
Fax  
e-Mail

**Exterior Scene 1 / Soccer Field 1 Calculation Grid (PA) / Greyscale (E, Perpendicular)**



Scale 1 : 1000

Position of surface in external scene:  
Marked point: (-52.500 m, -27.000 m, 0.000 m)



Grid: 21 x 11 Points

$E_{av}$  [lx]  
262

$E_{min}$  [lx]  
144

$E_{max}$  [lx]  
593

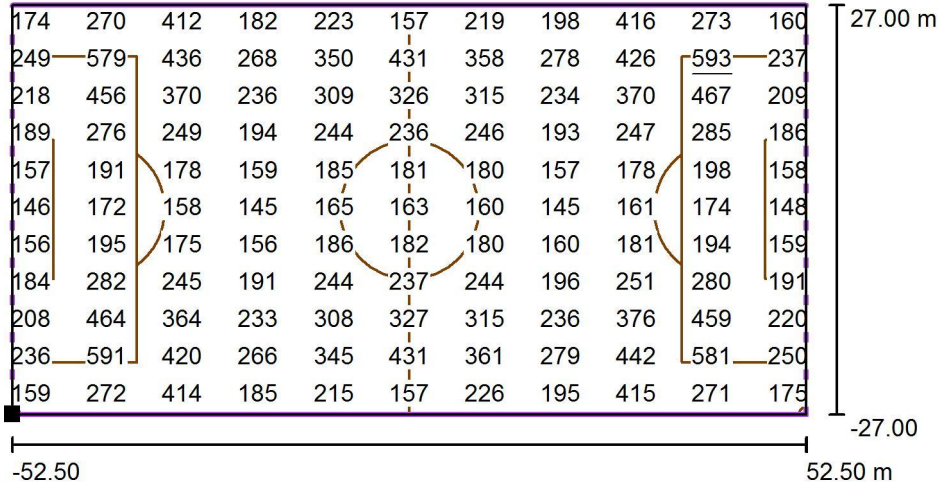
u0  
0.55

$E_{min} / E_{max}$   
0.24



Operator  
Telephone  
Fax  
e-Mail

**Exterior Scene 1 / Soccer Field 1 Calculation Grid (PA) / Value Chart (E, Perpendicular)**



Values in Lux, Scale 1 : 1000

Not all calculated values could be displayed.

Position of surface in external scene:  
Marked point: (-52.500 m, -27.000 m, 0.000 m)



Grid: 21 x 11 Points

$E_{av}$  [lx]  
262

$E_{min}$  [lx]  
144

$E_{max}$  [lx]  
593

$u_0$   
0.55

$E_{min} / E_{max}$   
0.24