

Project 1

Partner for Contact:
Order No.:
Company:
Customer No.:

Date: 19.06.2019
Operator:

Operator
Telephone
Fax
e-Mail

Table of contents

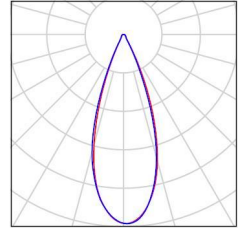
Project 1	
Project Cover	1
Table of contents	2
Luminaire parts list	3
Exterior Scene 1	
Planning data	4
Luminaire parts list	5
Sport Luminaires (Coordinates List)	6
3D Rendering	8
False Color Rendering	9
Exterior Surfaces	
Soccer Field 1 Calculation Grid (PA)	
Summary	10
Isolines (E, Perpendicular)	11
Greyscale (E, Perpendicular)	12
Value Chart (E, Perpendicular)	13

Operator
Telephone
Fax
e-Mail

Project 1 / Luminaire parts list

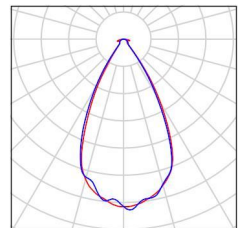
12 Pieces MIC OPTOELECTRONIC CO.,LTD MFL-G480
Article No.: MFL-G480
Luminous flux (Luminaire): 75611 lm
Luminous flux (Lamps): 75622 lm
Luminaire Wattage: 479.2 W
Luminaire classification according to DIN: A30
CIE flux code: 90 95 99 100 100
Fitting: 1 x 5050 (Correction Factor 1.000).

See our luminaire catalog for an image of the luminaire.



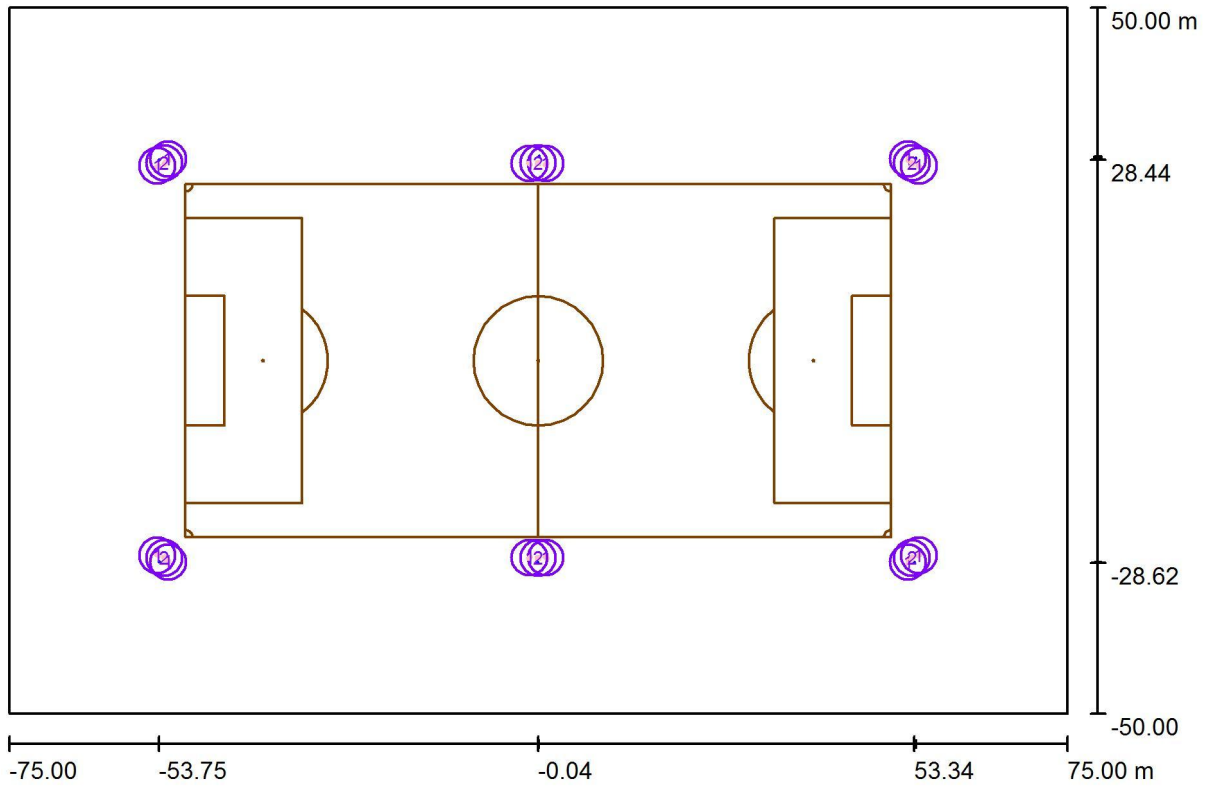
6 Pieces MIC OPTOELECTRONIC CO.,LTD MFL-G480-60degree
Article No.: MFL-G480-60degree
Luminous flux (Luminaire): 70423 lm
Luminous flux (Lamps): 70425 lm
Luminaire Wattage: 477.7 W
Luminaire classification according to DIN: A10
CIE flux code: 87 92 97 100 100
Fitting: 1 x PHILIPS3030 (Correction Factor 1.000).

See our luminaire catalog for an image of the luminaire.



Operator
 Telephone
 Fax
 e-Mail

Exterior Scene 1 / Planning data



Light loss factor: 0.90, ULR (Upward Light Ratio): 5.0%

Scale 1:1073

Luminaire Parts List

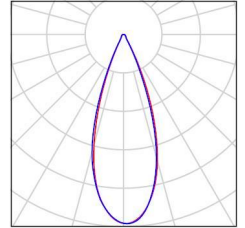
No.	Pieces	Designation (Correction Factor)	Φ (Luminaire) [lm]	Φ (Lamps) [lm]	P [W]
1	12	MIC OPTOELECTRONIC CO.,LTD MFL-G480 (1.000)	75611	75622	479.2
2	6	MIC OPTOELECTRONIC CO.,LTD MFL-G480-60degree (1.000)	70423	70425	477.7
Total:			1329864	Total: 1330014	8616.8

Operator
Telephone
Fax
e-Mail

Exterior Scene 1 / Luminaire parts list

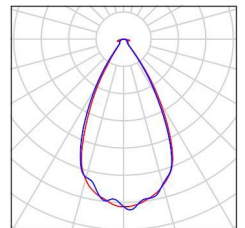
12 Pieces MIC OPTOELECTRONIC CO.,LTD MFL-G480
Article No.: MFL-G480
Luminous flux (Luminaire): 75611 lm
Luminous flux (Lamps): 75622 lm
Luminaire Wattage: 479.2 W
Luminaire classification according to DIN: A30
CIE flux code: 90 95 99 100 100
Fitting: 1 x 5050 (Correction Factor 1.000).

See our luminaire catalog for an image of the luminaire.



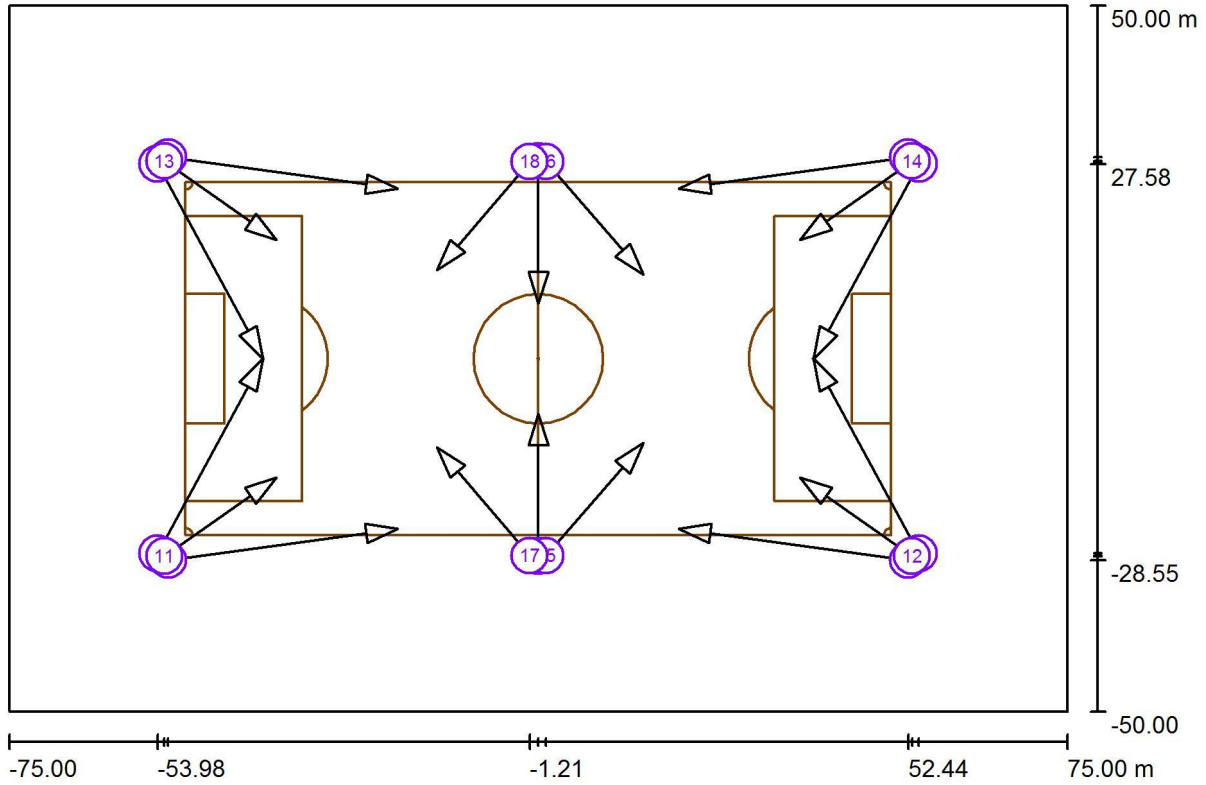
6 Pieces MIC OPTOELECTRONIC CO.,LTD MFL-G480-60degree
Article No.: MFL-G480-60degree
Luminous flux (Luminaire): 70423 lm
Luminous flux (Lamps): 70425 lm
Luminaire Wattage: 477.7 W
Luminaire classification according to DIN: A10
CIE flux code: 87 92 97 100 100
Fitting: 1 x PHILIPS3030 (Correction Factor 1.000).

See our luminaire catalog for an image of the luminaire.



Operator
Telephone
Fax
e-Mail

Exterior Scene 1 / Sport Luminaires (Coordinates List)



Scale 1 : 1073

List of the Sport Luminaires

Luminaire	Index	Position [m]			Aiming Point [m]			Angle [°]	Alignment	Pole
		X	Y	Z	X	Y	Z			
MIC OPTOELECTRONIC CO.,LTD MFL-G480	1	-53.985	-27.575	15.000	-39.000	0.000	0.000	25.5	(C 90, G IMax)	/
MIC OPTOELECTRONIC CO.,LTD MFL-G480	2	53.985	-27.575	15.000	39.000	0.000	0.000	25.5	(C 90, G IMax)	/
MIC OPTOELECTRONIC CO.,LTD MFL-G480	3	-53.985	27.575	15.000	-39.000	0.000	0.000	25.5	(C 90, G IMax)	/
MIC OPTOELECTRONIC CO.,LTD MFL-G480	4	53.985	27.575	15.000	39.000	0.000	0.000	25.5	(C 90, G IMax)	/

Operator
Telephone
Fax
e-Mail

Exterior Scene 1 / Sport Luminaires (Coordinates List)

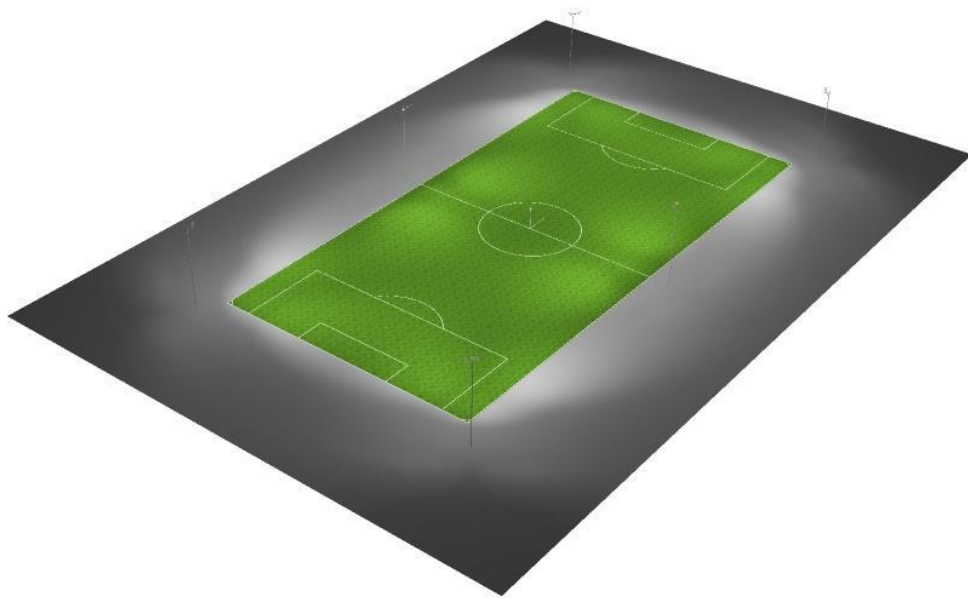
List of the Sport Luminaires

Luminaire	Index	Position [m]			Aiming Point [m]			Angle [°]	Alignment	Pole
		X	Y	Z	X	Y	Z			
MIC OPTOELECTRONIC CO.,LTD MFL-G480-60degree	5	0.000	-28.000	15.000	0.033	-7.782	0.000	36.6	(C 90, G IMax)	/
MIC OPTOELECTRONIC CO.,LTD MFL-G480-60degree	6	0.000	28.000	15.000	0.033	7.782	0.000	36.6	(C 90, G IMax)	/
MIC OPTOELECTRONIC CO.,LTD MFL-G480	7	-52.441	-28.545	15.000	-19.880	-24.102	0.000	24.5	(C 90, G IMax)	/
MIC OPTOELECTRONIC CO.,LTD MFL-G480	8	52.441	-28.545	15.000	19.880	-24.102	0.000	24.5	(C 90, G IMax)	/
MIC OPTOELECTRONIC CO.,LTD MFL-G480	9	-52.441	28.545	15.000	-19.880	24.102	0.000	24.5	(C 90, G IMax)	/
MIC OPTOELECTRONIC CO.,LTD MFL-G480	10	52.441	28.545	15.000	19.880	24.102	0.000	24.5	(C 90, G IMax)	/
MIC OPTOELECTRONIC CO.,LTD MFL-G480-60degree	11	-53.000	-28.000	15.000	-37.137	-16.840	0.000	37.7	(C 90, G IMax)	/
MIC OPTOELECTRONIC CO.,LTD MFL-G480-60degree	12	53.000	-28.000	15.000	37.137	-16.840	0.000	37.7	(C 90, G IMax)	/
MIC OPTOELECTRONIC CO.,LTD MFL-G480-60degree	13	-53.000	28.000	15.000	-37.137	16.840	0.000	37.7	(C 90, G IMax)	/
MIC OPTOELECTRONIC CO.,LTD MFL-G480-60degree	14	53.000	28.000	15.000	37.137	16.840	0.000	37.7	(C 90, G IMax)	/
MIC OPTOELECTRONIC CO.,LTD MFL-G480	15	1.076	-27.909	15.000	14.948	-11.920	0.000	35.3	(C 90, G IMax)	/
MIC OPTOELECTRONIC CO.,LTD MFL-G480	16	1.076	27.909	15.000	14.948	11.920	0.000	35.3	(C 90, G IMax)	/
MIC OPTOELECTRONIC CO.,LTD MFL-G480	17	-1.206	-27.909	15.000	-14.335	-12.545	0.000	36.6	(C 90, G IMax)	/
MIC OPTOELECTRONIC CO.,LTD MFL-G480	18	-1.206	27.909	15.000	-14.335	12.545	0.000	36.6	(C 90, G IMax)	/



Operator
Telephone
Fax
e-Mail

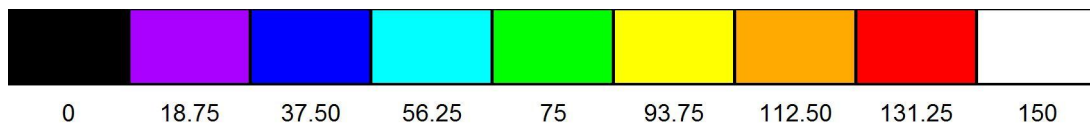
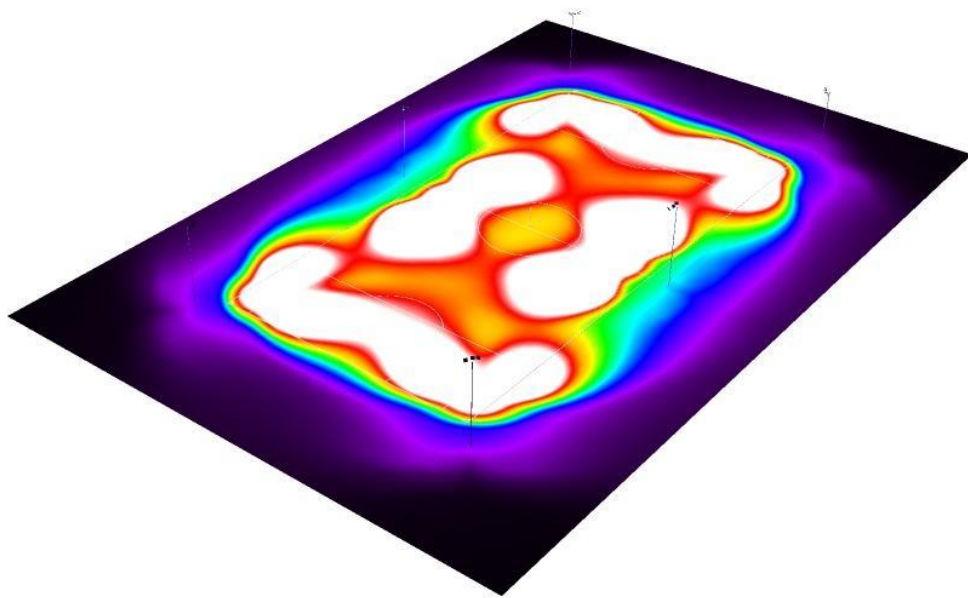
Exterior Scene 1 / 3D Rendering





Operator
Telephone
Fax
e-Mail

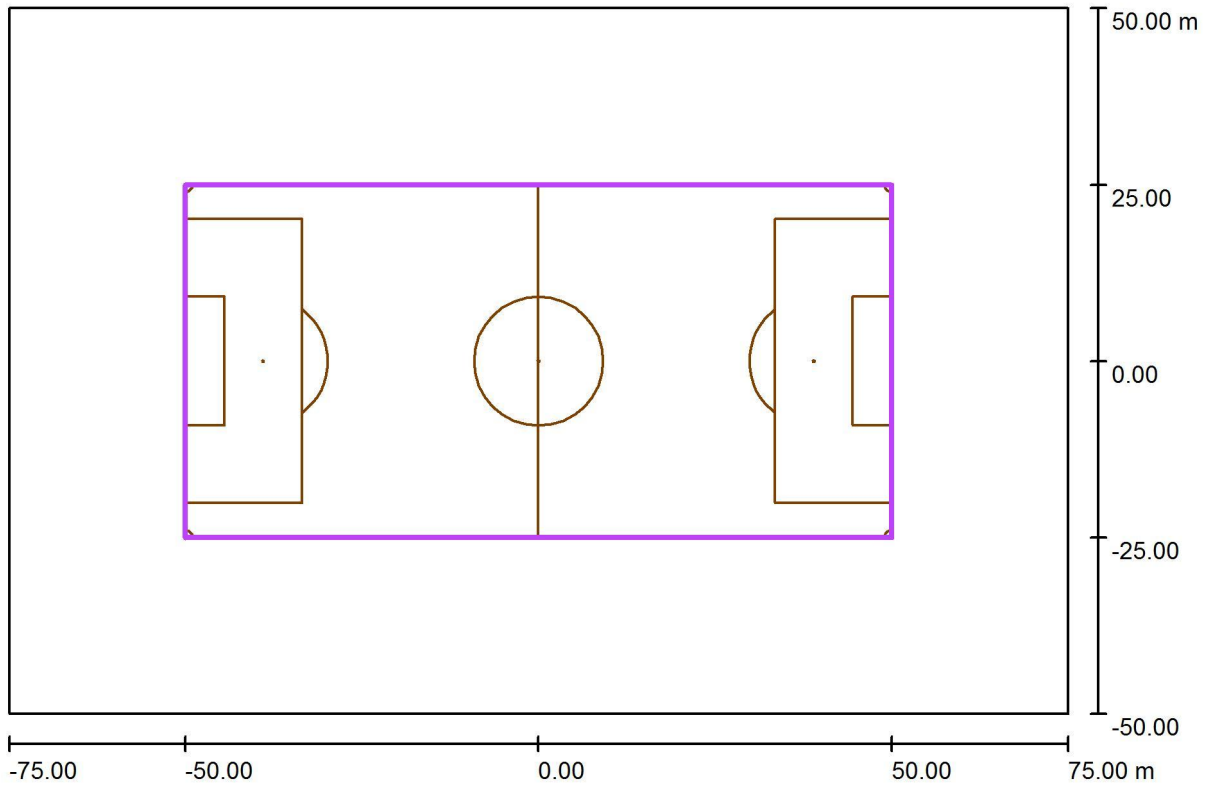
Exterior Scene 1 / False Color Rendering



lx

Operator
 Telephone
 Fax
 e-Mail

Exterior Scene 1 / Soccer Field 1 Calculation Grid (PA) / Summary



Scale 1 : 1073

Position: (0.000 m, 0.000 m, 0.000 m)
 Size: (100.000 m, 50.000 m)
 Rotation: (0.0°, 0.0°, 0.0°)
 Type: Normal, Grid: 19 x 9 Points
 Belongs to the following sport arena: Soccer Field 1

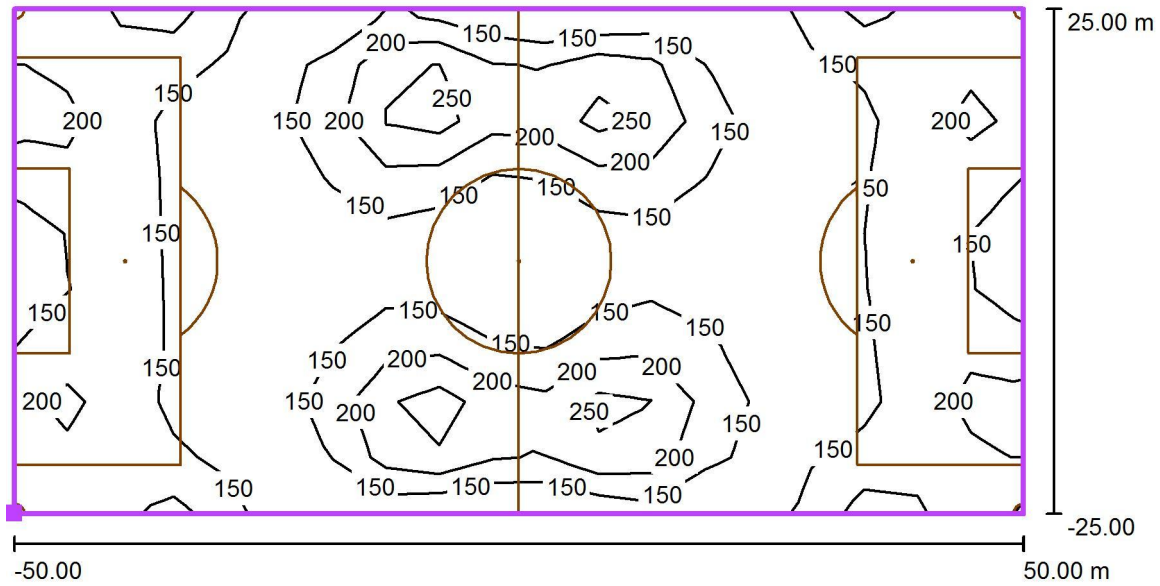
Results overview

No.	Type	E_{av} [lx]	E_{min} [lx]	E_{max} [lx]	u0	E_{min} / E_{max}	$E_{h\ m} / E_m$	H [m]	Camera
1	perpendicular	166	101	335	0.61	0.30	/	0.000	/

$E_{h\ m} / E_m$ = Relationship between middle horizontal and vertical illuminance, H = Measuring Height

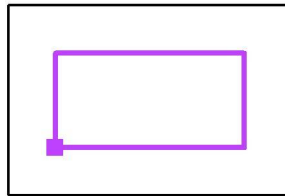
Operator
 Telephone
 Fax
 e-Mail

Exterior Scene 1 / Soccer Field 1 Calculation Grid (PA) / Isolines (E, Perpendicular)



Values in Lux, Scale 1 : 750

Position of surface in external scene:
 Marked point: (-50.000 m, -25.000 m, 0.000 m)

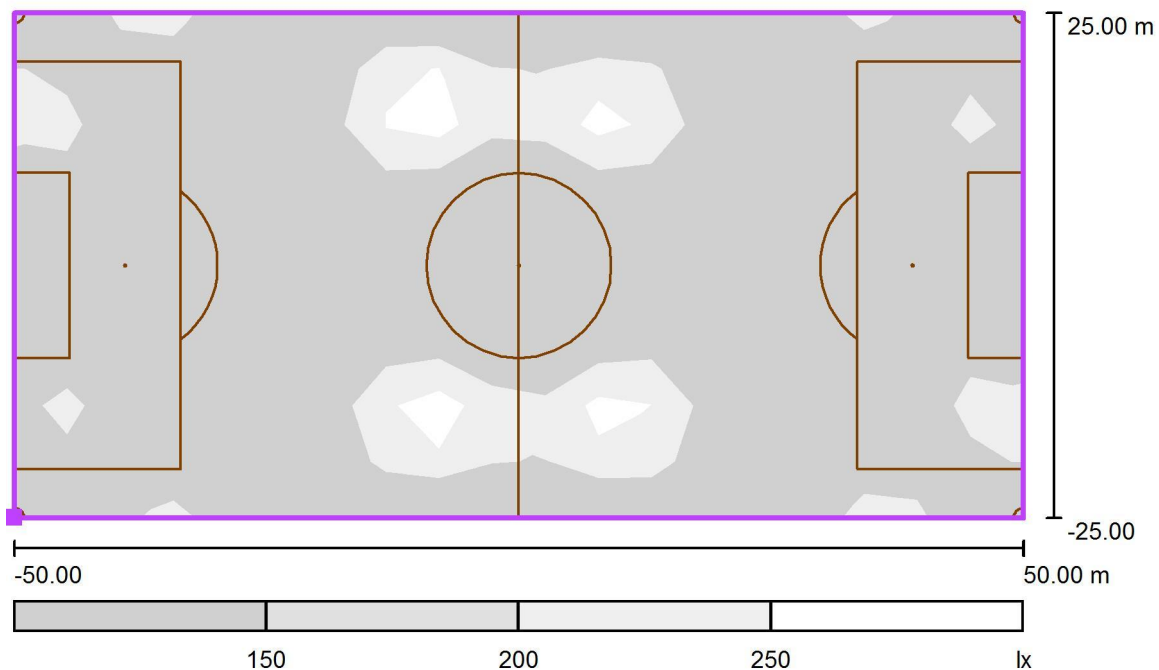


Grid: 19 x 9 Points

E_{av} [lx]	E_{min} [lx]	E_{max} [lx]	u_0	E_{min} / E_{max}
166	101	335	0.61	0.30

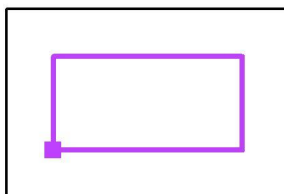
Operator
 Telephone
 Fax
 e-Mail

Exterior Scene 1 / Soccer Field 1 Calculation Grid (PA) / Greyscale (E, Perpendicular)



Scale 1 : 750

Position of surface in external scene:
 Marked point: (-50.000 m, -25.000 m, 0.000 m)

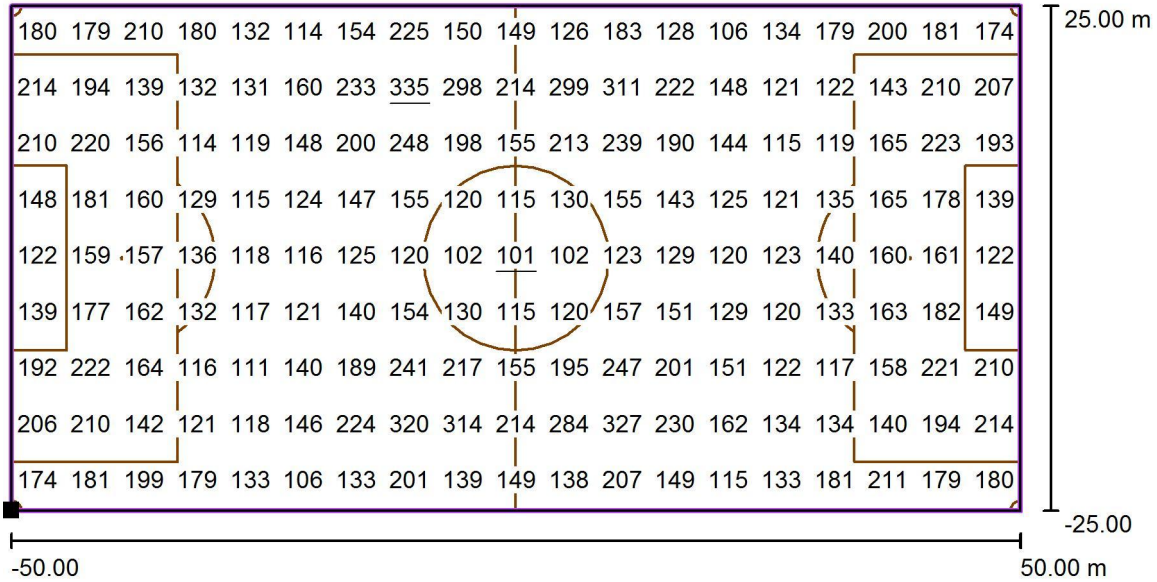


Grid: 19 x 9 Points

E_{av} [lx]	E_{min} [lx]	E_{max} [lx]	u0	E_{min} / E_{max}
166	101	335	0.61	0.30

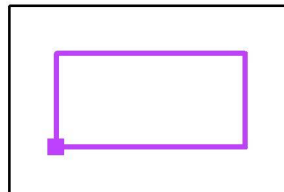
Operator
 Telephone
 Fax
 e-Mail

Exterior Scene 1 / Soccer Field 1 Calculation Grid (PA) / Value Chart (E, Perpendicular)



Values in Lux, Scale 1 : 750

Position of surface in external scene:
 Marked point: (-50.000 m, -25.000 m, 0.000 m)



Grid: 19 x 9 Points

E_{av} [lx]	E_{min} [lx]	E_{max} [lx]	u_0	E_{min} / E_{max}
166	101	335	0.61	0.30